



Annex

4-Post Alignment Lift

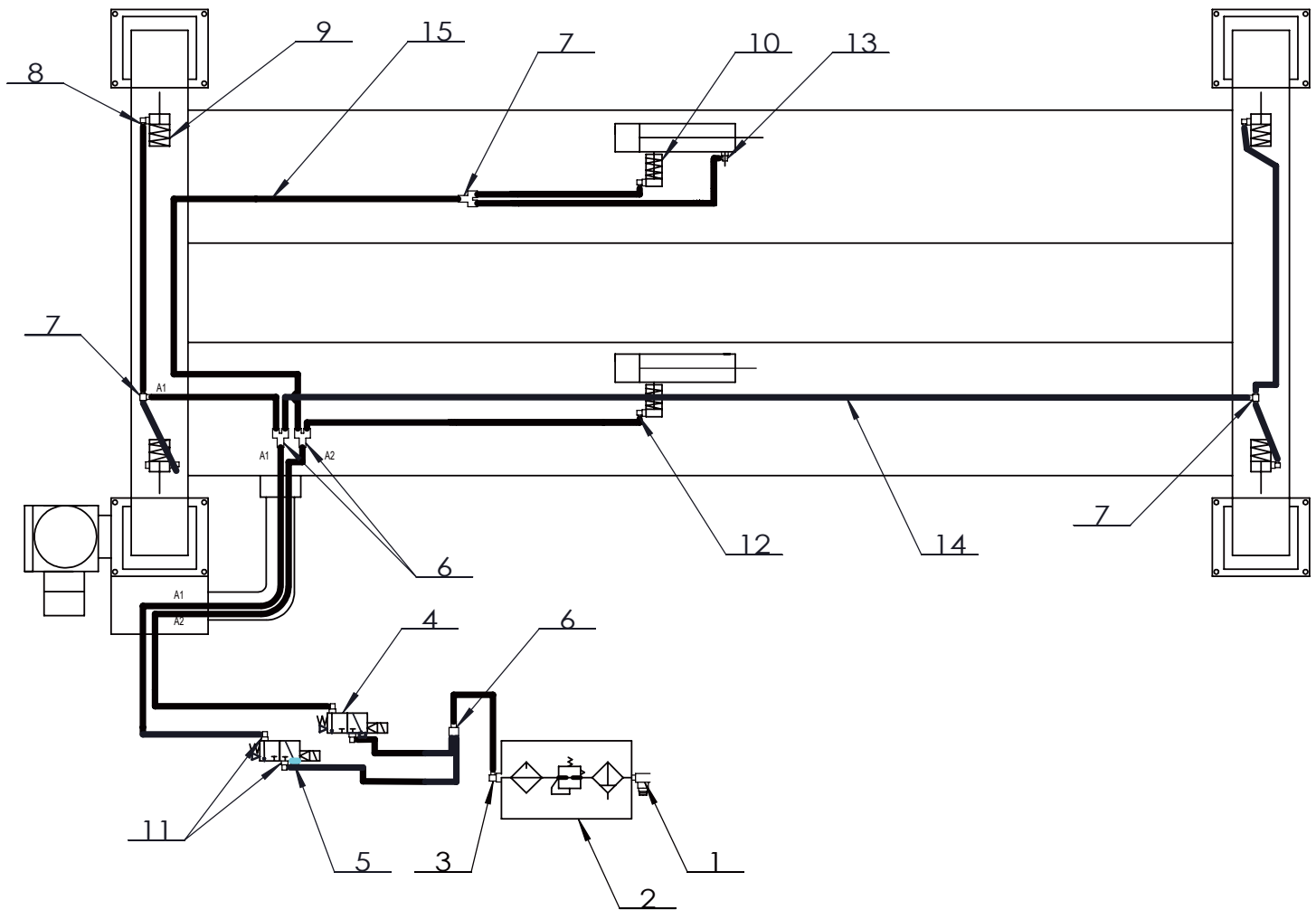
SM40,SM40NB,SM40LT

Table of Contents

Pneumatic circuit diagram.....	2
Electric wiring diagram	5
Hydraulic circuit diagram	8
Parts break down.....	12
Spare parts list	40

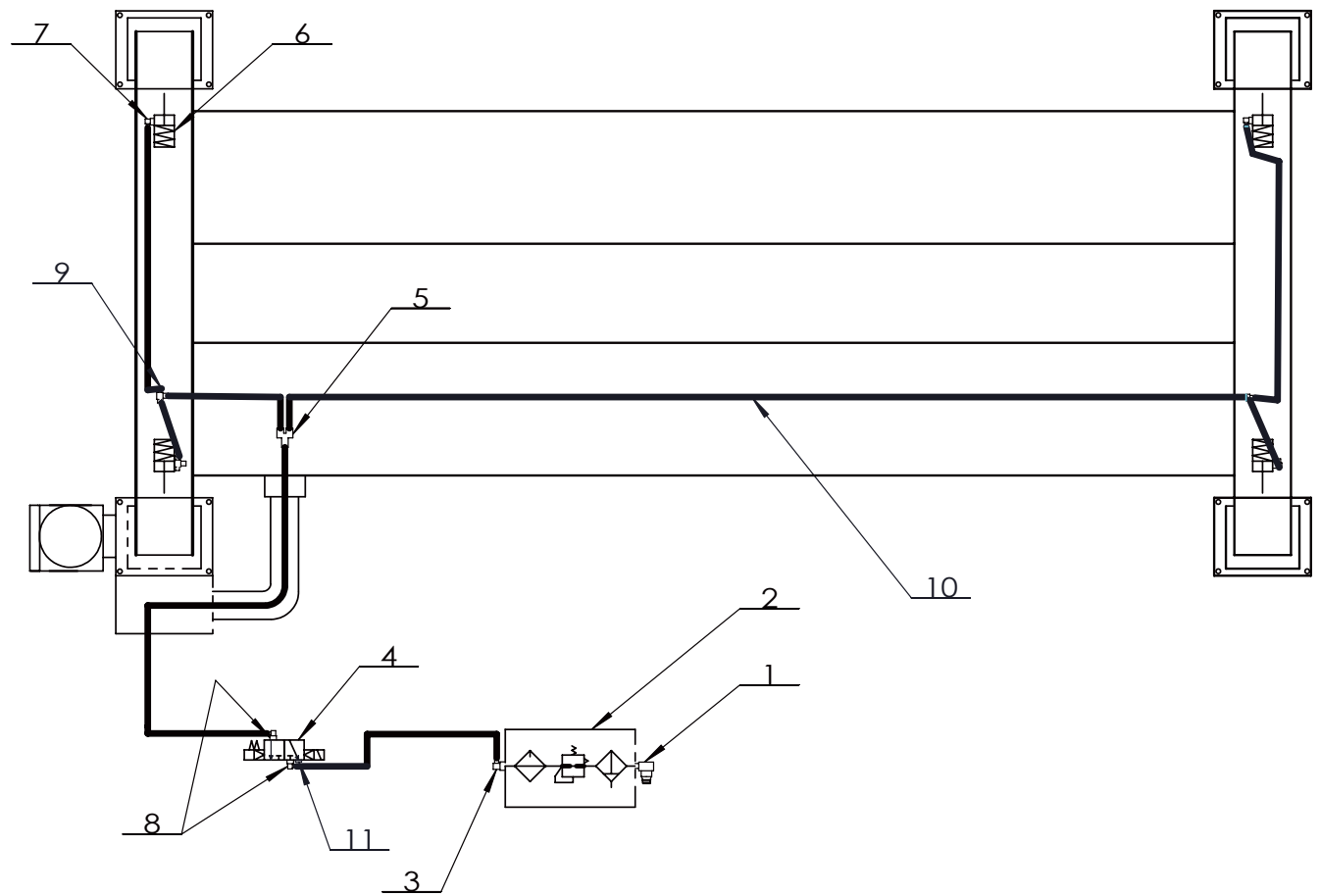
I. Pneumatic circuit diagram
For SM40-47/51,SM40NB-47,SM40LT-47

1.The Pneumatic circuit diagram for SM40LT



Item	PartNo.	Description	Oty	Remark
1	EPL8-N02	Air fitting	1	
2	S130080	Air maintenance	1	
3	EPL6-N02	Air Fitting	1	
4	3V210-06AC24V	Exchange valve	2	
5	PSV-01	Silencer	2	
6	SPE-6	Air Fitting	3	
7	SPY-6	Air Fitting	3	
8	EPL6-N01	Fitting	4	
9	S130061	Air cylinder	4	
10	QG05-9100	Air cylinder	2	
11	SPL6-01	Air fitting	4	
12	SPL6-M5	Air fitting	2	
13	SPL6-02	Fitting	1	
14	SM40-9801-2	Air line (L=15000mm)	1	for one lift
15		Blue PU Air line (L=10000mm)	1	for one lift

2.The Pneumatic circuit diagram for SM40/SM40NB

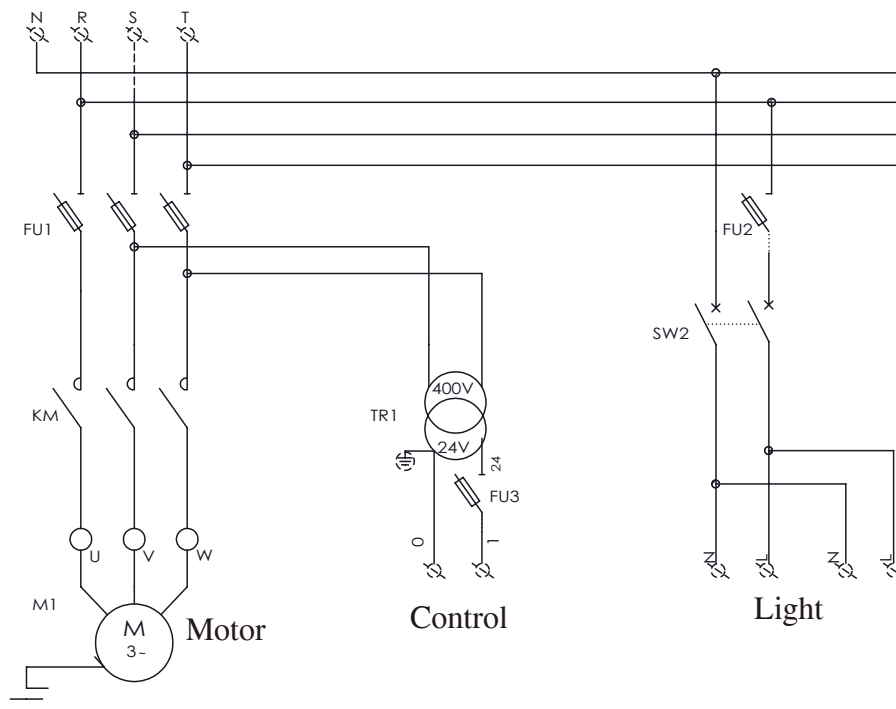


Item	PartNo.	Description	Oty	Remark
1	EPL8-N02	Air fitting	1	
2	S130080	Air maintenance	1	
3	EPL6-N02	Air Fitting	1	
4	3V210-06AC24V	Exchange valve	1	
5	SPE-6	Fitting	3	
6	S130061	Air cylinder	4	
7	EPL6-N01	Fitting	4	
8	SPL6-01	Air fitting	2	
9	SPY-6	Air fitting	2	
10	NSM40-9801-2	Air line($\phi 6$) L=15000	1	for one lift
11	PSV-01	Silencer	1	

II. Electric wiring diagram

For SM40-47/51, SM40NB-47, SM40LT-47

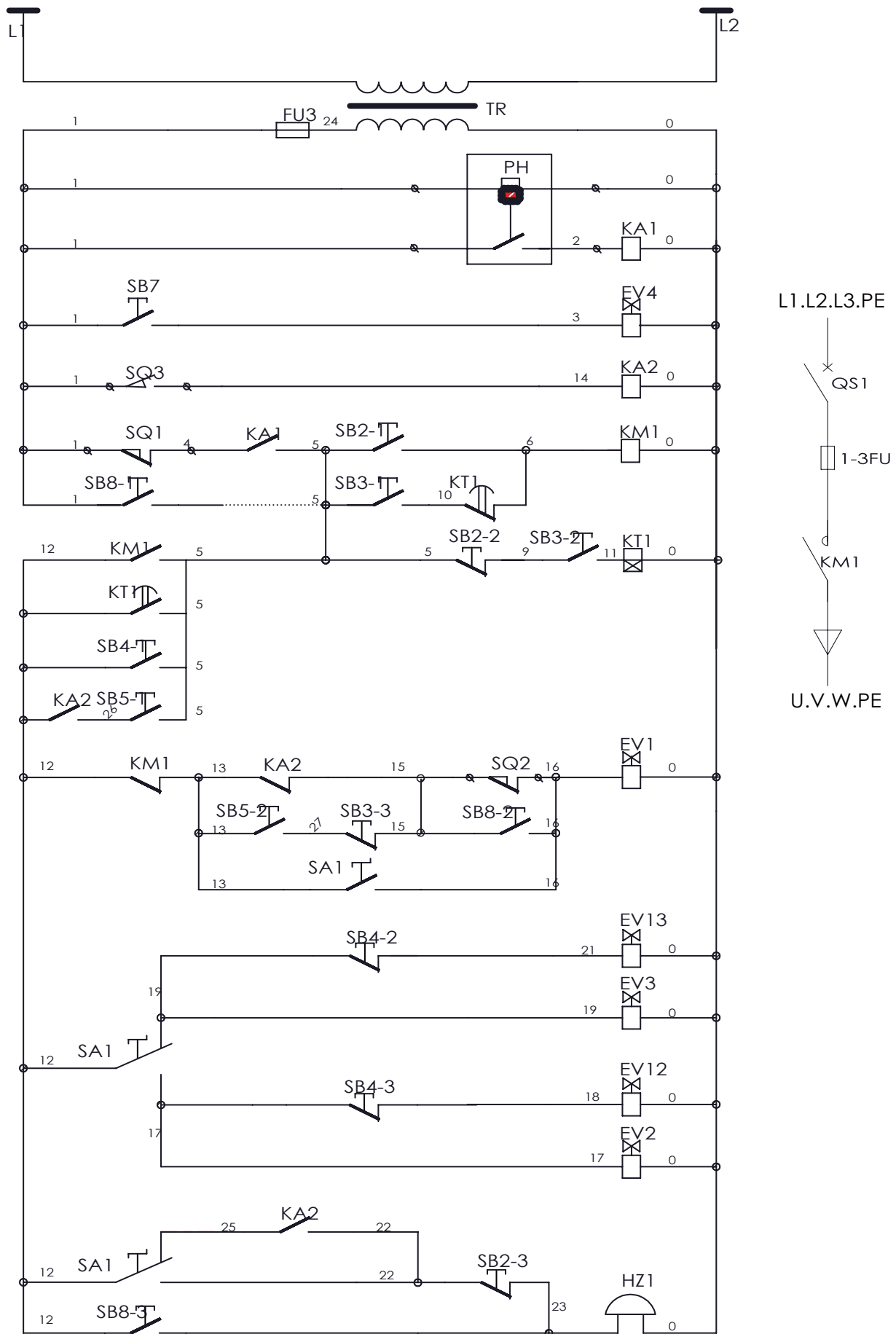
1. An Electric schematic diagram for SM40&SM40LT



2. Two Electric schematic diagram for SM40LT-47

Table for electrical components

SB7	Oil supplementary valve	FU1	Fuse 16A
SB2	Up button	FU2	Fuse 2A
SB3	Down button	FU3	Fuse 6A
SB4	Padlock button	KM1	Contactor
SB8	Emergency Button of help	QS1	Main switch
SB5	Final lowering button	SQ1	Broken cable switch
SA1	Selector switch aux/main	SQ2	Slack cable switch
KA1-KA3	Intermediate relay	SQ3	Low switch
KT1	Time relay	PH	Photoelectric switch
HZ1	Buzzer	EV1	Oil relief valve
EV2	Access valve /aux	EV12	Air valve /aux
EV3	Acess valve /main	EV13	Air valve/main



3. Two Electric schematic diagram for SM40/SM40NB

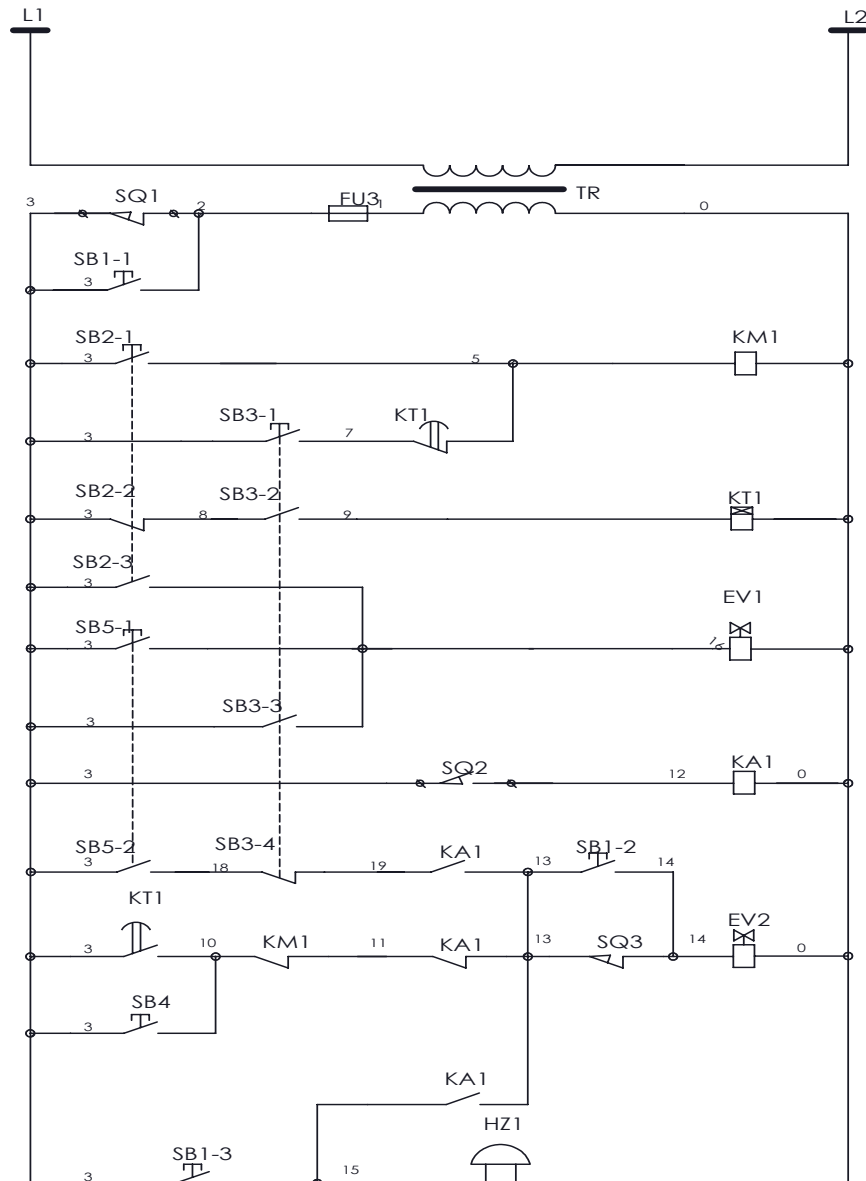


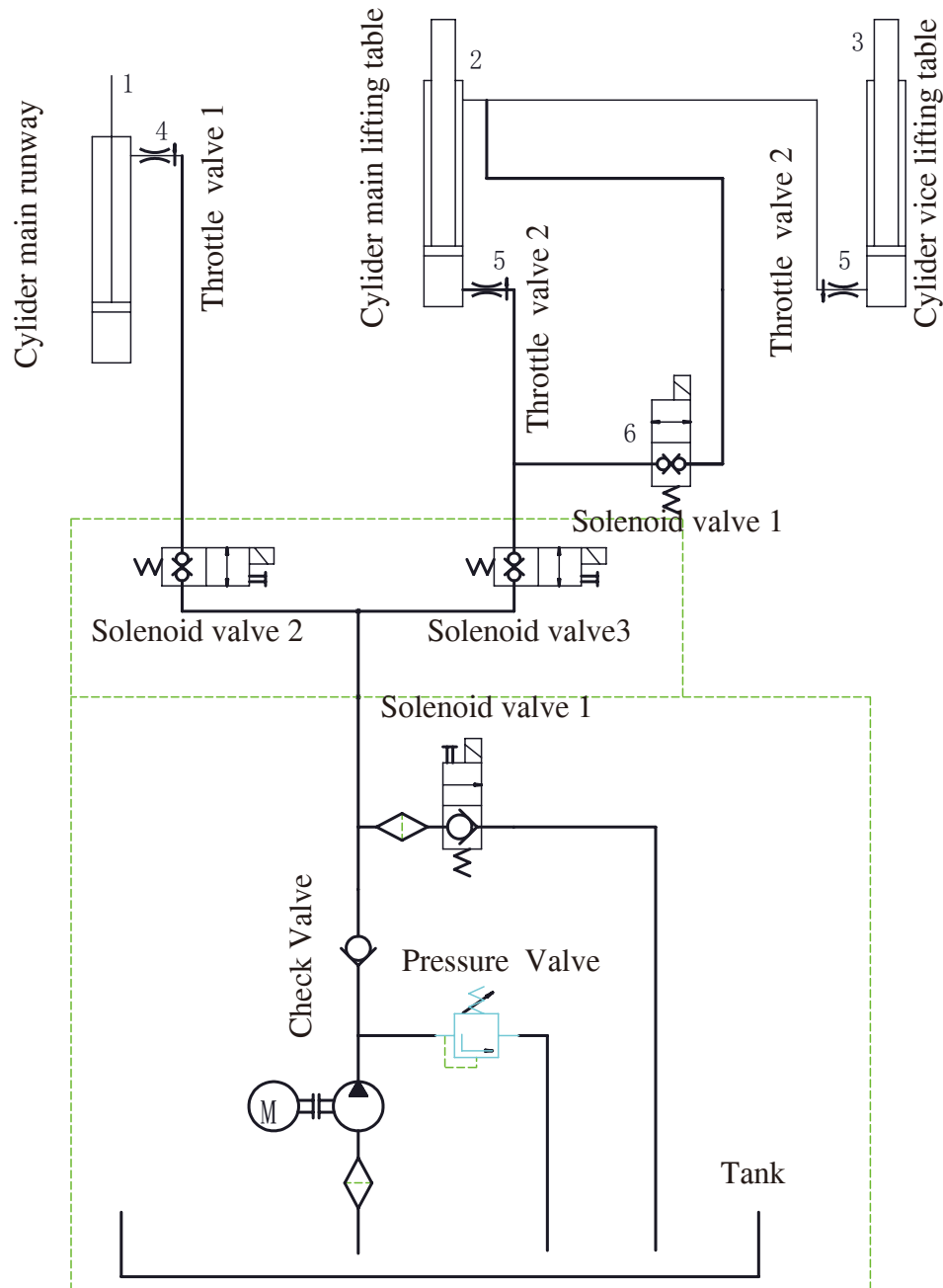
Table for electrical components

SB1	Emergency button for help	FU1	Fuse 16A
SB2	Up button	FU2	Fuse 2A
SB3	Down button	FU3	Fuse 6A
SB4	Padlock button	KM1	Contactor
SB5	Final lowering button	QS1	Main switch
HZ1	Buzzer	SQ1	Broken cable switch
KT1	Timer relay	SQ3	Slack cable switch
KA1	Intermediate relay	SQ2	Low switch

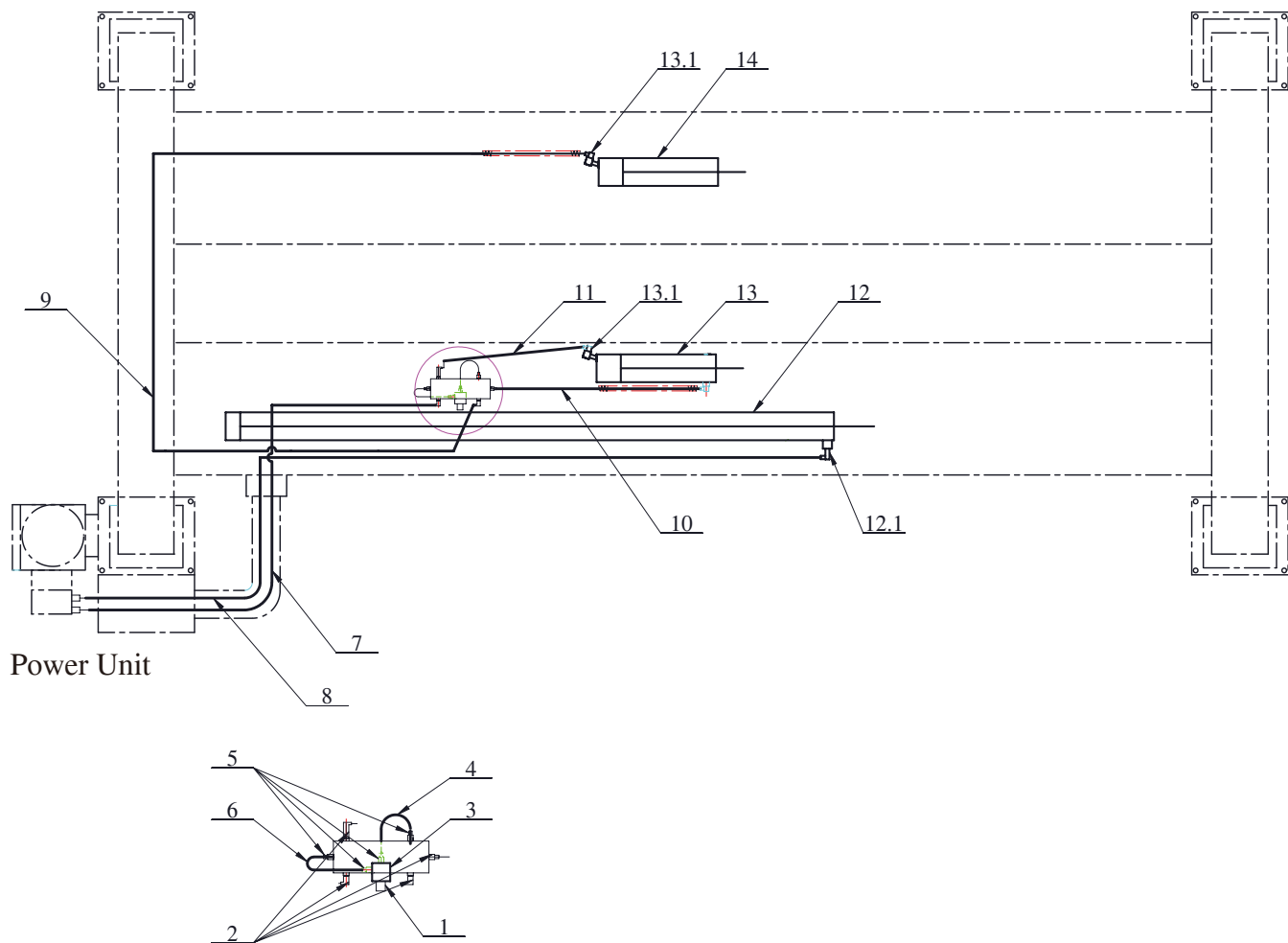
III. Hydraulic circuit diagram

For SM40-47/51,SM40NB-47,SM40LT-47

1. The Hydraulic circuit schema for SM40LT-47

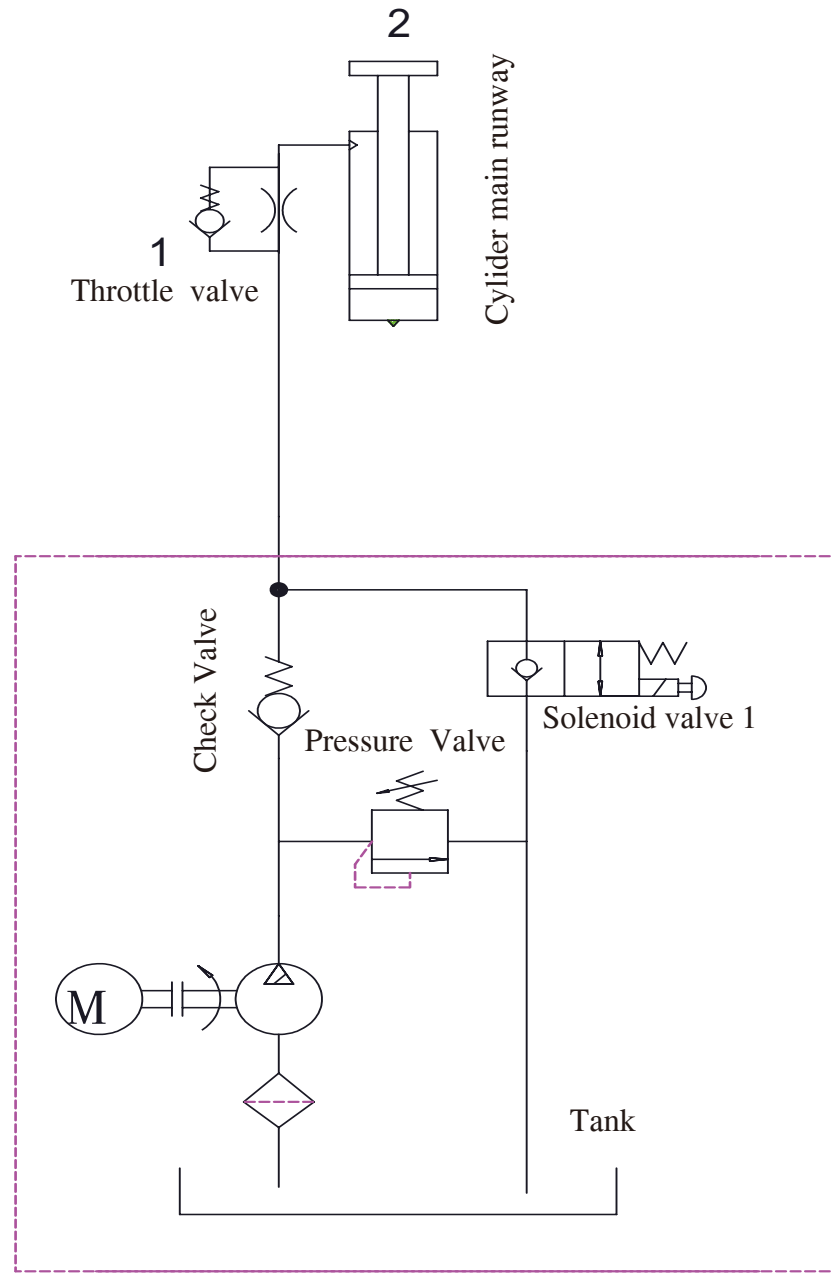


Item	PartNo.	Description	Qty	Remark
1	MOT40-9100	Cylinder for main runway	1	
2	YG39-9100	Cylinder for main lifting table	1	
3	YG40-9100	Cylinder for vice lifting table	1	
4	YG37-9200	Throttle valve	1	in the cylinder
5	YG39-9200	Throttle valve 2	2	in the cylinder
6	LSV-08-2NCSP-LM-2H	Solenoid valve 1	1	in the runway

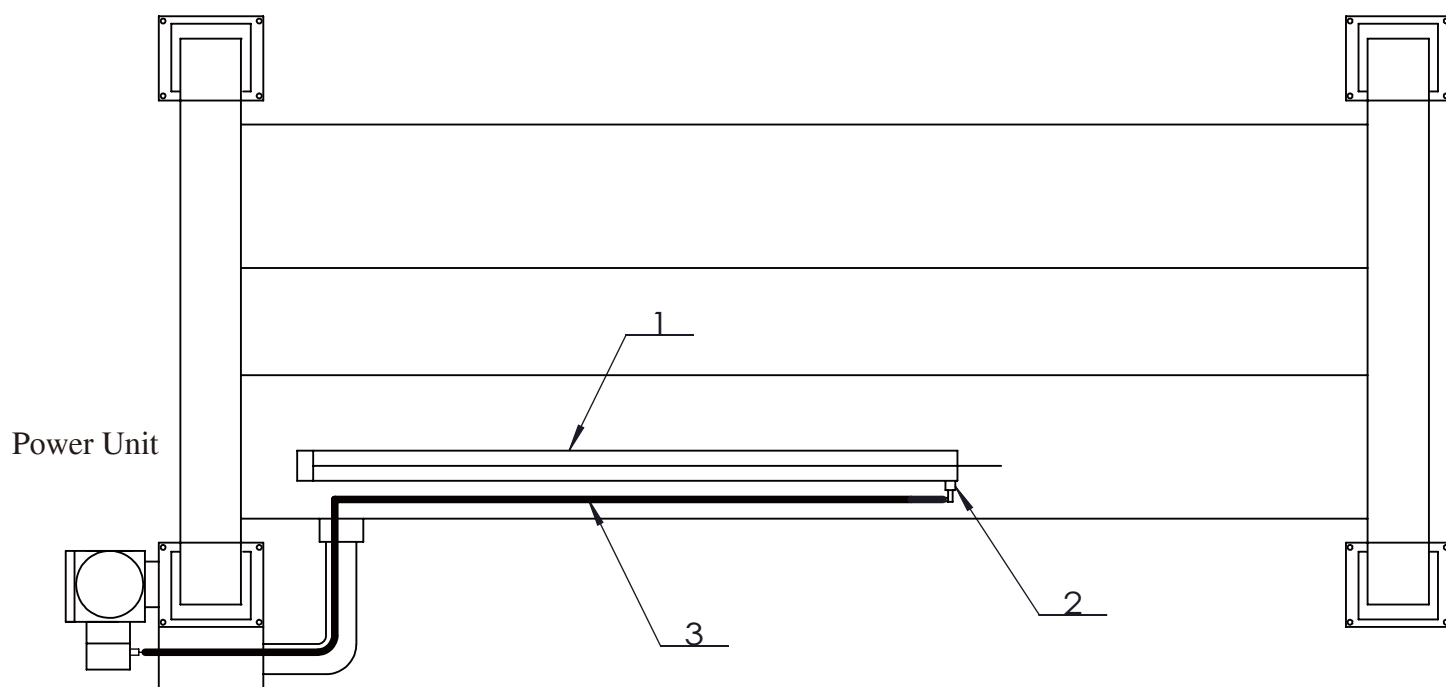


Item	PartNo.	Description	Oty	Remark
1	LSV-08-2NCSP-LM-2H	Solenoid valve	1	DC24V
2	WR-001	Fitting	4	
3	PV4-9102	Valve block	1	
4	PV4-9104	Steel hose	1	
5	E10	Fitting	4	
6	PV4-9103	Steel hose	1	
7	NSM40LT-9801-1	Hose (3550mm)to lifting table	1	
8	2WB-34	Hose (5020mm) to main lift	1	
9	SM40LT-9801-5	Hose (3636mm)	1	
10	SM40LT-9801-6	Hose (1116mm)	1	
11	SM40LT-9802-7	Hose (896mm)	1	
12	MOT40-9100	Main cylinder	1	
12.1	YG37-9200	Throttle valve	1	come with cylinder
13	YG39-9100	Main cylinder of lifting table	1	
14	YG40-9100	Vice cylinder og lifting table	1	
13.1	YG39-9200	Throttle valve	2	come with cylinder

2. The Hydraulic circuit schema for SM40/SM40NB

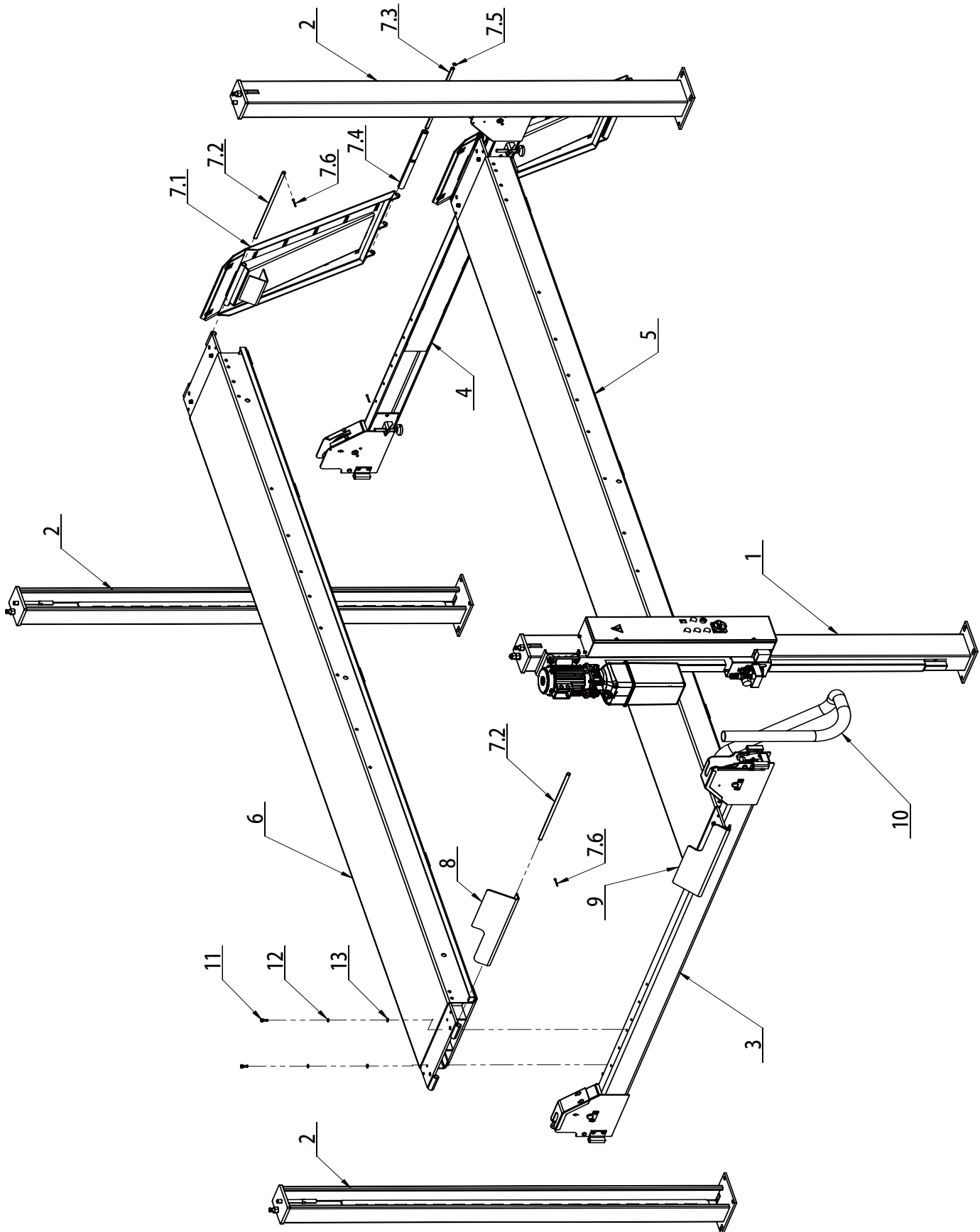


Item	PartNo.	Description	Qty	Remark
1	YG37-9200	Throttle valve	1	come with cylinder
2	MOT40-9100	Cylinder	1	



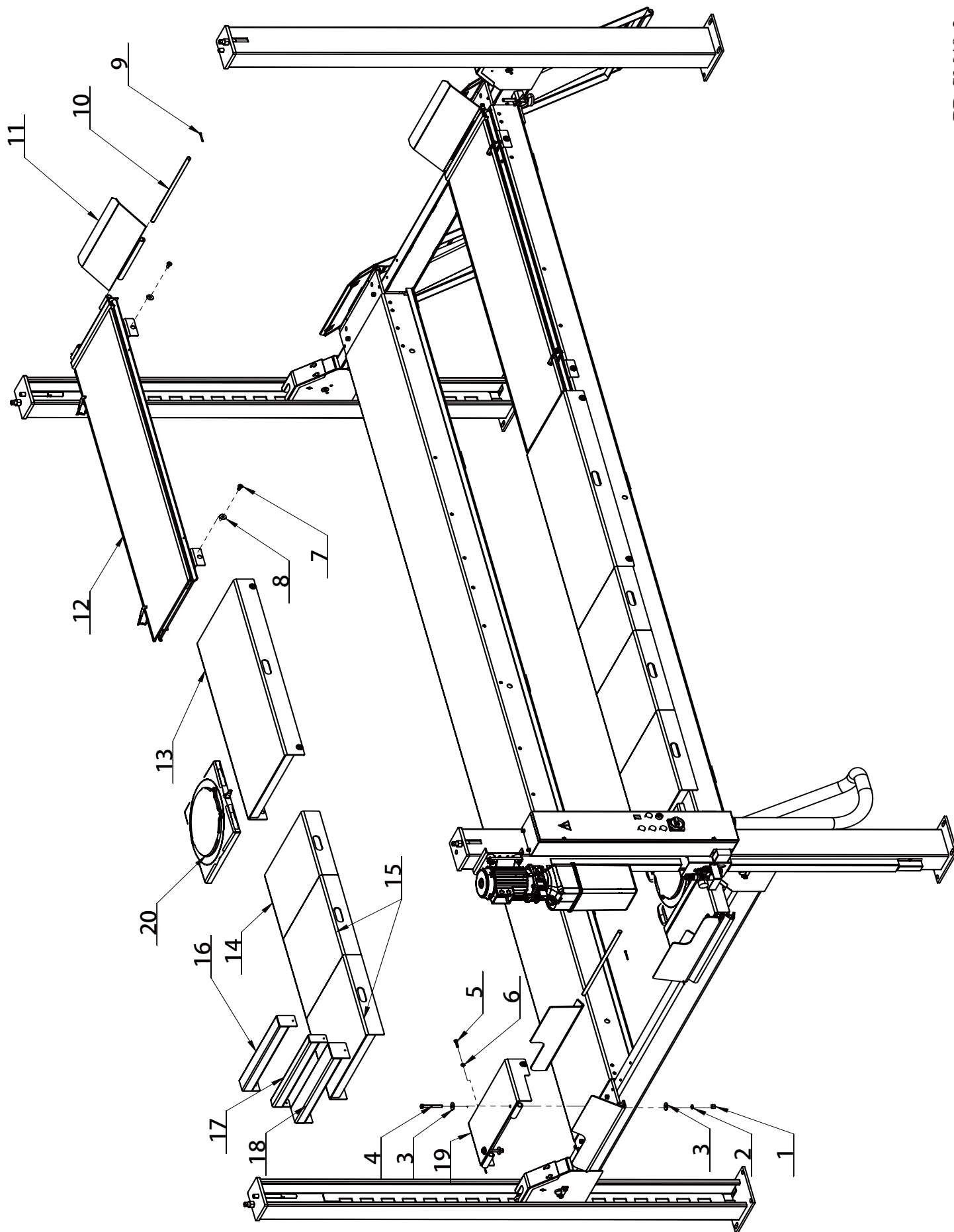
Item	PartNo.	Description	Oty	Remark
1	MOT40-9100	Cylinder	1	
2	YG37-9200	Throttle valve	1	come with cylinder
3	2WB-34	Hose	1	for SM40-47/SM40NB-47
	MOT40-9801-1	Hose	1	for SM40-51

Annex IV. Parts Break Down For SM40,SM40NB,SM40LT

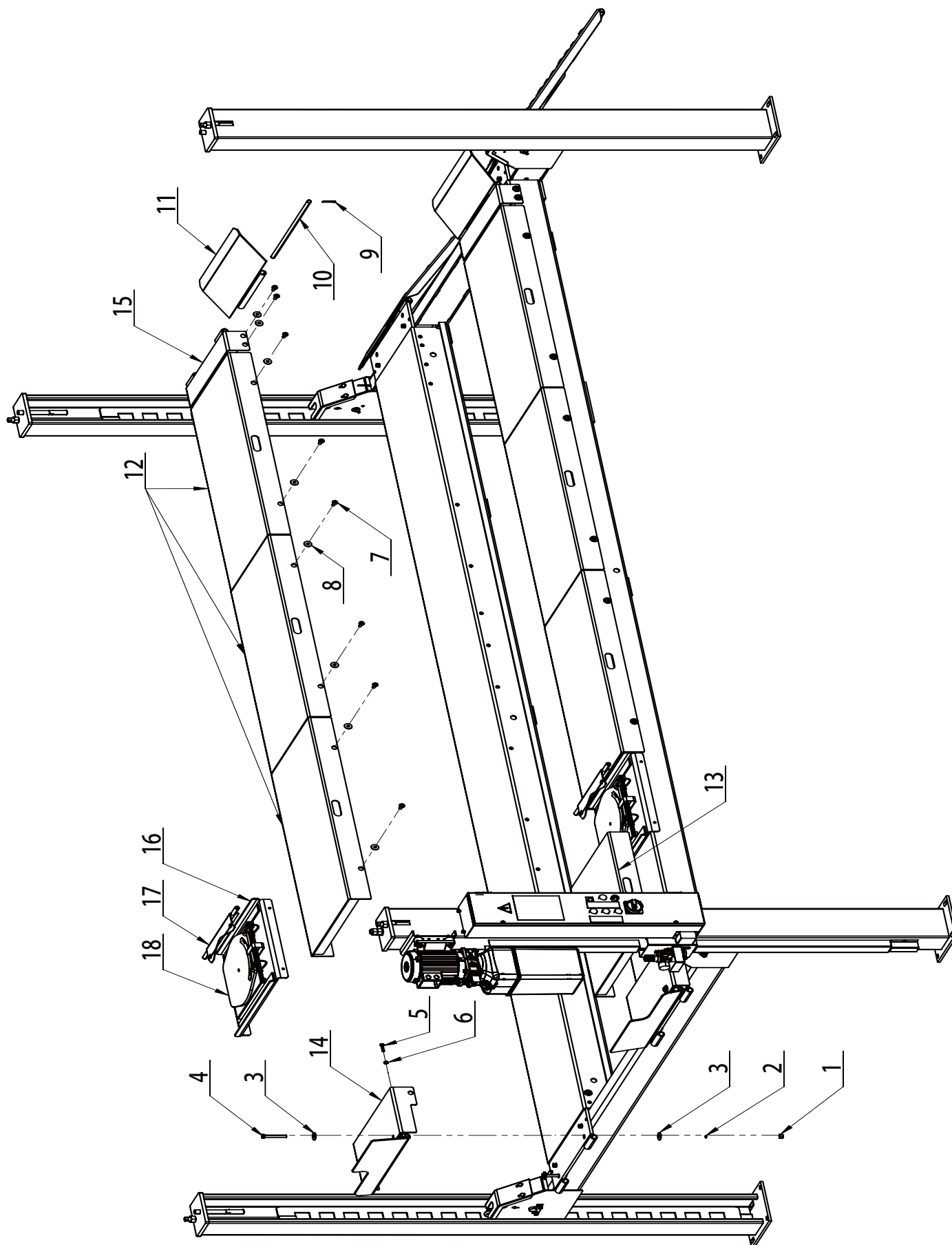


PB-SM40-1

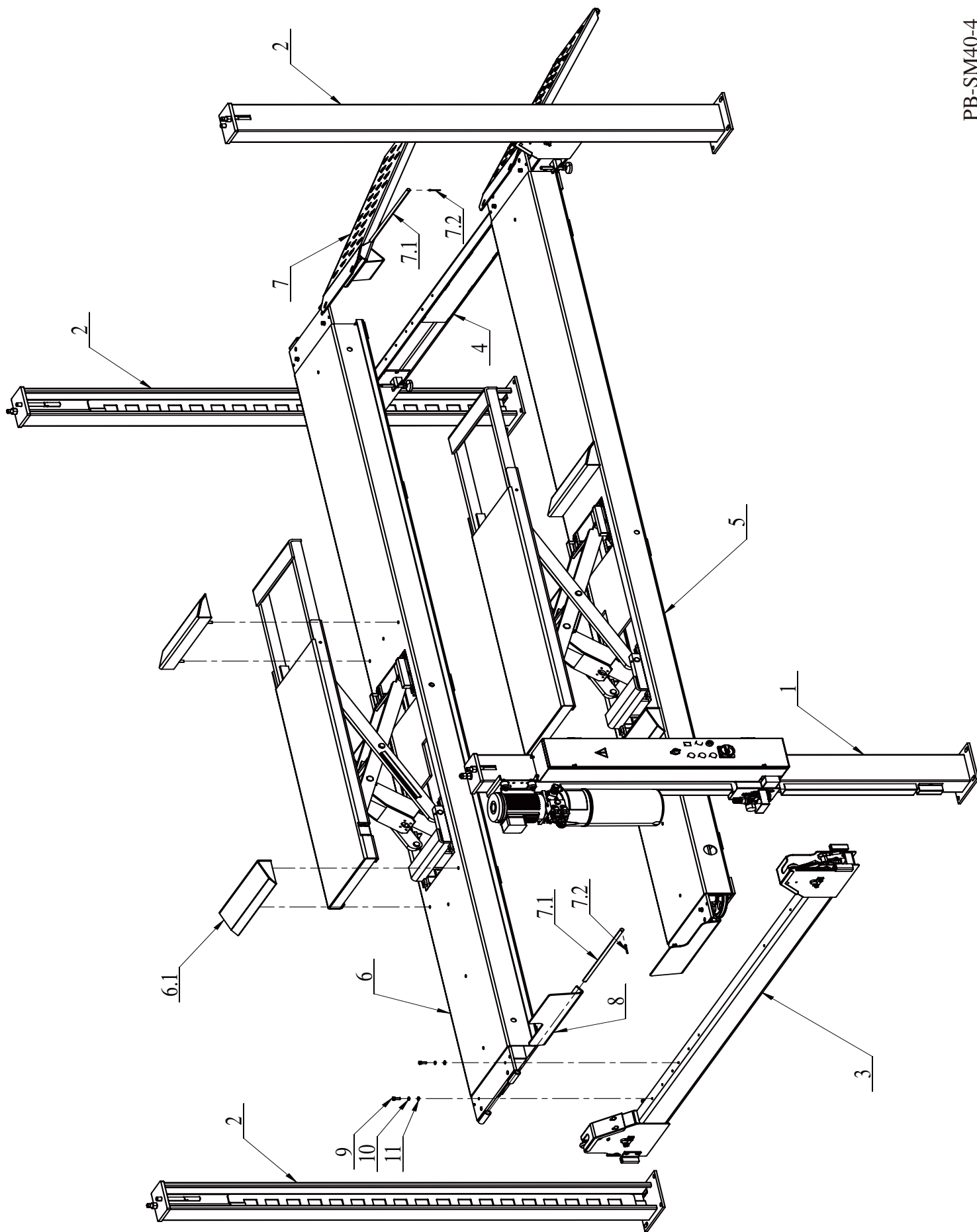
Detail for PB-SM40-1			
	PartNo.	Description	QTY
1	MOT40-1100	PU column weldment	1
2	MOT40-1200	Vice column weldment	3
3	NSM40-2100ZP	PU Crossbeam assemblyfor SM40-47/51	1
	NSM40-2100	PU Crossbeam weldment for SM40-47/51	
	MOT40-2100ZP	PU Crossbeam assemblyfor SM40NB-47	1
	MOT40-2100	Crossbeam weldment for SM40NB-47	
4	NSM40-2200ZP	Vice Crossbeam assemblyfor SM40-47/51	1
	NSM40-2200	Vice Crossbeam weldment for SM40-47/51	
	MOT40-2200ZP	Vice Crossbeam assemblyfor SM40NB-47	1
	MOT40-2100	Crossbeam weldment for SM40NB-47	
5	MOT40-51-3100ZP	Main runway assembly for SM40-51	1
	MOT40-51-3100	Main runway weldment for SM40-51	
	MOT40-3100ZP	Main runway assembly for SM40/SM40NB-47	1
	MOT40-3100	Main runway weldment for SM40/SM40NB-47	
6	MOT40-51-3200	Vice runway weldment for SM40-51	1
	MOT40-3200	Vice runway weldment SM40/SM40NB-47	
7	MOT40-1500ZP	Ramp assembly	2
7.1	MOT40-1500	Ramp weldment	2
7.2	MOT40-1503	shaft	4
7.3	FC5991Y	shaft	2
7.4	FC5992Y	Nylon tube	4
7.5	B60-16	Circlips for shaft $\phi 16$	4
7.6	B52-5*40	Cotter pin $\phi 5 \times 40$	8
8	SM40-47-3300BG	Wheel stop weldment B	1
9	SM40-47-3300AG	Wheel stop weldment A	1
10	B91-2*1600	Flxeible pipe	1
11	B12-10*25	Hexagon bolt M10*25 10.9 galvanize	8
12	B40-10	Lock washer $\phi 10$	8
13	B41-10	Flat washer $\phi 10$	8



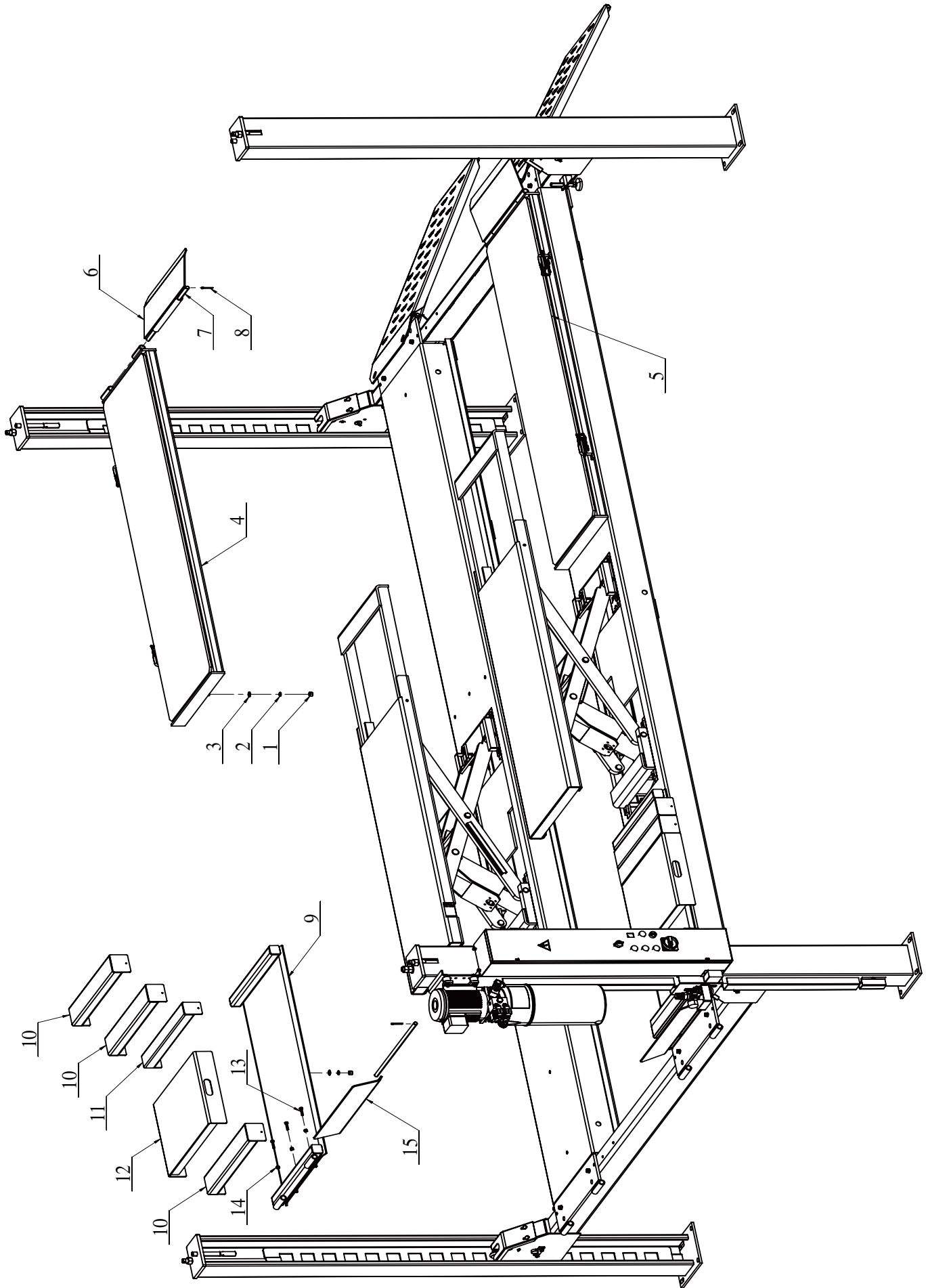
Detail for PB-SM40-2			
	PartNo.	Description	Qty
1	B30-12	Nut M12	4
2	B40-12	Lock washer $\phi 12$	4
3	B42-12	Big washer $\phi 12$	8
4	B10-12*90	Hexagon M12*90	4
5	B10-8*35	Hexagon M8*35	6
6	B30-8	Nut M8	6
7	B23-10*25	Cross recessed pan head screw M10*25	20
8	B42-10	Big washer $\phi 10$	20
9	B52-5*40	Cotter pin $\phi 5*40$	4
10	MOT40-1503	Shaft	2
11	SM60-1338G	stop runway weldment	2
12	SM60-1300GZP	Sliding plate assembly	2
13	SM60-1320G	Fixed filler weldment	2
14	SM60-1518G	400mm filler weldment for SM40/SM40NB-47	0
		400mm filler weldment for SM40-51	2
15	SM60-1332G	500mm filler weldment	4
16	SM40-1334	70mm filler weldment	2
17	SM40-1336	50mm filler weldment	2
18	SM40-1338	100mm filler weldment	2
19	SM40-51-1334B	End plate weldment	2
20	Turn table (50mm height)	Optional accessories(just for show)	0



Detail for PB-SM40-3			
	PartNo.	Description	Qty
1	B30-12	Nut M12	4
2	B40-12	Lockwasher $\phi 12$	4
3	B42-12	Big washer $\phi 12$	8
4	B10-12*90	Hexagon bolt M12*90	4
5	B10-8*35	Hexagon bolt M8*35	6
6	B30-8	Nut M8	6
7	B23-10*25	Cross recessed pan head screw M10*25	20
8	B42-10	Big washer $\phi 10$	20
9	B52-5*40	Cotter pin $\phi 5 \times 40$	4
10	MOT40-1503	shaft	2
11	SM60-1338G	Stop runway weldment	2
12	MOT40-4100	Fixed filler weldment	6
13	MOT40-4200	Filler weldment	1
14	SM40-51-1334B	End plate weldment	2
15	MOT40-4300	Fixed filler weldment	2
16	MOT40-4400	End plate weldment	2
17	FC7117Y	Bridge of turn table	4
18	Turn table(38mm height)	Optional accessories(just for show)	0
19	SM60-1518G	400mm filler weldment (not show)for SM40-51	2

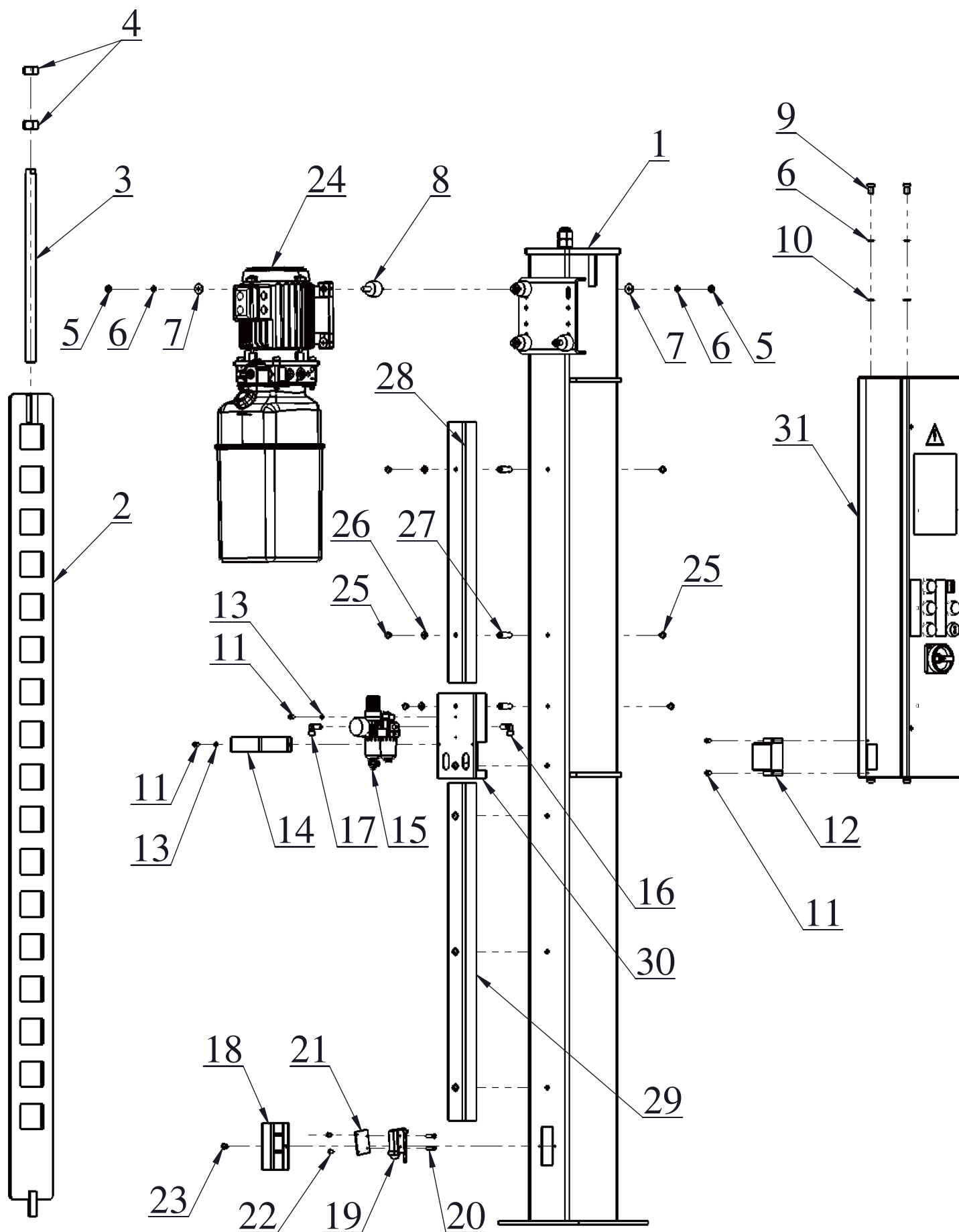


Detail for PB-SM40-4			
	PartNo.	Description	Qty
1	MOT40-1100B	PU column weldment	1
2	MOT40-1200	Vice column weldment	3
3	SM40LT-47-2100BZP	PU crossbeam assembly	1
	SM40LT-47-2100B	PU crossbeam weldment	
4	NSM40-2200ZP	Vice crossbeam assembly	1
	NSM40-2200	Vice crossbeam weldment	
5	SM40LT-47-3100BZP	Main runway assembly with lifting table	1
	SM40LT-47-3100BZPN	Main runway assembly(no lifting table)	
	SM40LT-47-3100B	Main runway weldment	
6	SM40LT-47-3200BZP	Vice runway assembly with lifting table	1
	SM40LT-47-3200B	Vice runway weldment(no lifting table)	
7	MOT40-1500ZP	Ramp assembly	2
7.1	MOT40-1503	Shaft	4
7.2	B52-5*40	Cotter pin $\phi 5 \times 40$	8
8	SM40-47-3300BG	Wheel stop weldment B	1
	SM40-47-3300AG	Wheel stop weldment A	1
9	B12-10*25	Hexagon bolt M10*25 10.9 galvanize	8
10	B40-10	Lock washer $\phi 10$	8
11	B41-10	Flat washer $\phi 10$	8



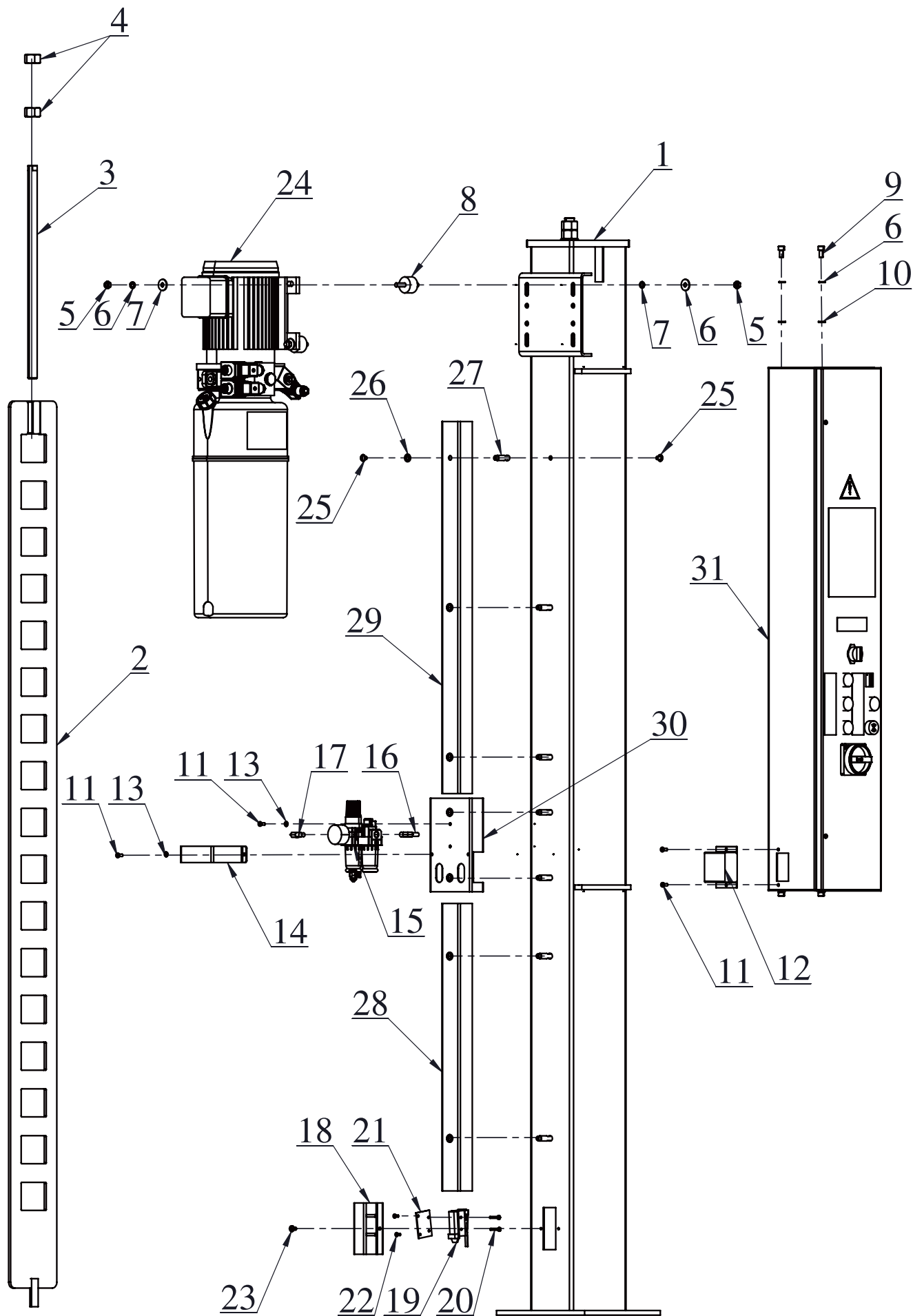
SM40LT-47 with alignment kit

Detail for PB-SM40-5			
	PartNo.	Description	Qty
1	B30-12	Nut M12	10
2	B40-12	Lock washer $\phi 12$	10
3	B41-12	Flat washer $\phi 12$	10
4	SM40LT-51-7000DCB	Sliding plate assembly	1
5	SM40LT-51-7000B	Sliding plate assembly	1
6	SM60-1338G	Stop runway weldment	2
7	MOT40-1503	Shaft	2
8	B52-5*40	Cotter pin $\phi 5 \times 40$	4
9	SM40LT-47-1701B	Elevated weldment	2
10	SM40-1338	100mm filler weldment	2
11	SM40-1334	70mm filler weldment	2
12	SM60-1518G	400mm filler weldment	2
13	B10-8*35	Hexagon bolt M8*35	6
14	B30-8	Nut M8	6
15	SM40LT-47-1600B	Wheel stop weldment	2



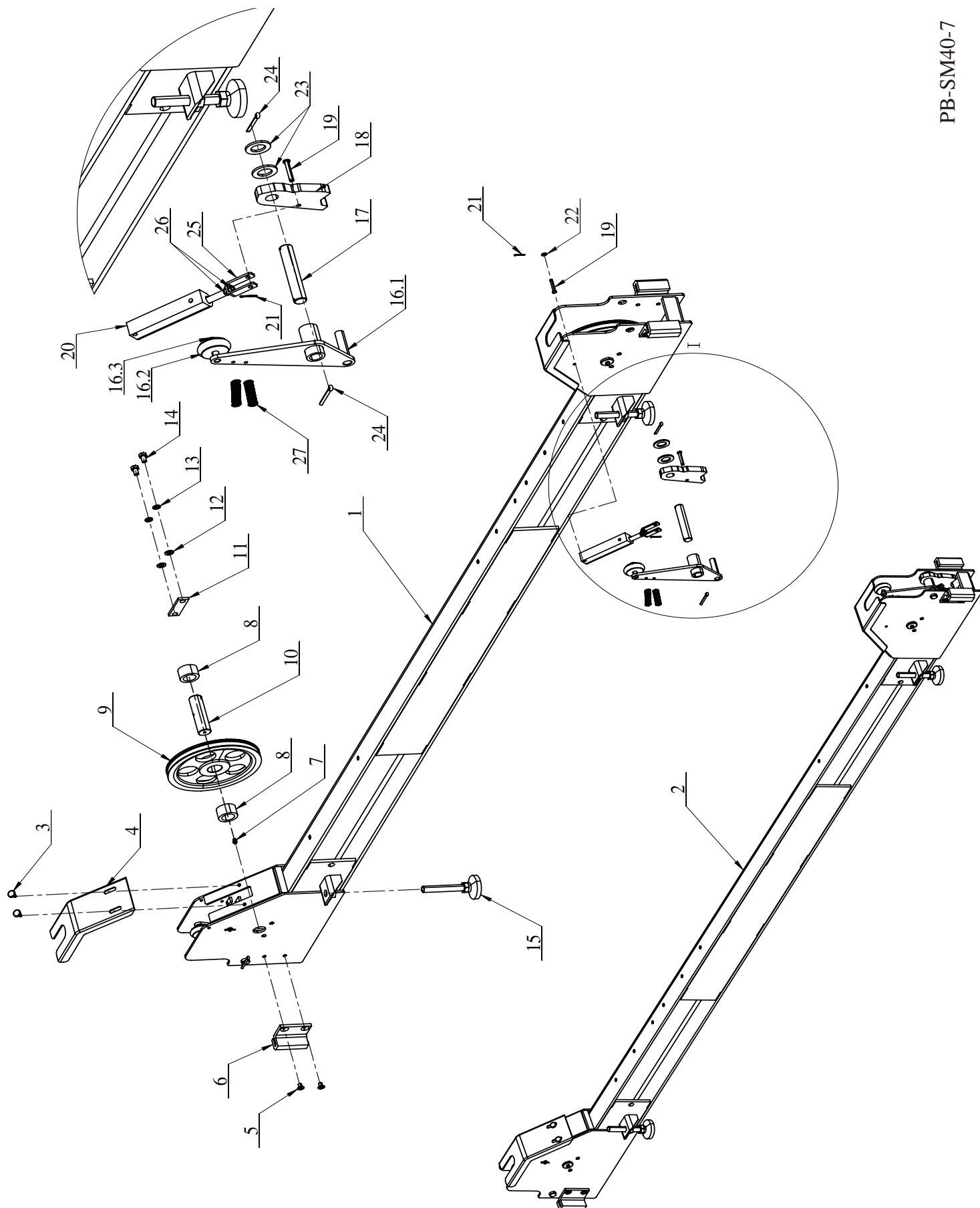
Detail for PB-SM40-6.1

	PartNo.	Description	Qty
1	MOT40-1100	PU columnweldment	1
2	MOT40-1300	Latch bar weldment	1
3	MOT40-1303	Bolt	1
4	B30-20	Nut M20	2
5	B30-8	Nut M8	8
6	B40-8	Lock washer $\phi 8$	12
7	B42-8	Big washer $\phi 8$	8
8	PV-2005	Power unit bolt	4
9	B20-8*16	Hexagon socket cap screwsM8*16	4
10	B41-8	Flat washer $\phi 8$	4
11	B23-5*12	Cross recessed pan head screwM5*12	2
12	MOT40-1002	Cover plate	1
13	B41-5	Flat washer $\phi 5$	4
14	MOT40-1003	Retainer	1
15	S130080	Air maintance	1
16	EPL6-N02	Fitting	1
17	EPL8-N02	Fitting	1
18	MOT40-1001	Cover	1
19	AZ-7120	Limit switch	1
20	B23-4*25	Cross recessed pan head screw M4*25	2
21	PV4-1017	switch holder	1
22	B23-4*10	Cross recessed pan head screwM4*10	2
23	B23-4*8	Cross recessed pan head screw M4*8	2
24	PU	Power unit	1
25	41659	Hexagon socket bolts with flange M6*10	14
26	G3T-1005	Rubber washer	7
27	G3T-1004	Stud	7
28	MOT40-1104G	Plastic cover(615mm)	1
29	MOT40-1003G	Plastic cover(796mm)	1
30	MOT40-1105	Base plate for air maintance	1
31	MOT40-1400	Control box assembly	1



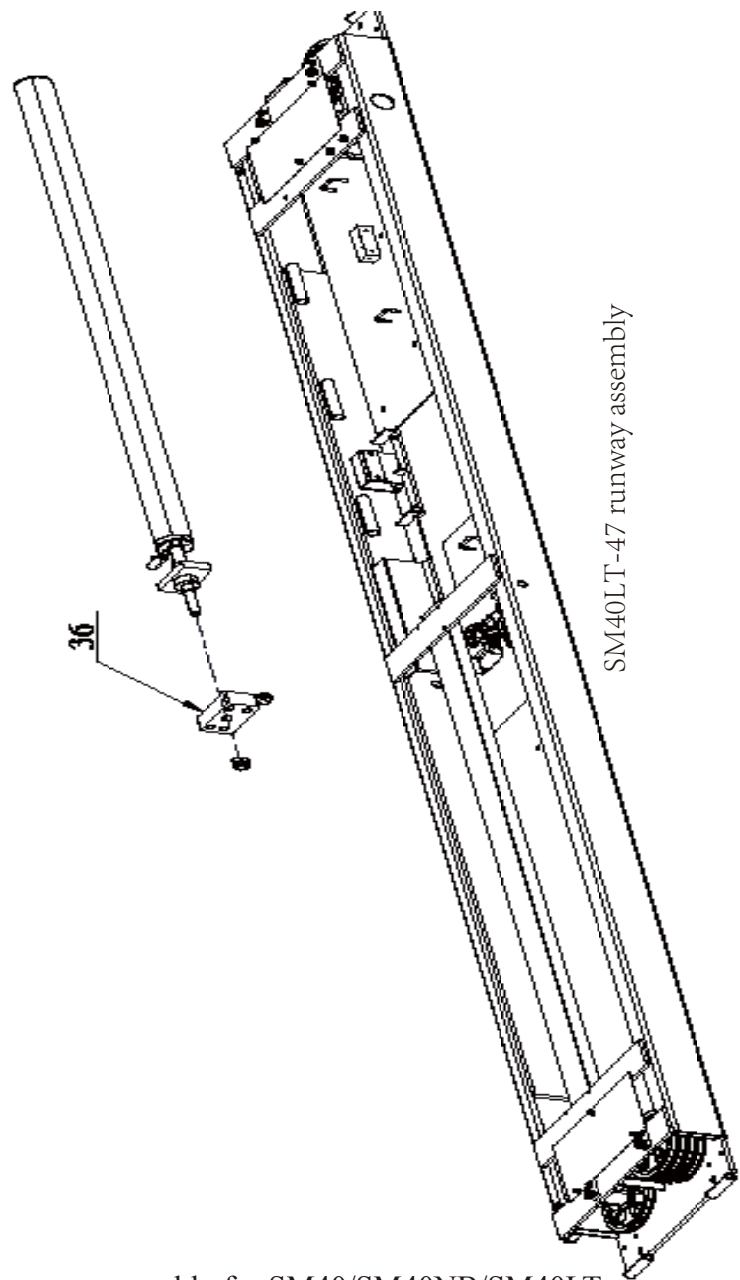
Detail for PB-SM40-6.2

	PartNo.	Description	Qty
1	MOT40-1100B	PU columnweldment	1
2	MOT40-1300	Latch bar weldment	1
3	MOT40-1303	Bolt	1
4	B30-20	Nut M20	2
5	B30-8	Nut M8	8
6	B40-8	Lock washer $\phi 8$	12
7	B42-8	Big washer $\phi 8$	8
8	PV-2005	Power unit bolt	4
9	B20-8*16	Hexagon socket cap screwsM8*16	4
10	B41-8	Flat washer $\phi 8$	4
11	B23-5*12	Cross recessed pan head screwM5*12	2
12	MOT40-1002	Cover plate	1
13	B41-5	Flat washer $\phi 5$	4
14	MOT40-1003	Retainer	1
15	S130080	Air maintance	1
16	EPL6-N02	Fitting	1
17	EPL8-N02	Fitting	1
18	MOT40-1001	Cover	1
19	AZ-7120	Limit switch	1
20	B23-4*25	Cross recessed pan head screw M4*25	2
21	PV4-1017	switch holder	1
22	B23-4*10	Cross recessed pan head screwM4*10	2
23	B23-4*8	Cross recessed pan head screw M4*8	2
24	PU	Power unit	1
25	41659	Hexagon socket bolts with flange M6*10	14
26	G3T-1005	Rubber washer	7
27	G3T-1004	Stud	7
28	MOT40-1104G	Plastic cover(615mm)	1
29	MOT40-1003G	Plastic cover(796mm)	1
30	MOT40-1105	Base plate for air maintance	1
31	MOT40-1400B	Control box assembly for LT lift	1

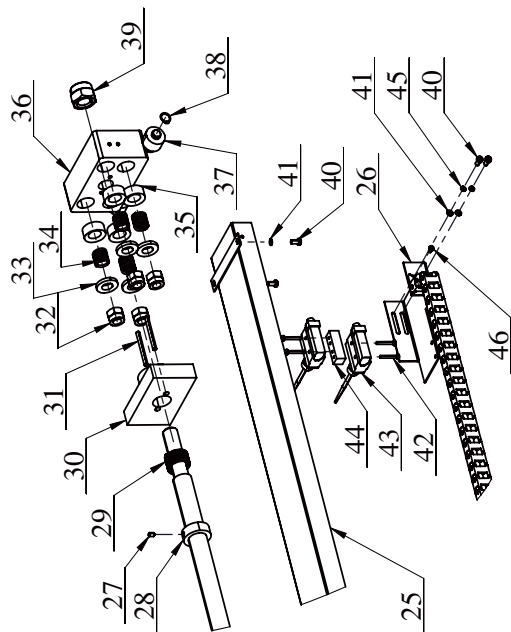


Crossbeam for SM40/SM40NB/SM40LT

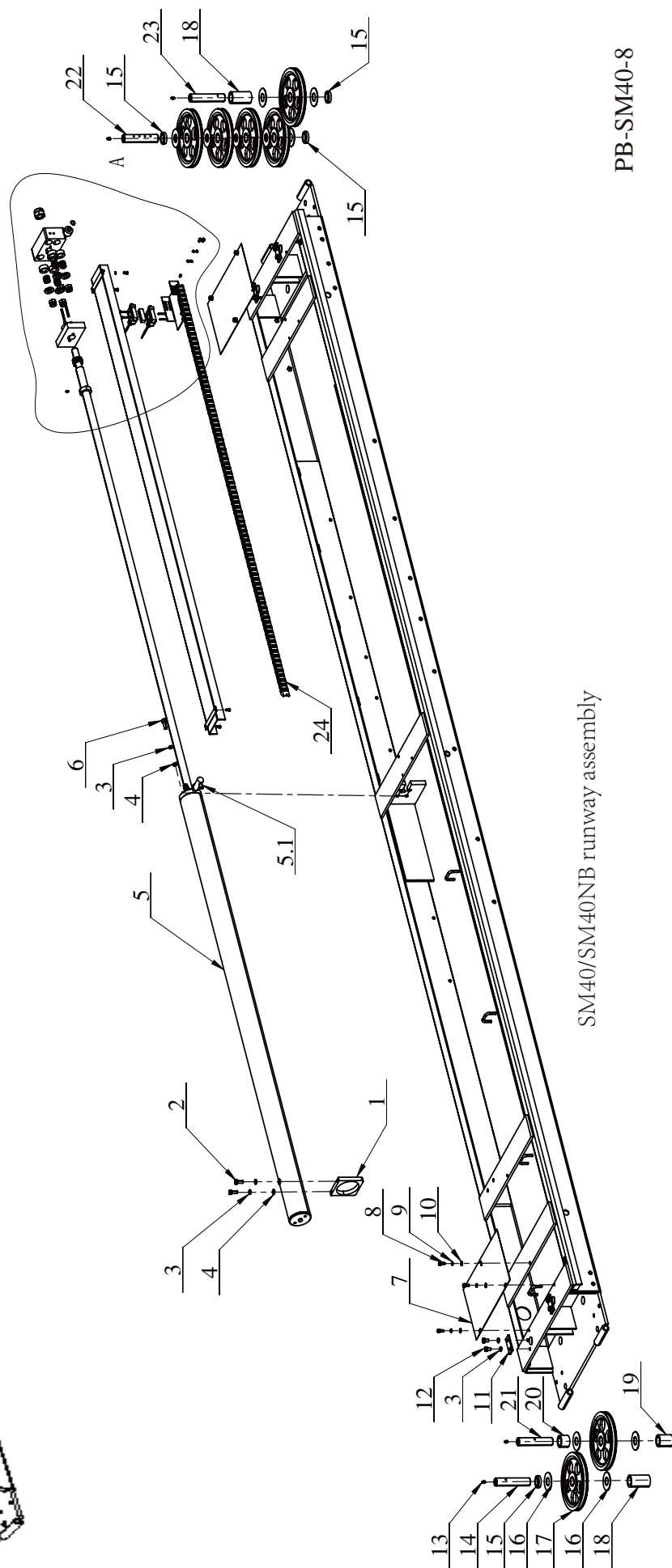
Detail for PB-SM40-7			
	PartNo.	Description	Qty
1.1	NSM40-2100ZP	PU crossbeam assembly for SM40	1
	NSM40-2100	PU crossbeam weldment for SM40	
1.2	MOT40-2100ZP	PU crossbeam assembly for SM40NB	1
	MOT40-2100	PU crossbeam weldment for SM40NB	
1.3	SM40LT-47-2100BZP	PU crossbeam assembly for SM40LT	1
	SM40LT-47-2100B	PU crossbeam weldment for SM40LT	
2.1	NSM40-2200ZP	Vice crossbeam assembly for SM40/SM40LT	1
	NSM40-2200	Vice crossbeam weldment for SM40/SM40LT	
2.2	MOT40-2200ZP	Vice crossbeam assembly for SM40NB	1
	MOT40-2100	Vice crossbeam weldment for SM40NB	
3	460440	Plastic plug	8
4	FC5985Y	Plastic cover	4
5	B24-8*12	Cross recessed pan head screw M8*12	16
6	FC622Y	Slider block	8
7	B85-6	Oil cup M6	4
8	MOT40-2002	Spacer	8
9	BMW-2370	Sheave with Bearing	4
10	MOT40-2004	Sheave pin	4
11	H4P-3006	Lock plate	4
12	B41-10	Flat washer $\phi 10$	8
13	B40-10	Lock washer $\phi 10$	8
14	B10-10*16	Hexagon bolt M10*16	8
15	BMW-2300G	Bracket	4
16	S110435Y	Kicker assembly	4
16.1	S121272Y	Kicker weldment	4
16.2	FC553-21Y	roll sleeve	4
16.3	B60-9	Circlips for shaft $\phi 9$	4
17	FC5901-7Y	shaft	4
18	FC5986Y	Lock plate	4
19	S130287Y	Pin	8
20	S130061	Air cylinder	4
21	B52-2*20	Cotter pin 2*20	8
22	B41-6	Flat washer $\phi 6$	4
23	B41-20	Flat washer $\phi 20$	8
24	B52-4*40	Cotter pin 4*40	8
25	FC5993Y	U plate	4
26	40622	Nut 1/4"-28NF	8
27	FC522-25Y	Spring	8



SM40LT-47 runway assembly



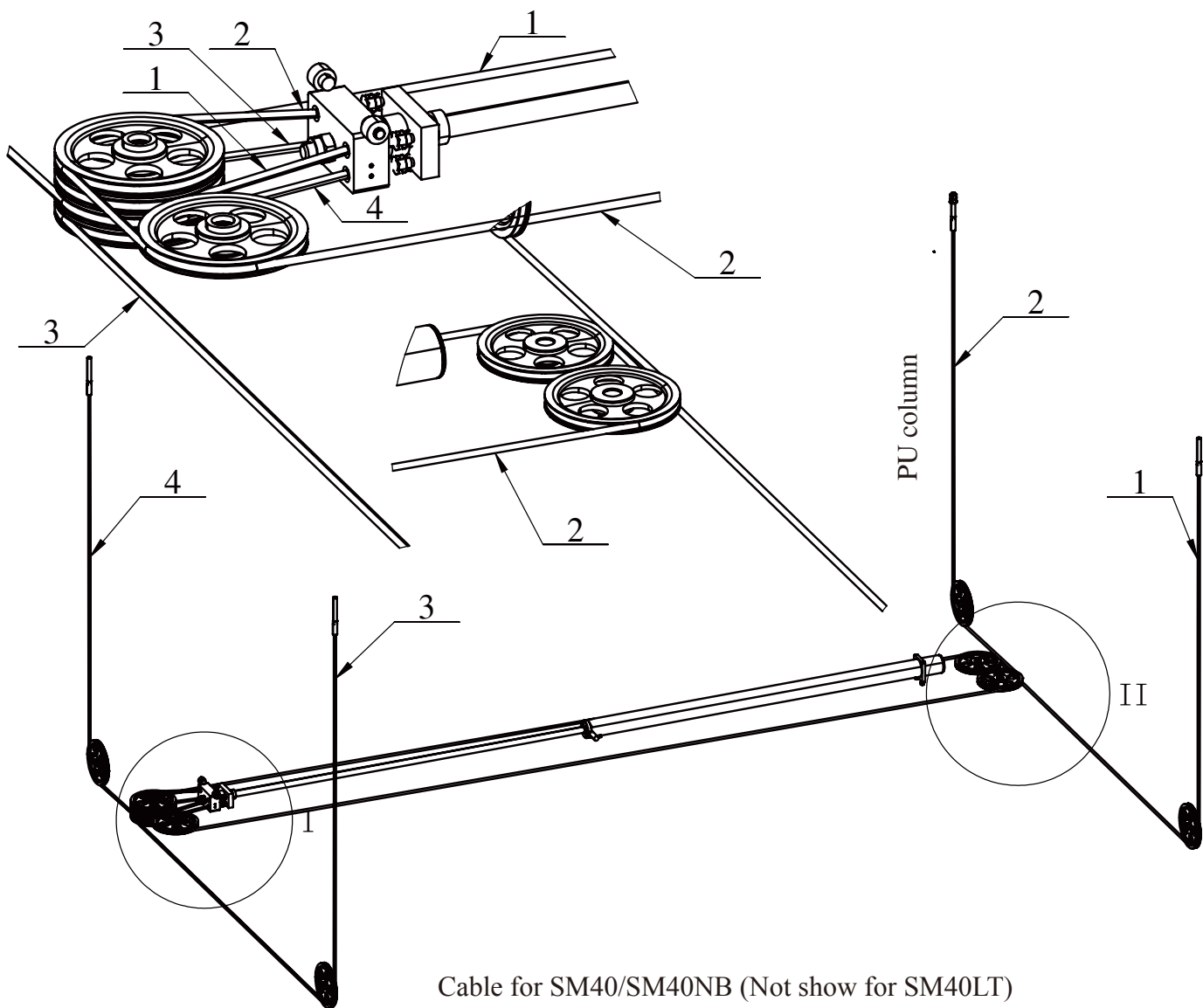
SM40/SM40NB runway assembly



PB-SM40-8

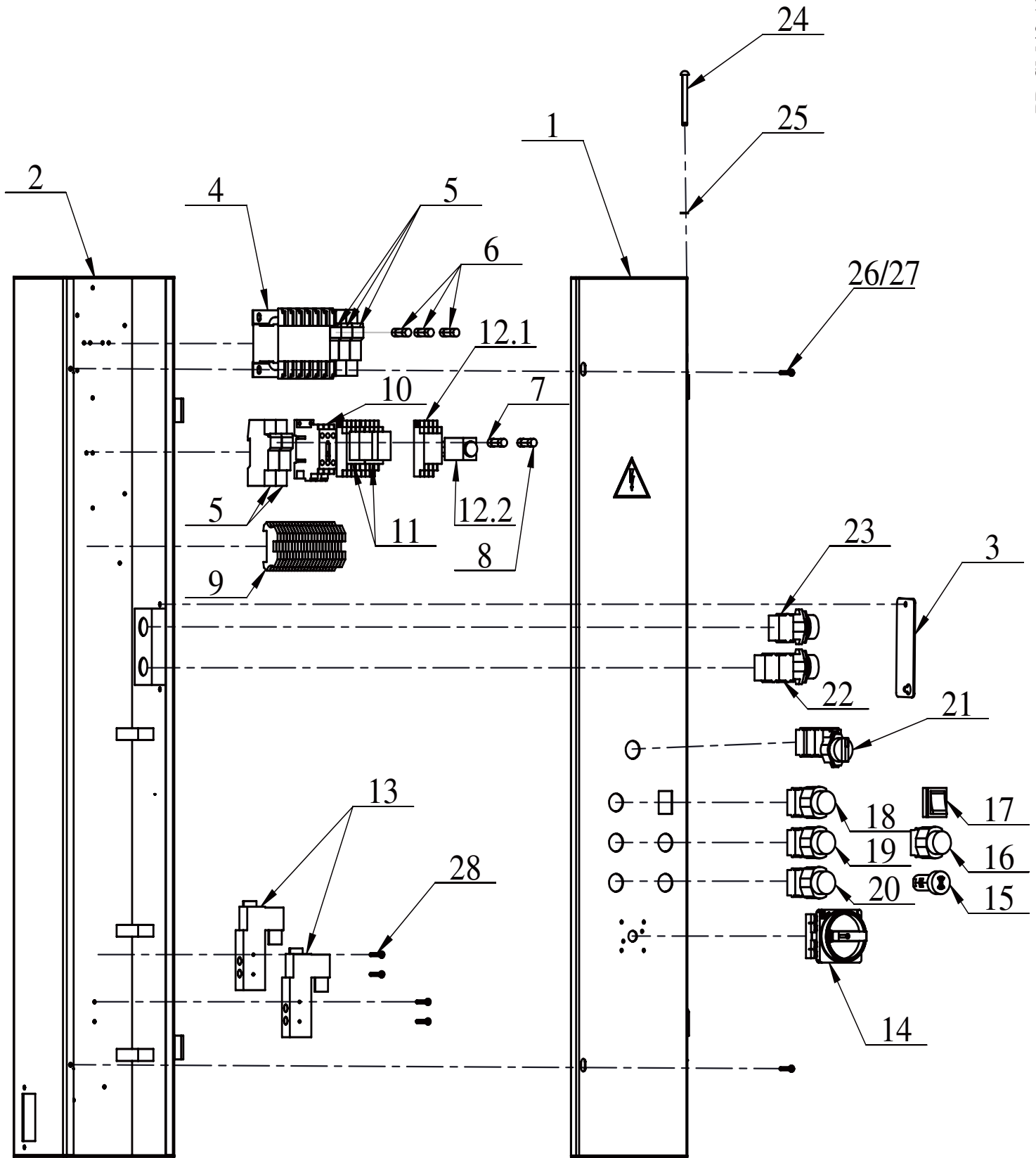
Detail for PB-SM40-8			
	PartNo.	Description	Qty
1	PV4-3017	Support plate for cylinder	1
2	B10-10*25	Hexagon bolt M10*25	2
3	B40-10	Spring washerφ10	14
4	B41-10	Flat washer φ10	6
5	MOT40-9100	Hydraulic cylinder	1
5.1	YG37-9200	Throttle valve	1
6	B20-10*30	Hexagon socket cap screws M10*30	4
7	PV4-3002	Cover plate	2
8	B20-8*16	Hexagon socket cap screws M8*16	6
9	B40-8	Spring washerφ8	6
10	B41-8	Flat wahser φ8	6
11	PV4-3016	Locker ,shaft	4
12	B10-10*16	Hexagon bolt M10*16	8
13	B85-6	Oil cup M6	4
14	MOT40-3010	Sheave pin	1
15	MOT40-3002	Spacer(8.8mm)	4
16	MOT40-3001	Washer	11
17	BMW-2370	Sheave with bearing	1
18	MOT40-3003	Spacer(81mm)	2
19	MOT40-3008	Spacer(55mm)	1
20	MOT40-3004	Spacer(35mm)	1
21	MOT40-3011	Sheave pin	1
22	MOT40-3009	Sheave pin	1
23	MOT40-3007	Sheave pin	1
24	B92-25*2280	Drag chain L=2280	1
25	MOT40-3013	Support plate for Drag chain	1
26	PV4-3022	Limit swith support plate	1
27	B21-6*10	Hex screw set M6*10	1
28	PV4-3023	Lock ring	1
29	PV4-3025	Spring	1
30	PV4-3020	Piston slider	1
31	B51-6*60	Snap ringφ6*60	2
32	B33-16	Lock nut M16	4
33	PV4-3021B	Cable lock ring	4
34	PV4-3024	Spring	4

35	PV4-3021A	Cable lock ring	4
36	MOT40-3006HJ	Cable support bar weldment	1
	MOT40-3006BHJ	Cable support bar weldment (for SM40LT)	1
37	SM60-1122	Roller	2
38	B60-14	Snap ring $\phi 14$	2
39	B331-24	Lock nut M24*2(8.8)	1
40	B20-5*12	Hexagon socket cap screws M5*12	6
41	B41-5	Flat washer $\phi 5$	4
42	B23-4*30	Cross recess pan head screw M4*30	4
43	TZ-7166	Limit switch	2
44	PV4-3030	Square bar	1
45	B40-5	Spring washer $\phi 5$	2
46	B23-4*8	Cross recess pan head screw M4*8	2

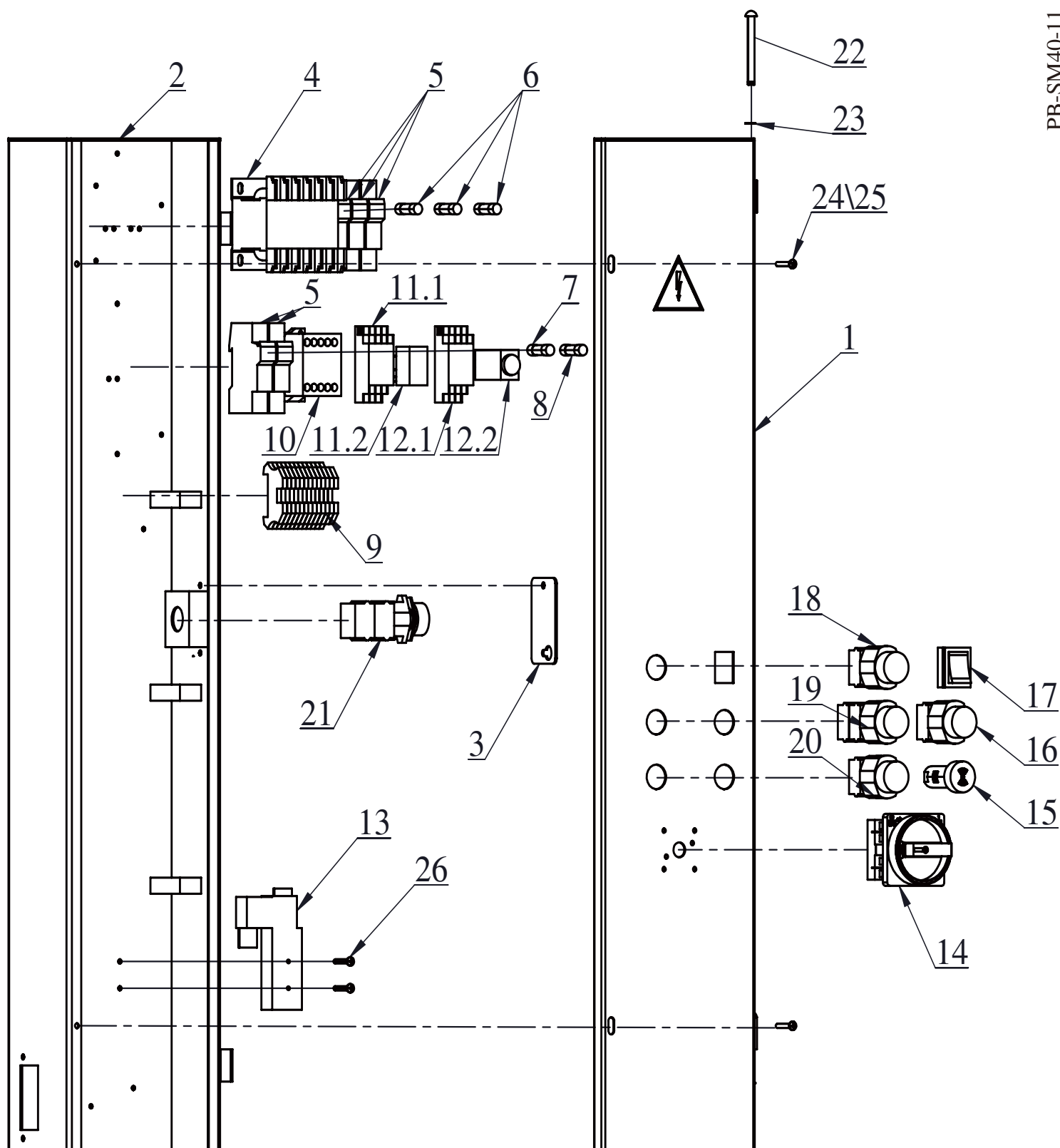


Cable for SM40/SM40NB (Not show for SM40LT)

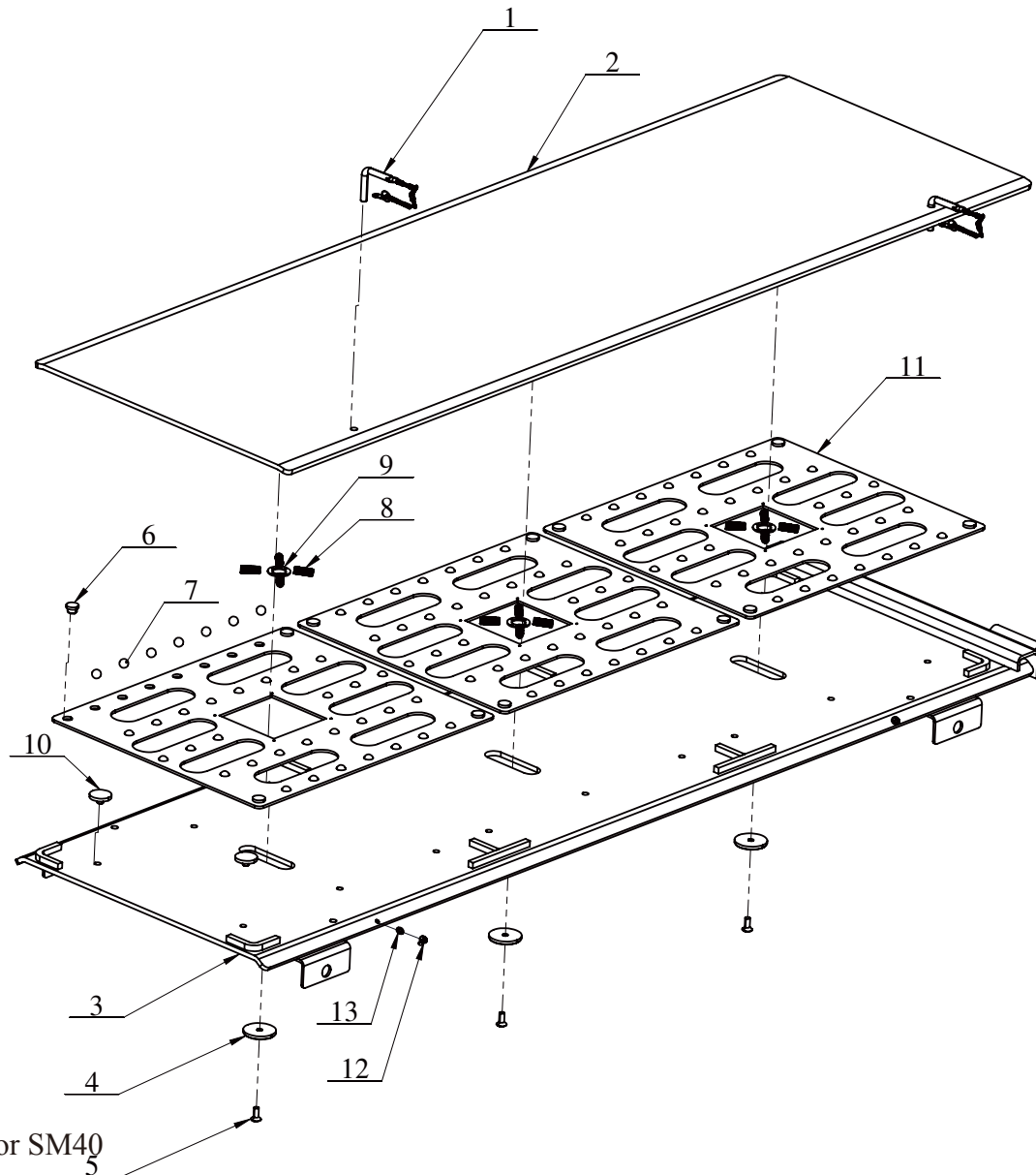
Detail for PB-SM40-9			
	PartNo.	Description	Qty
SM40-47/SM40LT-47			
1	MOT40-3012-5	Cable 10015mm)	1
2	MOT40-3012-6	Cable (8630mm)	1
3	MOT40-3012-3	Cable (5290mm)	1
4	MOT40-3012-4	Cable (3355mm)	1
SM40-51			
1	MOT40-3012-1	Cable (10415mm)	1
2	MOT40-3012-2	Cable (9030mm)	1
3	MOT40-3012-3	Cable (5290mm)	1
4	MOT40-3012-4	Cable (3355mm)	1
SM40NB-47			
1	MOT40-3012-7	Cable (9790mm)	1
2	MOT40-3012-8	Cable (8605mm)	1
3	MOT40-3012-9	Cable (5065mm)	1
4	MOT40-3012-10	Cable (3330mm)	1



Detail for PB-SM40-10(MOT40-1400B)			
	PartNo.	Description	Qty
1	MOT40-1416	Control box cover weldment	1
2	MOT40-1411	Control box button weldment	1
3	PV4-1032	Cover plate	1
4	JBK3-400/230V/24V	Voltage changer	1
5	LS501	Fuse base	5
6	RT18-16	Fuse(16A)	3
7	RT18-2	Fuse(2A) left	1
8	RT18-6	Fuse(6A) right	1
9	DK2.5-22/NSM40LT	Terminals component	1
10.1	XTCG012B00B5	Contactor	1
10.2	XTCGXFAC11	Additional contact	1
11.1	FS4COECO	Intermediate relay base	2
11.2	DRM570524LT	Intermediate relay	2
12.1	RXZE1M2C	Time Relay base	1
12.2	RXL2TMB7	Time Relay	1
13	3V210-06AC24V	Exchange valve	2
14	ER254B 4P	Power switch	1
15	AD16-22SM/R	Buzzer	1
16	LA39-A2-12/G	Down to lock button	1
17	KCD1-201N/5A/250VAC	Light switch	1
18	LA39-A2-12/W	Upper button	1
19	LA39-A2-21/K	Down button	1
20	LA39-A2-20/K	Down button in danger zone	1
21	LA39-A2-32-X/K	Switch button	1
22	LA39-A2-30/R	Emergency button for help	1
23	LA39-A2-10/Y	oil supplementary button	1
24	PV4-1036	Hinge B	2
25	B60-7	Snap ring $\phi 7$	2
26	B23-5*30	Cross recess head screw M5*30	2
27	B30-5	Nut M5	4
28	B23-4*30	Cross recess head screw M4*30	4



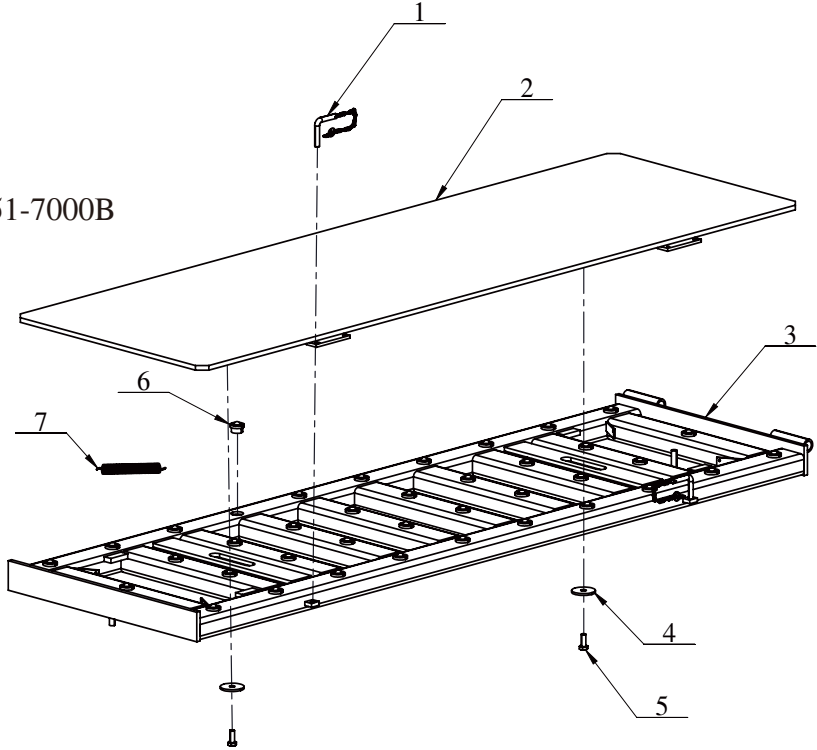
Detail for PB-SM40-11(MOT40-1400)			
	PartNo.	Description	Qty
1	MOT40-1406	Control box cover weldment	1
2	MOT40-1401	Control box button weldment	1
3	SM40BMW-47-3213	Cover plate	1
4	JBK3-400/230V/24V	Voltage changer	1
5	LS501	Fuse base	5
6	RT18-16	Fuse(16A)	3
7	RT18-2	Fuse(2A) left	1
8	RT18-6	Fuse(6A) right	1
9	DK2.5-14/bmw	Terminals component	1
10	AS16-30-01-20	Contactor	1
11.1	FS4COECO	Intermediate relay base	1
11.2	DRM570524LT	Intermediate relay	1
12.1	RXZE1M2C	Time Relay base	1
12.2	RXL2TMB7	Time Relay	1
13	3V210-06AC24V	Exchange valve	2
14	ER254B 4P	Power switch	1
15	AD16-22SM/R	Buzzer	1
16	LA39-A2-10/G	Down to lock button	1
17	KCD1-201N/5A/250VAC	Light switch	1
18	LA39-A2-21/W	Upper button	1
19	LA39-A2-31/K	Down button	1
20	LA39-A2-20/K	Down button in danger zone	1
21	LA39-A2-30/R	Emergency button	1
22	PV4-1036	Hinge B	2
23	B60-7	Snap ring $\phi 7$	2
24	B23-5*30	Cross recess head screw M5*30	2
25	B30-5	Nut M5	4
26	B23-4*30	Cross recess head screw M4*30	2



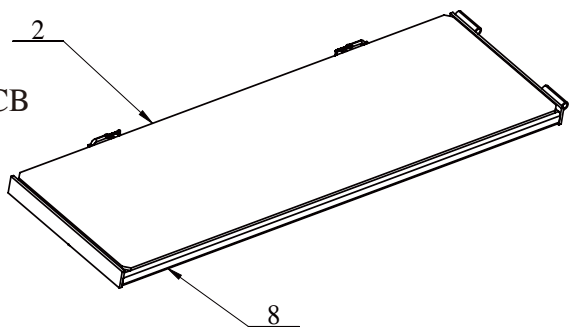
Detail for PB-SM40-12(SM60-1300GZP)

	PartNo.	Description	Qty
1	H4P-7500	Lock Pin	2
2	SM60-1317G	Weldment, upper sliding plate	1
3	SM60-1301G	Weldment, down sliding plate	1
4	SM65-2003	Nylon disk	3
5	B26-8*16	Hexagon socket head screw M8*16	3
6	SM60-1521-1	Nylon bolt	12
7	SM60-1315	Plastic ball	108
8	SM60-1316	Spring	12
9	SM60-1522	Spring support ring	3
10	SM60-1521	Nylon bolt	12
11	SM60-1310	Rear slip plate ball retainer	3
12	B23-60*10	Cross recessed pan head M6*10	2
13	B41-6	Flat washer $\phi 6$	2

SM40LT-51-7000B



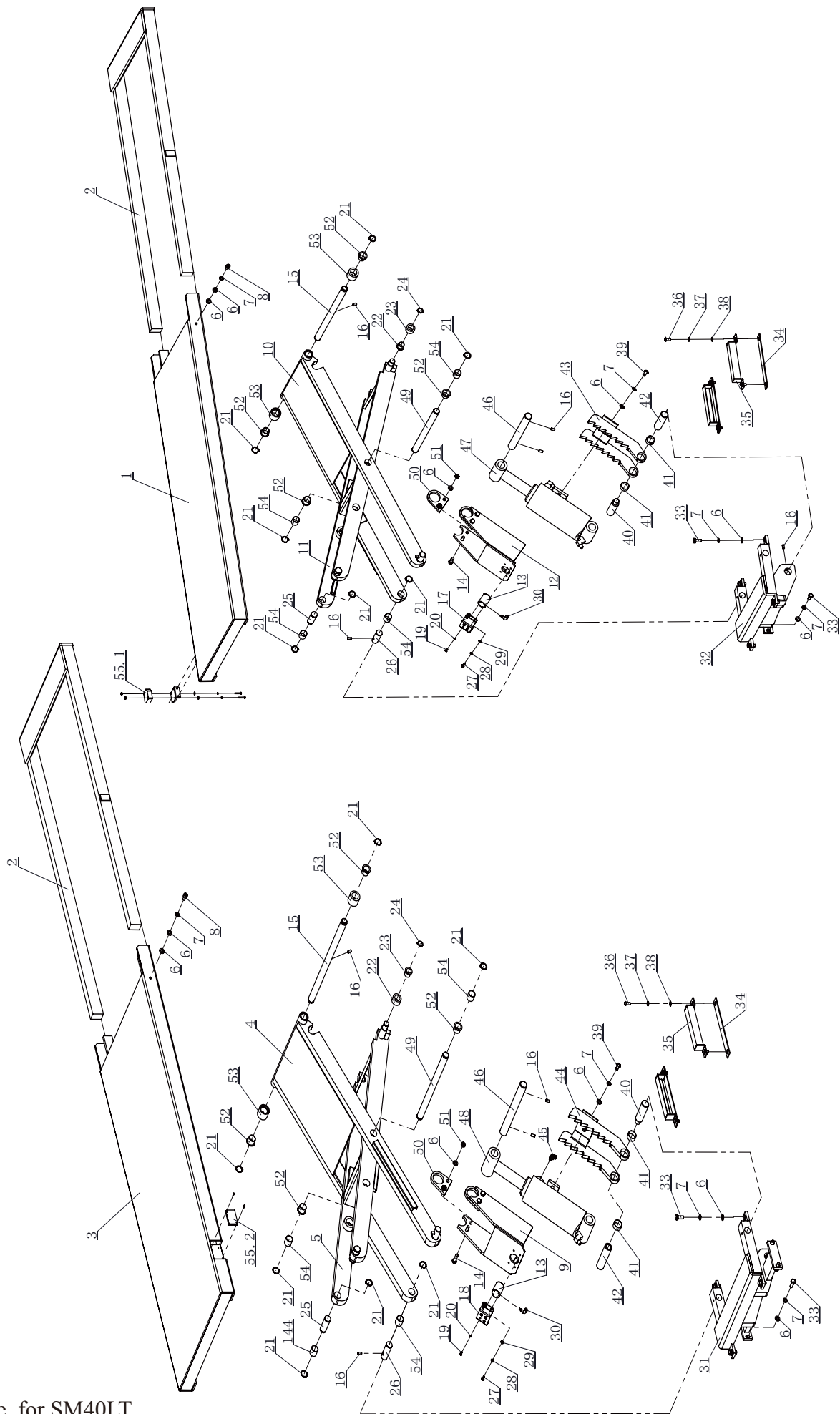
SM40LT-51-7000DCB



Sliding plate for SM40LT

Detail for PB-SM40-13 (SM40LT-51-7000B)			
	PartNo.	Description	Qty
1	H4P-7500	Lock Pin	2
2	SM40LT-51-7100B	Weldment,upper sliding plate	1
3	SM40LT-51-7200B	Weldment,down sliding plate	1
4	H4B-7108	Washer	2
5	B10-10*25	Hexagon bolt M10*25	2
6	B73-16	Ball bearing 16	68
7	H4B-7107	Spring	4
Detail for PB-SM40-13(SM40LT-51-7000DCB)			
1	H4P-7500	Lock Pin	2
2	SM40LT-51-7100B	Weldment,upper sliding plate	1
8	SM40LT-51-7200DCB	Weldment,down sliding plate	1
4	H4B-7108	Washer	2
5	B10-10*25	Hexagon bolt M10*25	2
6	B73-16	Ball bearing 16	68
7	H4B-7107	Spring	4

Lifting table for SM40LT



Detail for PB-SM40-14(lifting table for SM40LT)			
1	PV4-1800	Table ,Driving side	1
2	PV4-1700	Extend table	2
3	PV4-1900	Table,Driven side	1
4	PV4-4200	Outside frame ,Drive side	1
5	PV4-4400	Inside frame ,Drive side	1
6	B41-10	Flat washer Φ10	26
7	B40-10	Spring washer Φ10	24
8	B20-10×16	Hexagon socket screw with flat point M10×16	4
9	PV4-4850	Upside tooth,driven side	1
10	PV4-4100	Outside frame ,Driving side	1
11	PV4-4300	Inside frame ,Driving side	1
12	PV4-4800	Upside tooth,driving side	1
13	QG05-9100	Air cylinder	2
14	B12-10×30	Hexagon bolt M10×30(10.9)	8
15	PV4-4901	Up-shaft,outside frame	2
16	B21-8×16	Allen flat end set screws M8×16	14
17	PV4-4805	Air cylinder holder,Driving side	1
18	PV4-4851	Air cylinder holder,Driven side	1
19	B23-4×10	Cross head screw M4×10	8
20	B40-4	Spring washer Φ4	8
21	B60-25	Snap ring Φ25	20
22	B781-20215	SF-1 Oil-bearing(SF-1F)20215	4
23	PV4-4905	Wheel	4
24	B60-20	Snap ring Φ20	4
25	PV4-4909	Up-shaft,inside frame	4
26	PV4-4903	Shaft ,outside frame	4
27	B23-6×12	Cross head screw M6×12	8
28	B40-6	Spring washer Φ6	8
29	B41-6	Flat washer Φ6	8
30	SPL6-M5	Fitting	8
31	PV4-4600	Base weldment ,driven side	1
32	PV4-4500	Base weldment ,driving side	1
33	B12-10×25	Hexagon bolt M10×25(10.9)	10
34	PV4-4925	Orbit pad	4
35	PV4-4920	Orbit cover	4
36	B25-8*20	Socket head screw M8*20,Discal head	8
37	B40-8	Spring washer Φ 8	8
38	B41-8	Flat washer Φ8	8

39	B25-10×20	Socket head screw M10×20,Discal head	4
40	PV4-4907	Cylinder Pin A	2
41	B78-3015	SF-1 bearing 3015	4
42	PV4-4908	Cylinder Pin B	2
43	PV4-4700	Downside tooth,driving side	1
44	PV4-4750	Downside tooth,driven side	1
45	SPL6-02	Fitting	1
46	PV4-4906	Shaft	2
47	YG39-9100	Cylinder	1
48	YG40-9100	Cylinder	1
49	PV4-4904	Connect shaft	2
50	PV4-4900	Connect plate,upside tooth	4
51	B33-10	Lock nut M10	8
52	B781-25215	SF-1 Oil-bearing (SF-1F) 25215	8
53	PV4-4902	Wheel	4
54	B78-2525	SF-1 bearing 2525	12
55	LRK-5050-115	Optoelectronic swith kit	1
55.1	LRK-5050-115-1	Optoelectronic swith	1
55.2	LRK-5050-115-2	Switch reflector	1

V . Spare Parts List

For SM40-47/51,SM40NB-47,SM40LT-47

1.



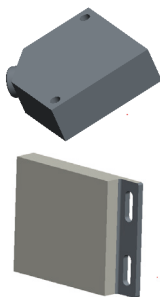
Part.No	Description	Qty	Dim
BMW-2370	Sheave with bearing	11	Φ222*22
See PB-SM40-7/8,For SM40/SM40NB/SM40LT			

2.



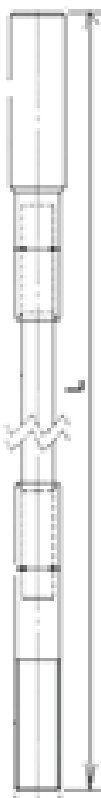
Part.No	Description	Qty	Dim
MOT40-2004	Sheave pin for crossbeam	4	Φ30*102
MOT40-3007	Sheave pin for runway	1	Φ30*147
MOT40-3009	Sheave pin for runway	1	Φ30*147
MOT40-3011	Sheave pin for runway	1	Φ30*147
MOT40-3010	Sheave pin for runway	1	Φ30*147
See PB-SM40-7/8,For SM40/SM40NB/SM40LT			

3.



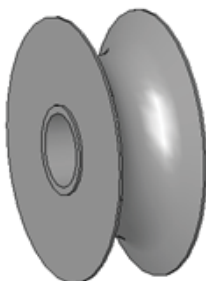
Part.No	Description	Qty
LRK-5050-115	Optoelectronic switch kit	1
LRK-5050-115-1	Optoelectronic switch	1
LRK-5050-115-2	Switch reflector	1
See PB-SM40-14,For SM40LT		

4.



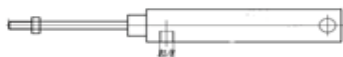
Part.No.	Description	Qty	Dim
For SM40-47/SM40LT-47			
MOT40-3012-3	Cable	1	5290mm
MOT40-3012-4	Cable	1	3355mm
MOT40-3012-5	Cable	1	10015mm
MOT40-3012-6	Cable	1	8630mm
For SM40-51			
MOT40-3012-3	Cable	1	5290mm
MOT40-3012-4	Cable	1	3335mm
MOT40-3012-1	Cable	1	10415mm
MOT40-3012-2	Cable	1	9030mm
For SM40NB-47			
MOT40-3012-7	Cable	1	9790mm
MOT40-3012-8	Cable	1	8605mm
MOT40-3012-9	Cable	1	5065mm
MOT40-3012-10	Cable	1	3330mm
See PB-SM40-9			

5.



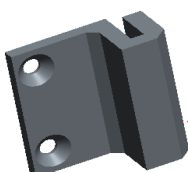
Part.No	Description	Qty
FC553-21Y	Nylon wheel for guiding cable	4
See PB-SM40-7,For SM40/SM40NB/SM40LT		

6.



Part.No	Description	Qty
S130061Y	Air cylinder for crossbeam	4
See PB-SM40-7,For SM40/SM40NB/SM40LT		

7.



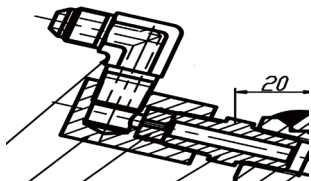
Part.No	Description	Qty
FC5706-16Y	Slider block for yoke end	8
See PB-SM40-7,For SM40/SM40NB/SM40LT		

8.



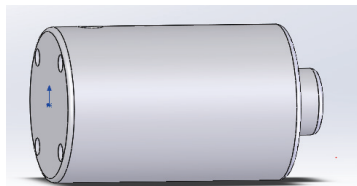
Part.No	Description	Qty
YG37-9200	Throttle valve	1
For SM40/SM40NB/SM40LT main cylinder		

9.



Part.No	Description	Qty
YG39-9200	Throttle valve	1
For SM40LT lifting table cylinder		

10.



Part.No	Description	Qty
QG05-9100	Air cylinder on lifting table	2
See PB-SM40-14, For SM40LT lifting table		

11.



Part.No	Description	Qty
PV4-3024	Spring on cable end	4
See PB-SM40-8, For SM40/SM40NB/SM40LT		

12.



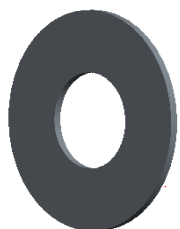
Part.No	Description	Qty
PV4-3020	Nylon block on cable end	1
See PB-SM40-8 , For SM40/SM40NB/SM40LT		

13.



Part.No	Description	Qty
Fc522-25Y	Spring on yoke end	8
See PB-SM40-7, For SM40/SM40NB/SM40LT		

14.



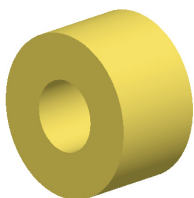
Part.No	Description	Qty
MOT40-3001	Washer between sheaves	11
See PB-SM40-8, For SM40/SM40NB/SM40LT		

15.

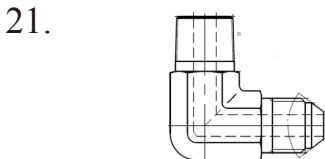
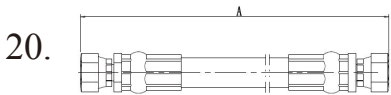
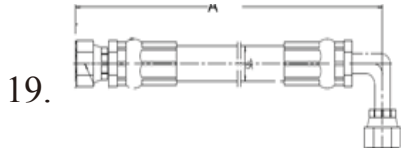
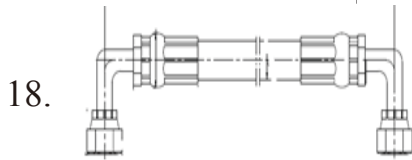
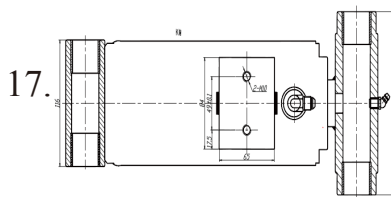


Part.No	Description	Qty	Remark
MOT40-9100	Cylinder for main lift	1	Stroke=1803
See PB-SM40-8, For SM40/SM40NB/SM40LT			

16.



Part.No	Description	Qty
SM60-1122	Roller on the cable end	2
See PB-SM40-8 For SM40/SM40NB/SM40LT		



Part.No	Description	Qty	Remark
YG39-9100	Cylinder	1	ODΦ114 for lifting table
YG40-9100	Cylinder	1	ODΦ100 for lifting table
See PB-SM40-14, For SM40LT lifting table			

Part.No	Description	Qty	Remark
NSM40LT-9801-1	Hose for lifting table	1	A=3550
For SM40LT			

Part.No	Description	Qty	Remark
2WB-34	Hose for main lift	1	A=5020(-47 lift)
MOT40-9801-1	Hose for main lift	1	A=5400(-51 lift)
SM40LT-9801-7	Hose for lifting table	1	A=896
SM40LT-9801-5	Hose for lifting table	1	A=3636
For SM40/SM40NB/SM40LT			

Part.No	Description	Qty	Remark
SM40LT-9801-6	Hose for lifting table	1	A=1116
For SM40LT			

Part.No	Description	Qty	Remark
WR-006	Fitting	1	
For main cylinder on SM40LT lifting table			

Part.No	Description	Qty	Remark
BZMOT40-13	package for install	1	
Bolts for installing the Power unit and runway			

Part.No	Description	Qty	Remark
BZMOT40-14	package for install SM40/SM40NB	1	
BZMOT40-15	Package for install SM40LT	1	
Air maintenance and hydraulic fitting for connecting to PU			

Other hydraulic components

Part.No	Description	Qty	Remark
MOT40-9180	Seal kit for main cylinder	1	
YG39-9180	Seal kit for lifting table cylinder	1	
YG40-9180	Seal kit for lifting table cylinder	1	

ATTACHMENT

Four column lifting platform

SM40-47/51

SM40NB-47

SM40LT-47

Maintenance schedule:

Notes for execution of the visual and
functional testing

Notes for execution of the visual and functional testing

In the scope of periodical inspections, the followings must be checked in particular:

1. Information on the lifting platform	Object to be checked
Nameplate Labeling Summary of the manual	Fastening Readability Completeness
2.Detailed operating instructions	Condition Readability
3.Warnings	Condition Noticeability
4. Protection against unauthorized use	Condition Function Mobility Safety key
5. Actuators	
Lifting, lowering Tilting, tipping Turning, pivoting Switching Opening and closing (of the loading tailgate) Driving Supports	Condition Function Mobility Clear assignment Permanent labeling of the direction of movement Protection against unintentional actuation Locking mechanism of the actuators with multiple controls
6. Emergency shutdown, Emergency drainage	Condition Function Mobility
7. Signalling devices, devices for communication	Condition Function Noticeability Reliability
8. Devices for the stable installation	
Spirit level Supports Spindles Bottom pan Elimination of the spring travel	Condition Function Mobility Wear Deformation Corrosion Cracks
9. Supporting structure	Cracks Deformation Corrosion Mobility of guides, pulleys, hinges, telescopes, Wear of guides, pulleys, hinges, fastening and securing of removable parts Effectiveness of locking mechanisms

10. Load suspension devices	
Protection against sliding Roll-off protection Holding device Protection of the hinged bracket	Condition Function
Safety fence	Condition Corrosion Fastening and securing of removable parts Effectiveness of locking mechanisms Mobility of movable parts
Ground	Surefootedness Deformation Corrosion Fastening and securing of removable parts
Parallel motion on operating platforms	Condition Function Wear Cracks Corrosion
Stowable operating platform	Condition and effectiveness of the locking mechanism
Stairs	Surefootedness Deformation Corrosion Damage Fastening and securing of removable parts Welded connections
11. Steel wire rope Cable connections	Wear Corrosion Wire breakages Wire break nests Pinch points Loosening of the outer layer Bird-caging
Sheaves and pulleys	Cracks Signs of wear Burr formation in the groove Correct aligning of the groove
Rope winding Clamping device Securing at rope bearings Protection against coming off of the rope	Condition Function
12. Steel link chains, chain linkings	Mobility Wear Cracks Securing of the studs, e.g. by rivet head, ring

Chain wheels Sprockets	Condition Function
Clamping device Securing of the chain guide	Condition Function
13. Spindles	Storage Deformation Contamination Wear of the threads Notches Striations Grooves, applications Efficiency of the covering
Main nut	Wear of the thread (play)
Compensation ring	Bearing Condition Notches Striations
14. Racks	Fastening Wear Contamination Joints of jointed racks
Pinions	Cracks Wear Contamination Fastening and play of the spindle
15. Hydraulics	Leakage Leak test Venting
Oil reservoir	Condition and readability of the display Control of the oil quantity Efficiency of the shut-off device in case of lack of oil
Lines Line connections	Fastening Damages Deformation Corrosion
Hoses Hose connections	Fastening Damage Age Brittleness Porosity
Cylinders	Fastening Cracks Pipe connections and hose connections Tightness of the sleeves
Pistons	Surface of the piston rod Striations Contamination

Filters	External condition
Pressure control valve	External condition Lead seal undamaged
16. Pneumatics	
Lines Line connections	Leakage Fastening Damage Deformation Corrosion
Hoses Hose connections	Fastening Damage Age Brittleness Porosity
Cylinders	Fastening, cracks, pipe connections and hose connections Tightness of the sleeves
Pistons	Surface of the piston rod, striations, contamination
Relief valve	External condition, lead seal undamaged
Gauge, pressure reducer	External condition and effectiveness
17. Driving mechanisms (without bogie)	Connections of parts of the driving mechanism shock-free starting
Brakes, self-locking gearbox, couplings	Wear, effectiveness
18. Driving carriage, bogie	
Service brakes, emergency brakes	Wear, effectiveness
Drawbar protection	Condition, effectiveness
Positive guide, guide rail Rail joints, end stops, cow-catcher Protection against derailling	Deformation, cracks, condition of the fastening
19. Points of access and points of loading	Surefootedness, deformation of handrails, damage Corrosion, securing of removable parts
20. Electrical equipment	
Lines	Damage, fastening, strain relief of external lines
Protective earth	Damage, fastening
21. Insulation on aerial work platforms, as far as the aerial work platform is intended for work on or near unprotected, live parts of electrical installations	
Insulation work platform/lifting equipment as well as lifting equipment/driving carriage	Contamination, damage, insulation resistance
22. Special safety devices	
Emergency limit switch, slack rope switch, rope break switch, chain fracture switch, control locks, switch-off strips, restart protection, anti-tipping device (for stowable work platforms), safety catch, completeness	Effectiveness, fastening, condition Deformation, effectiveness of the switch elements, contamination, condition of pressure springs

These notes do not claim to be complete, and they must be matched to the lifting platforms to be examined.

ATTACHMENT

Four column lifting platforms
Inspection log

Inspection log for lifting platforms

Type: _____

Serial number: _____

Year of construction: _____

Operator: _____

Day of first commissioning: _____

BlitzRotary GmbH
Hüfinger Straße 55
D-78199 Bräunlingen



Telephone +49.771.9233.0
Fax +49.771.9233.99
europe@rotarylif.com
www.rotarylif.com

Test Report

Of the examination before the first commissioning by technical expert / surveyor
The lifting platform underwent an examination regarding operational readiness on _____

The following/no*) faults found.

Test scope _____

Still pending _____

Partial tests

There are no*) reasons against continued operation, retesting is not*) required.

The technical expert/surveyor

(Place ,date)

(Signature)

Name and address

(in block letters) _____

Job title _____

Employed at _____

Operator or Representative

Deficiencies noted

(Place ,date)

(Signature)

Deficiencies fixed

(Place ,date)

(Signature)

Retesting

The lifting platform underwent retesting on _____

The deficiencies which were pointed out in the examination have not*) been fixed yet.

There are no*) reasons against continued operation, retesting is not*) required.

The technical expert/surveyor

(Place ,date)

(Signature)

Name

and

address

(in block letters) _____

Job title _____

Employed at _____

Test Report

Of the examination before the first commissioning by technical expert / surveyor
The lifting platform underwent an examination regarding operational readiness on _____

The following/no*) faults found.

Test scope _____

Still pending _____

Partial tests _____

There are no*) reasons against continued operation, retesting is not*) required.

The technical expert/surveyor

(Place ,date)

(Signature)

Name and address

(in block letters) _____

Job title _____

Employed at _____

Operator or Representative

Deficiencies noted

(Place ,date)

(Signature)

Deficiencies fixed

(Place ,date)

(Signature)

Retesting

The lifting platform underwent retesting on _____

The deficiencies which were pointed out in the examination have not*) been fixed yet.

There are no*) reasons against continued operation, retesting is not*) required.

The technical expert/surveyor

(Place ,date)

(Signature)

Name

and

address

(in block letters) _____

Job title _____

Employed at _____

Test Report

Of the examination before the first commissioning by technical expert / surveyor
The lifting platform underwent an examination regarding operational readiness on _____

The following/no*) faults found.

Test scope _____

Still pending _____

Partial tests

There are no*) reasons against continued operation, retesting is not*) required.

The technical expert/surveyor

(Place ,date)

(Signature)

Name and address
(in block letters) _____

Job title _____

Employed at _____

Operator or Representative

Deficiencies noted

(Place ,date)

(Signature)

Deficiencies fixed

(Place ,date)

(Signature)

Retesting

The lifting platform underwent retesting on _____

The deficiencies which were pointed out in the examination have not*) been fixed yet.

There are no*) reasons against continued operation, retesting is not*) required.

The technical expert/surveyor

(Place ,date)

(Signature)

Name

and

address

(in block letters) _____

Job title _____

Employed at _____

Test Report

Of the examination before the first commissioning by technical expert / surveyor
The lifting platform underwent an examination regarding operational readiness on _____

The following/no*) faults found.

Test scope _____

Still pending _____

Partial tests

There are no*) reasons against continued operation, retesting is not*) required.

The technical expert/surveyor

(Place ,date)

(Signature)

Name and address
(in block letters) _____

Job title _____

Employed at _____

Operator or Representative

Deficiencies noted

(Place ,date)

(Signature)

Deficiencies fixed

(Place ,date)

(Signature)

Retesting

The lifting platform underwent retesting on _____

The deficiencies which were pointed out in the examination have not*) been fixed yet.

There are no*) reasons against continued operation, retesting is not*) required.

The technical expert/surveyor

(Place ,date)

(Signature)

Name

and

address

(in block letters) _____

Job title _____

Employed at _____

Test Report

Of the examination before the first commissioning by technical expert / surveyor
The lifting platform underwent an examination regarding operational readiness on _____

The following/no*) faults found.

Test scope _____

Still pending _____

Partial tests

There are no*) reasons against continued operation, retesting is not*) required.

The technical expert/surveyor

(Place ,date)

(Signature)

Name and address
(in block letters) _____

Job title _____

Employed at _____

Operator or Representative

Deficiencies noted

(Place ,date)

(Signature)

Deficiencies fixed

(Place ,date)

(Signature)

Retesting

The lifting platform underwent retesting on _____

The deficiencies which were pointed out in the examination have not*) been fixed yet.

There are no*) reasons against continued operation, retesting is not*) required.

The technical expert/surveyor

(Place ,date)

(Signature)

Name

and

address

(in block letters) _____

Job title _____

Employed at _____

Test Report

Of the examination before the first commissioning by technical expert / survey or
The lifting platform underwent an examination regarding operational readiness on _____

The following/no*) faults found.

Test scope _____

Still pending _____

Partial tests

There are no*) reasons against continued operation, retesting is not*) required.

The technical expert/surveyor

(Place ,date)

(Signature)

Name and address
(in block letters) _____

Job title _____

Employed at _____

Operator or Representative

Deficiencies noted

(Place ,date)

(Signature)

Deficiencies fixed

(Place ,date)

(Signature)

Retesting

The lifting platform underwent retesting on _____

The deficiencies which were pointed out in the examination have not*) been fixed yet.

There are no*) reasons against continued operation, retesting is not*) required.

The technical expert/surveyor

(Place ,date)

(Signature)

Name

and

address

(in block letters) _____

Job title _____

Employed at _____

Test Report

Of the examination before the first commissioning by technical expert / survey or
The lifting platform underwent an examination regarding operational readiness on _____

The following/no*) faults found.

Test scope _____

Still pending _____

Partial tests _____

There are no*) reasons against continued operation, retesting is not*) required.

The technical expert/surveyor

(Place ,date)

(Signature)

Name and address

(in block letters) _____

Job title _____

Employed at _____

Operator or Representative

Deficiencies noted

(Place ,date)

(Signature)

Deficiencies fixed

(Place ,date)

(Signature)

Retesting

The lifting platform underwent retesting on _____

The deficiencies which were pointed out in the examination have not*) been fixed yet.

There are no*) reasons against continued operation, retesting is not*) required.

The technical expert/surveyor

(Place ,date)

(Signature)

Name

and

address

(in block letters) _____

Job title _____

Employed at _____

Test Report

Of the examination before the first commissioning by technical expert / surveyor
The lifting platform underwent an examination regarding operational readiness on _____

The following/no*) faults found.

Test scope _____

Still pending _____

Partial tests

There are no*) reasons against continued operation, retesting is not*) required.

The technical expert/surveyor

(Place ,date)

(Signature)

Name and address

(in block letters)

Job title

Employed at

Operator or Representative

Deficiencies noted

(Place ,date)

(Signature)

Deficiencies fixed

(Place ,date)

(Signature)

Retesting

The lifting platform underwent retesting on _____

The deficiencies which were pointed out in the examination have not*) been fixed yet.

There are no*) reasons against continued operation, retesting is not*) required.

The technical expert/surveyor

(Place ,date)

(Signature)

Name

and

address

(in block letters)

Job title

Employed at

Test Report

Of the examination before the first commissioning by technical expert / surveyor
The lifting platform underwent an examination regarding operational readiness on _____

The following/no*) faults found.

Test scope _____

Still pending _____

Partial tests _____

There are no*) reasons against continued operation, retesting is not*) required.

The technical expert/surveyor

(Place ,date)

(Signature)

Name and address

(in block letters) _____

Job title _____

Employed at _____

Operator or Representative

Deficiencies noted

(Place ,date)

(Signature)

Deficiencies fixed

(Place ,date)

(Signature)

Retesting

The lifting platform underwent retesting on _____

The deficiencies which were pointed out in the examination have not*) been fixed yet.

There are no*) reasons against continued operation, retesting is not*) required.

The technical expert/surveyor

(Place ,date)

(Signature)

Name

and

address

(in block letters) _____

Job title _____

Employed at _____

Test Report

Of the examination before the first commissioning by technical expert / survey or
The lifting platform underwent an examination regarding operational readiness on _____

The following/no*) faults found.

Test scope _____

Still pending _____

Partial tests

There are no*) reasons against continued operation, retesting is not*) required.

The technical expert/surveyor

(Place ,date)

(Signature)

Name and address
(in block letters) _____

Job title _____

Employed at _____

Operator or Representative

Deficiencies noted

(Place ,date)

(Signature)

Deficiencies fixed

(Place ,date)

(Signature)

Retesting

The lifting platform underwent retesting on _____

The deficiencies which were pointed out in the examination have not*) been fixed yet.

There are no*) reasons against continued operation, retesting is not*) required.

The technical expert/surveyor

(Place ,date)

(Signature)

Name _____ and _____ address
(in block letters) _____

Job title _____

Employed at _____

Test Report

Of the examination before the first commissioning by technical expert / surveyor
The lifting platform underwent an examination regarding operational readiness on _____

The following/no*) faults found.

Test scope _____

Still pending _____

Partial tests

There are no*) reasons against continued operation, retesting is not*) required.

The technical expert/surveyor

(Place ,date)

(Signature)

Name and address

(in block letters) _____

Job title _____

Employed at _____

Operator or Representative

Deficiencies noted

(Place ,date)

(Signature)

Deficiencies fixed

(Place ,date)

(Signature)

Retesting

The lifting platform underwent retesting on _____

The deficiencies which were pointed out in the examination have not*) been fixed yet.

There are no*) reasons against continued operation, retesting is not*) required.

The technical expert/surveyor

(Place ,date)

(Signature)

Name

and

address

(in block letters) _____

Job title _____

Employed at _____

Test Report

Of the examination before the first commissioning by technical expert / survey or

The lifting platform underwent an examination regarding operational readiness on _____

The following/no*) faults found.

Test scope _____

Still pending _____

Partial tests

There are no*) reasons against continued operation, retesting is not*) required.

The technical expert/surveyor

(Place ,date)

(Signature)

Name and address

(in block letters) _____

Job title _____

Employed at _____

Operator or Representative

Deficiencies noted

(Place ,date)

(Signature)

Deficiencies fixed

(Place ,date)

(Signature)

Retesting

The lifting platform underwent retesting on _____

The deficiencies which were pointed out in the examination have not*) been fixed yet.

There are no*) reasons against continued operation, retesting is not*) required.

The technical expert/surveyor

(Place ,date)

(Signature)

Name

and

address

(in block letters) _____

Job title _____

Employed at _____

Alterations and substantial

repairs

Type

Date/Name

[illegible]

--

**Contact Your Nearest Authorized Rotary Parts Distributor
For Genuine Rotary Replacement Parts.
Please see the parts breakdown.**

DATE	REV.	CHANGE MADE
07-10-14	A	New annex manual for SM40/SM40NB/SM40LT release
04-06-15	B	Update the column assembly

BlitzRotary GmbH
Hüfinger Straße 55
D-78199 Bräunlingen



Tel +49.771.9233.0
Fax +49.771.9233.99
info@blitzrotary.com
www.blitzrotary.com

USA: +1.812.273.1622 (Headquarter)
Canada: +1.905.812.9920
United Kingdom: +44.178.747.7711
AustralAsia: +60.3.7660.0285

Latin America/Caribbean: +1.812.273.1622
Middle East/Northern Africa: +49.771.9233.0
Southern Africa: 1.812.273.1622
Brazil: +55.11.4534.1995

