



Annex

4-Post Alignment Lift

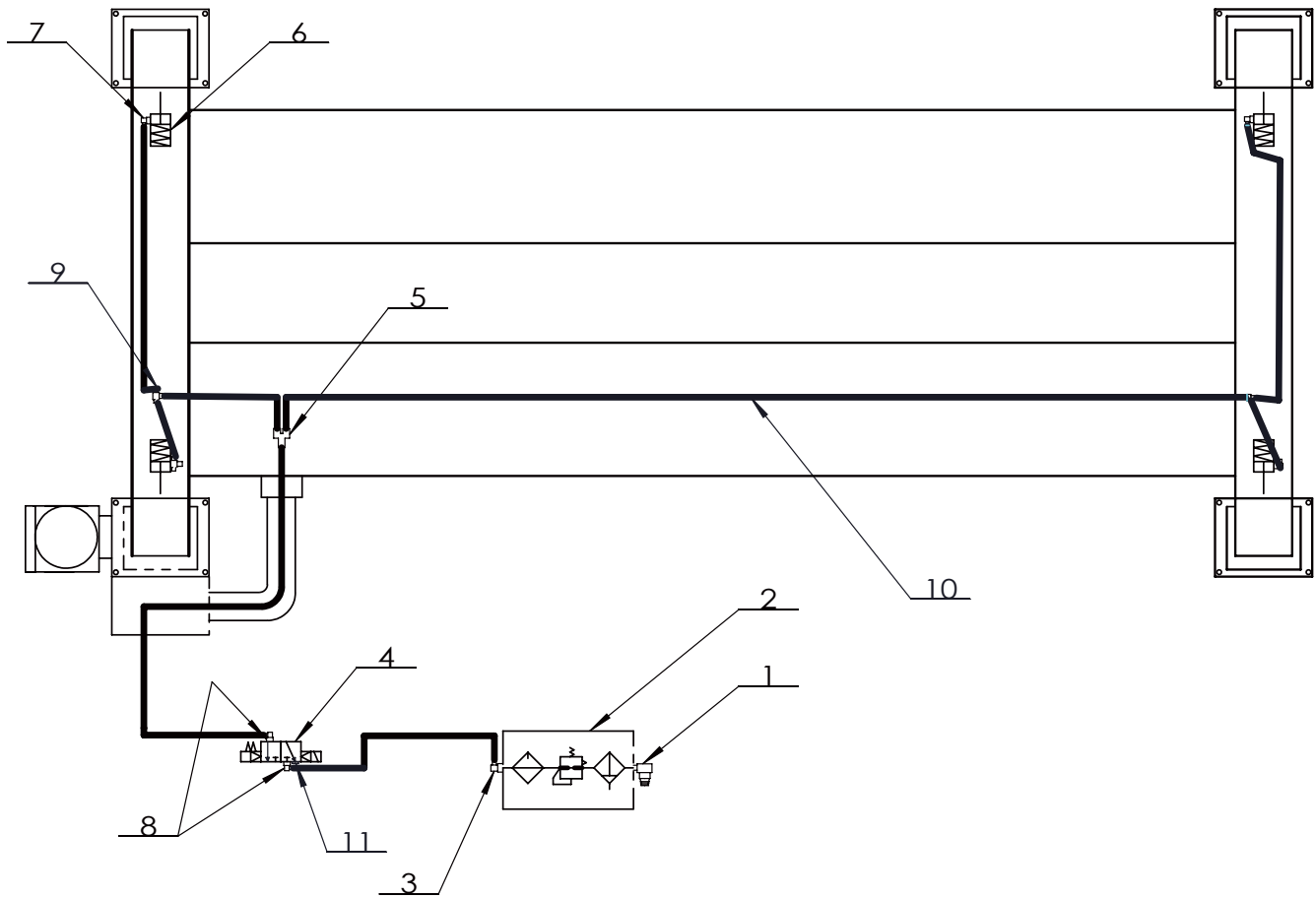
SM65-60/55/51, SM55LT-51

Table of Contents

Pneumatic circuit diagram.....	2
Electric wiring diagram	5
Hydraulic circuit diagram	8
Parts break down.....	12
Spare parts list	40

Item	PartNo.	Description	Oty	Remark
1	EPL8-N02	Air fitting	1	
2	S130080	Air maintenance	1	
3	EPL6-N02	Air Fitting	1	
4	3V210-06AC24V	Exchange valve	2	
5	PSV-01	Silencer	2	
6	SPE-6	Air Fitting	3	
7	SPY-6	Air Fitting	3	
8	EPL6-N01	Fitting	4	
9	S130061	Air cylinder	4	
10	CJPB-15*10	Air cylinder	2	
11	SPL6-01	Air fitting	4	
12	SPL6-M5	Air fitting	2	
13	EPL6-G02	Fitting	1	
14	SM40-9801-2	Air line (L=15000mm)	1	for one lift
15		Blue PU Air line (L=10000mm)	1	for one lift

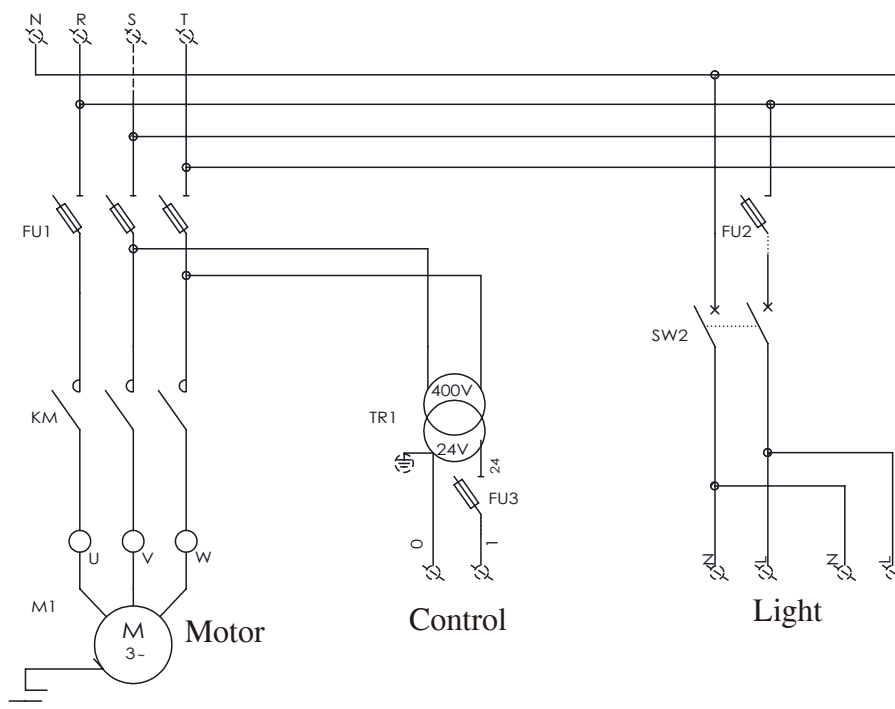
2.The Pneumatic circuit diagram for SM65-60/55/51



Item	PartNo.	Description	Oty	Remark
1	EPL8-N02	Air fitting	1	
2	S130080	Air maintenance	1	
3	EPL6-N02	Air Fitting	1	
4	3V210-06AC24V	Exchange valve	1	
5	SPE-6	Fitting	3	
6	S130061	Air cylinder	4	
7	EPL6-N01	Fitting	4	
8	SPL6-01	Air fitting	2	
9	SPY-6	Air fitting	2	
10	NSM40-9801-2	Air line($\phi 6$) L=15000	1	for one lift
11	PSV-01	Silencer	1	

II. Electric wiring diagram For SM65-60/55/51, SM55LT-51

1. An Electric schematic diagram for SM65&SM55LT



2. Two Electric schematic diagram for SM55LT-51

Table for electrical components

SB7	Oil supplementary valve	FU1	Fuse 16A
SB2	Up button	FU2	Fuse 2A
SB3	Down button	FU3	Fuse 6A
SB4	Padlock button	KM1	Contactor
SB8	Emergency Button of help	QS1	Main switch
SB5	Final lowering button	SQ1	Broken cable switch
SA1	Selector switch aux/main	SQ2	Slack cable switch
KA1-KA3	Intermediate relay	SQ3	Low switch
KT1	Time relay	PH	Photoelectric switch
HZ1	Buzzer	EV1	Oil relief valve
EV2	Access valve /aux	EV12	Air valve /aux
EV3	Access valve /main	EV13	Air valve/main

3. Two Electric schematic diagram for SM65-60/55/51

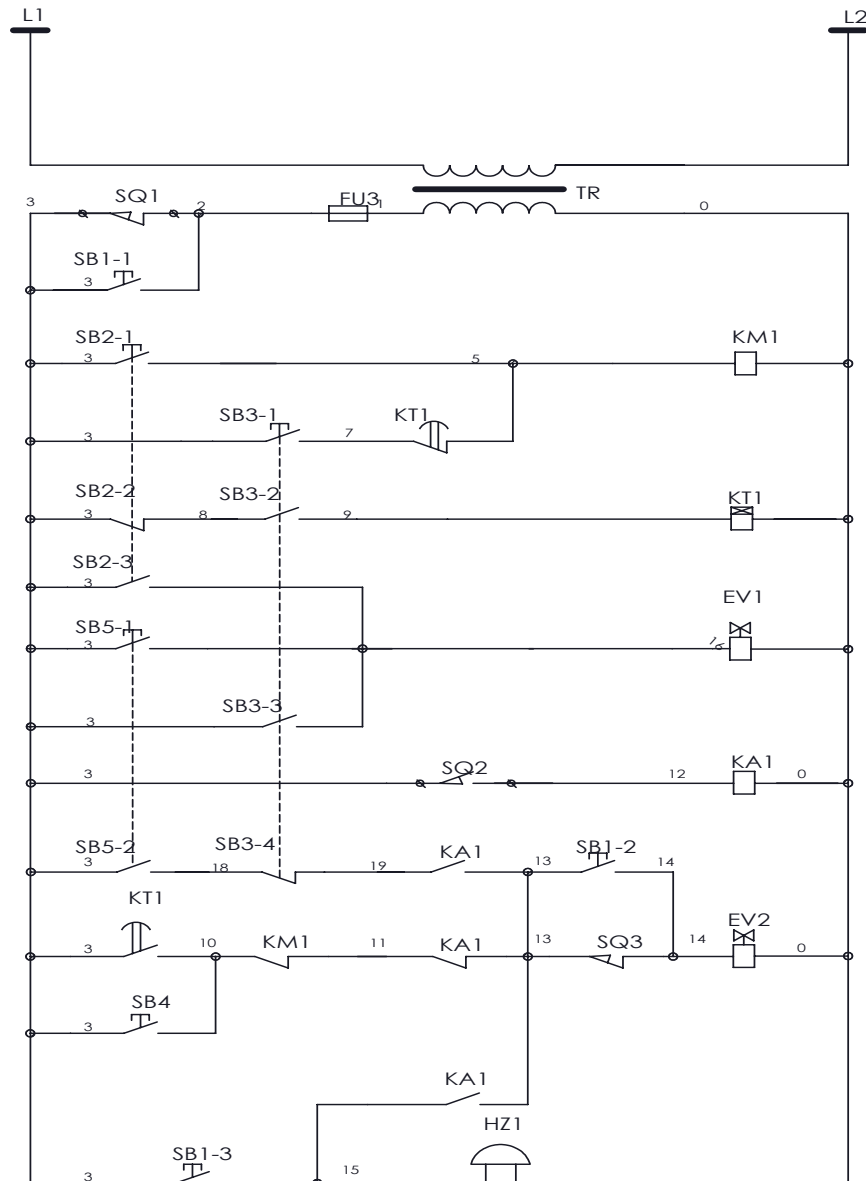


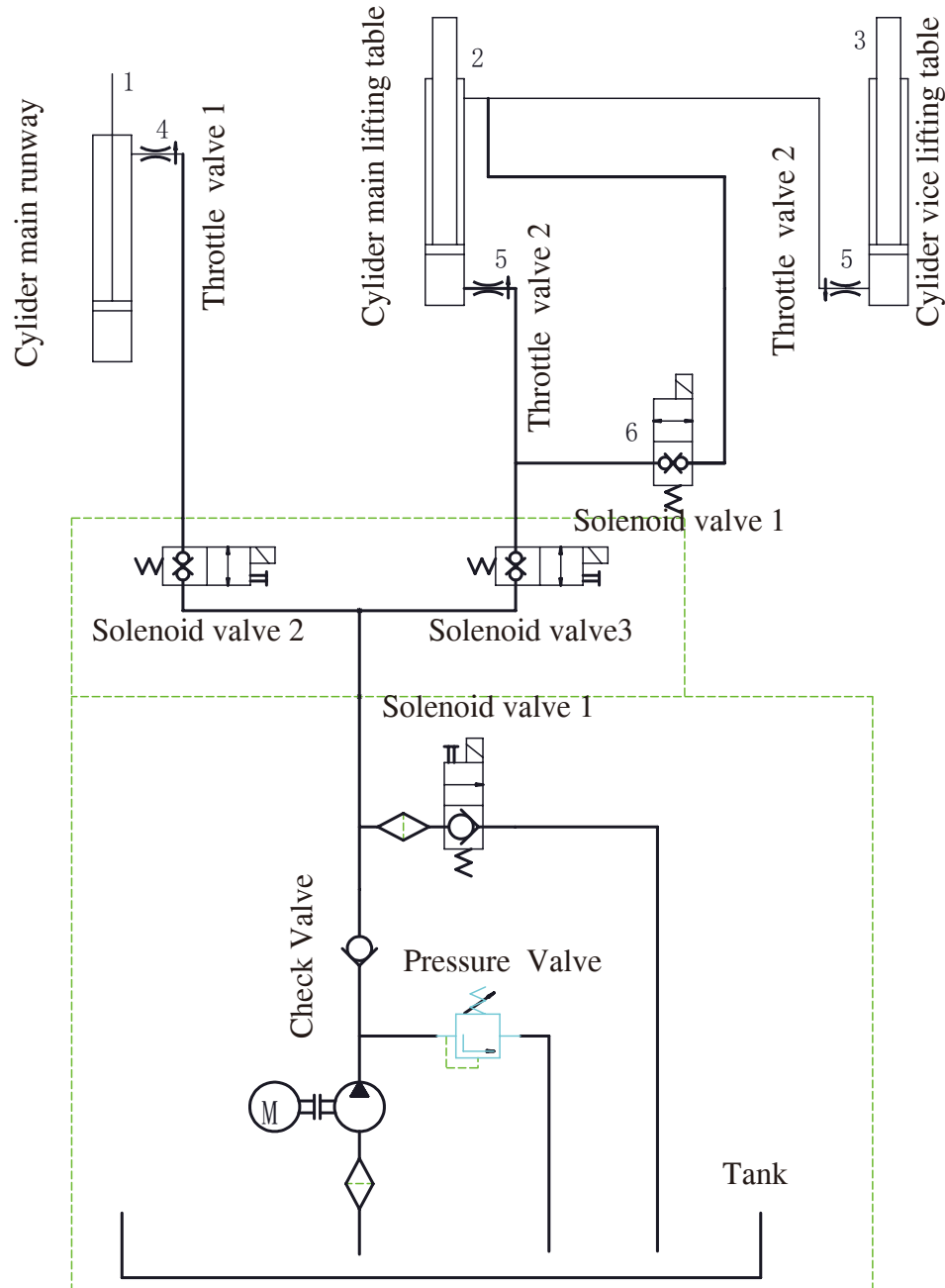
Table for electrical components

SB1	Emergency button for help	FU1	Fuse 16A
SB2	Up button	FU2	Fuse 2A
SB3	Down button	FU3	Fuse 6A
SB4	Padlock button	KM1	Contactor
SB5	Final lowering button	QS1	Main switch
HZ1	Buzzer	SQ1	Broken cable switch
KT1	Timer relay	SQ3	Slack cable switch
KA1	Intermediate relay	SQ2	Low switch

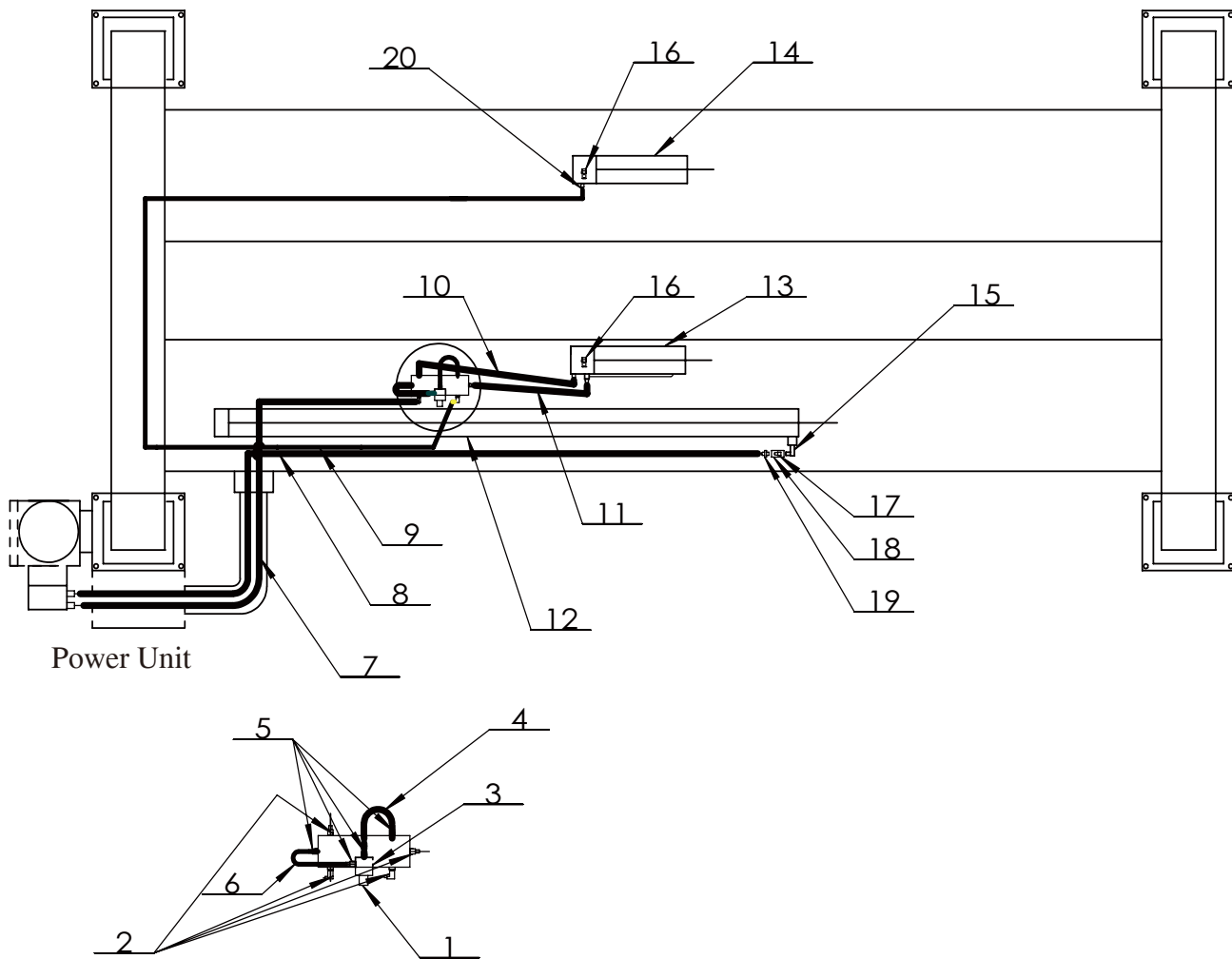
III. Hydraulic circuit diagram

For SM65-60/55/51,SM55LT-51

1. The Hydraulic circuit schema for SM55LT-51

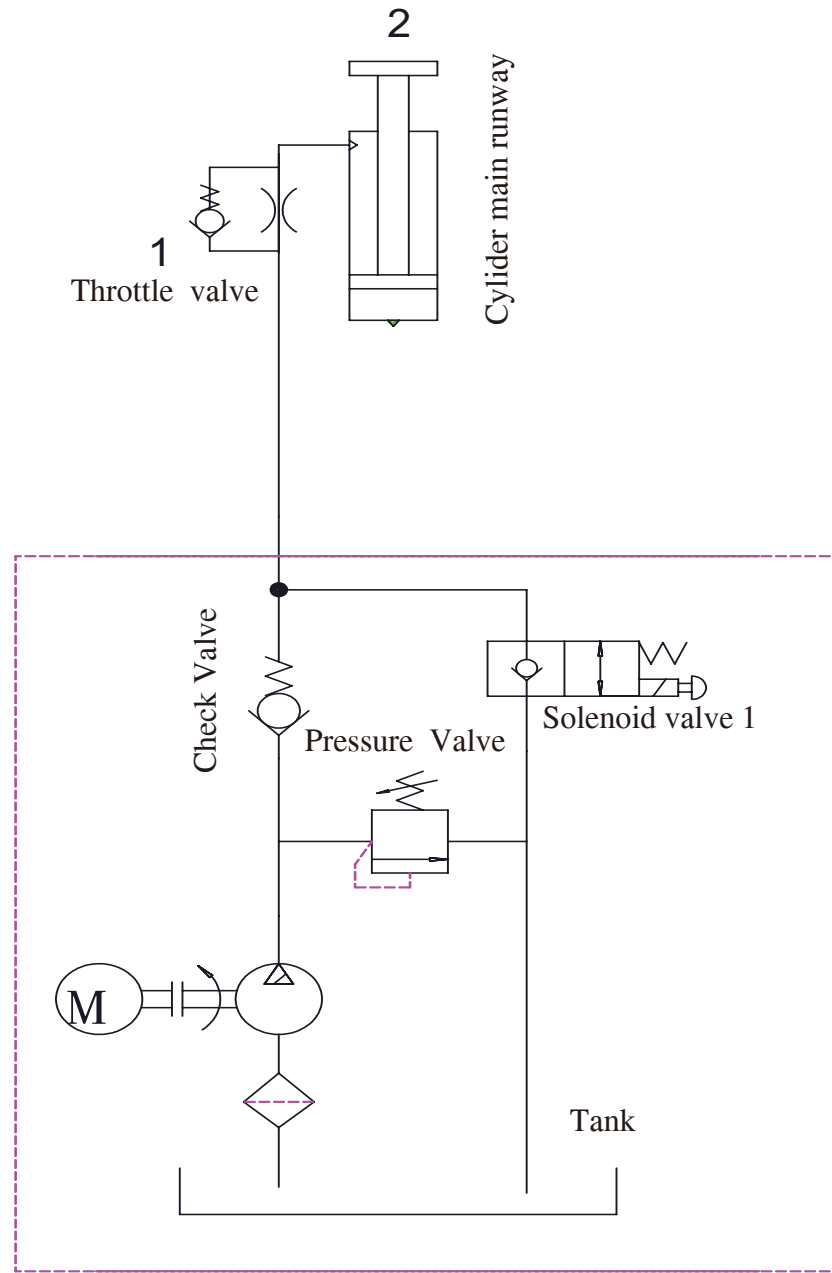


Item	PartNo.	Description	Qty	Remark
1	SM65-9100	Cylinder for main runway	1	
2	R520-ZY1	Cylinder for main lifting table	1	
3	R520-ZY2	Cylinder for vice lifting table	1	
4.1	IFC-6T-10	Throttle valve	1	
4.2	I12-9802-2.1	Valve block	1	
5	XG130077	Throttle valve 2	2	in the cylinder
6	LSV-08-2NCSP-LM-2H	Solenoid valve 1	1	in the runway

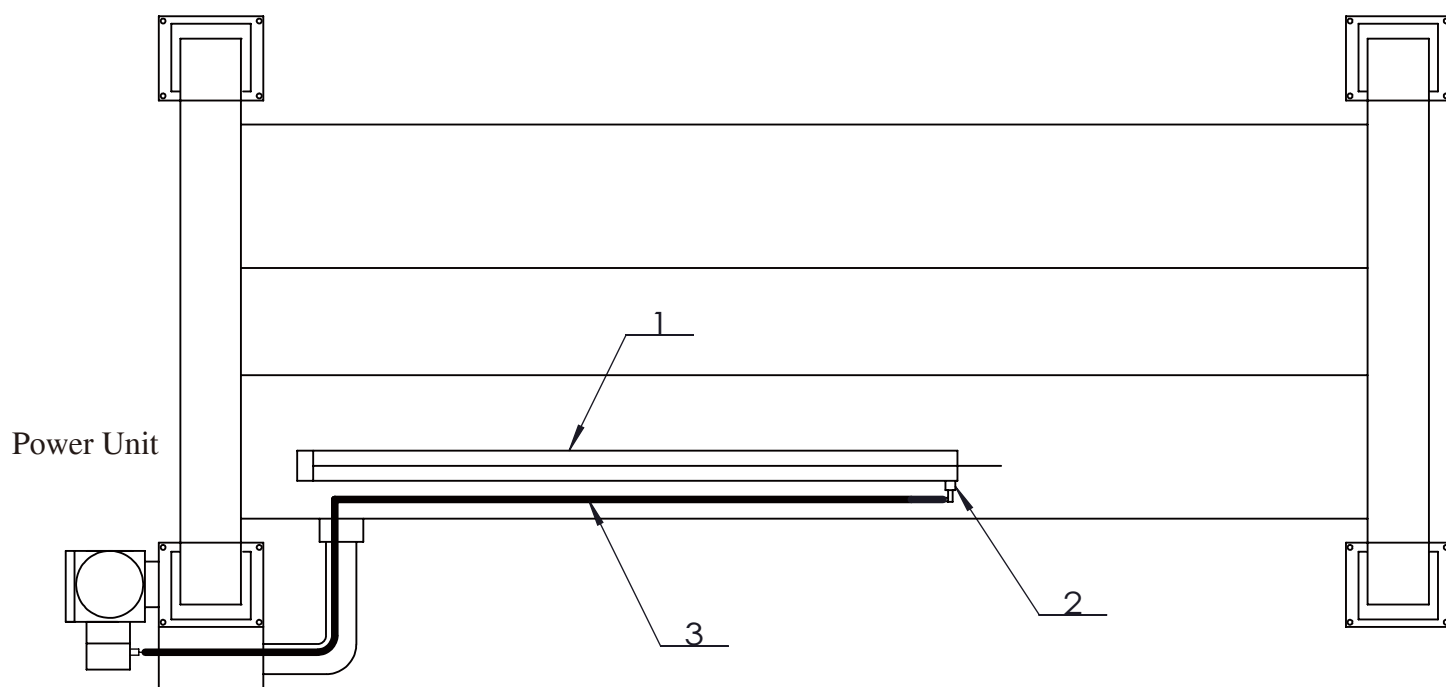


Item	PartNo.	Description	Oty	Remark
1	LSV-08-2NCSP-LM-2H	Solenoid valve	1	DC24V
2	WR-001	Fitting	4	
3	PV4-9102	Valve block	1	
4	PV4-9104	Steel hose	1	
5	E10	Fitting	4	
6	PV4-9103	Steel hose	1	
7	SM50-9801-2	Hose (3630mm)to lifting table	1	
8	SM50-9801-4	Hose (4500mm) to main lift	1	
9	SM50-9801-1	Hose (5570mm)	1	
10	SM50-9801-3	Hose (2000mm)	1	
11	SM50-9801-5	Hose (1900mm)	1	
12	SM65-9100	Main cylinder	1	
13	R520-ZY1	Main cylinder of lifting table	1	
14	R520-ZY2	Vice cylinder og lifting table	1	
15	SM55-9802-1	Fitting	1	
16	XG130077	Throttle valve	2	In the cylinder
17	IFC-6T-10	Throttle valve	1	
18	I12-9802-2.1	Valve block	1	
19	SVW6353-9802-1	Fitting	1	
20	C30N-9802-1	Fitting	3	

2. The Hydraulic circuit schema for SM65-60/55/51

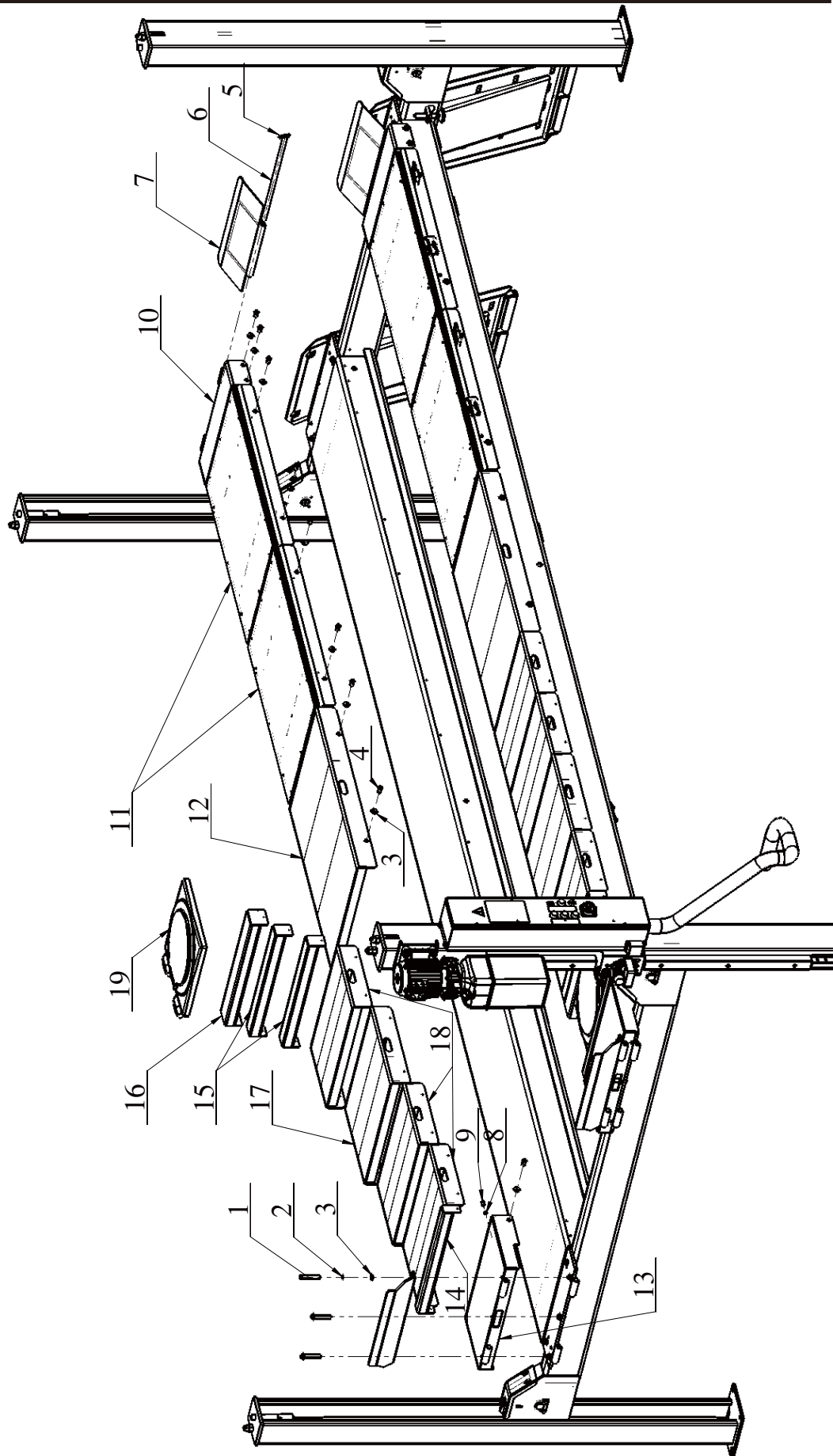


Item	PartNo.	Description	Qty	Remark
1	SM60-9200	Throttle valve	1	
2	SM65-9100	Cylinder	1	



Item	PartNo.	Description	Oty	Remark
1	SM65-9100	Cylinder	1	
2	SM60-9200	Throttle valve	1	
3	SM65-9801-2	Hose	1	for SM65-60
	SM65-9801-3	Hose	1	for SM65-55
	SM65-9801-4	Hose	1	for SM65-51

Annex IV. Parts Break Down For SM65-60/55/51, SM55LT-51

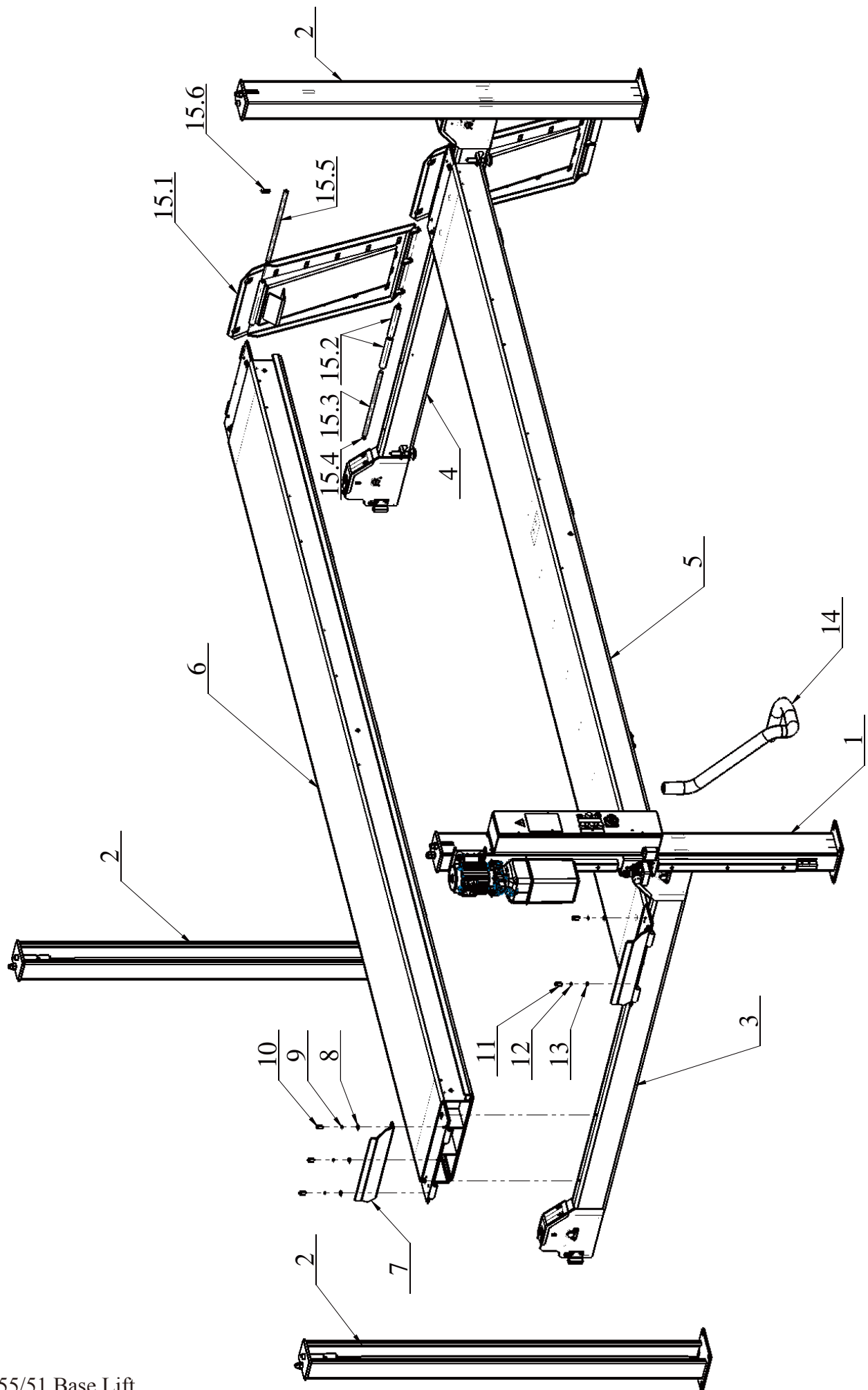


PB-SM65-1

SM65-60/55/51
with Alignment kit Lift

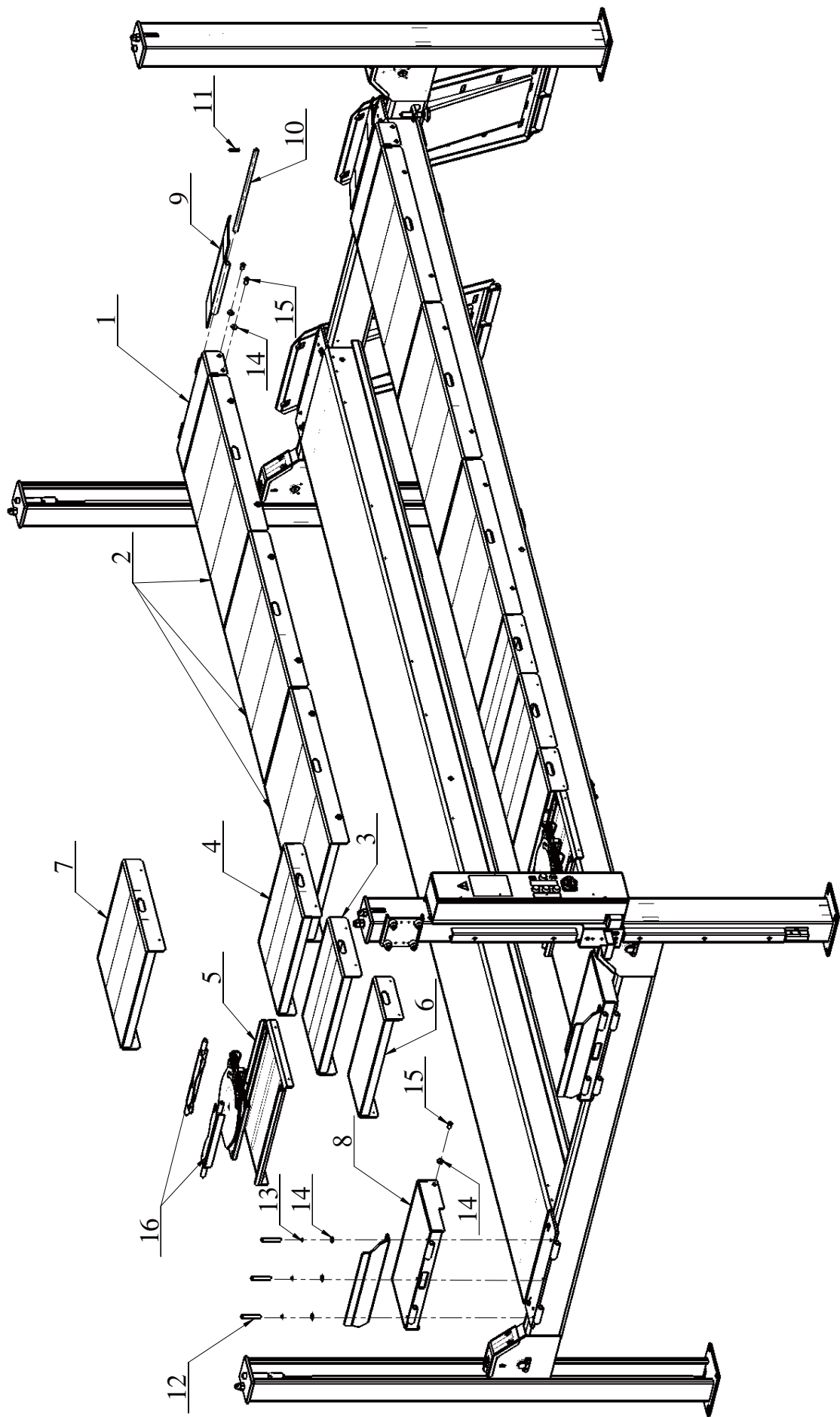
Detail for PB-SM65-1

	PartNo.	Description	Qty
1	B12-10*90	Hexagon bolt M10*90 10.9 grand	6
2	B40-10	Spring washer $\phi 10$	6
3	B42-10	Big flat washer $\phi 10$	38
4	B23-10*30	Cross recessed pan head screw M10*30	32
5	B52-5*40	Cotter pin $\phi 5*40$	4
6	MOT40-1503	Shaft	2
7	SM60-1338G	Stop runway weldment	2
8	B30-8	Nut M8	6
9	B10-8*40	Hexagon bolt M8*40	6
10	SM65-2300G	Fixed weldment	2
11	SM65-2000G	Slip plates assembly	4
12	SM65-2400G	Long fixed weldment (1050mm)	2
13	SM65-2700B	End fixed weldment	2
14	SM55LT-51-2200	50mm filler weldment	2
15	SM65-60-2500	70mm filler weldment	4
16	SM65-60-2600	100mm filler weldment	2
17	SM65-2600G	500mm filler weldment for SM65-51	0
		500mm filler weldment for SM65-55	0
		500mm filler weldment for SM65-60	2
18	SM65-2500G	400mm filler weldment for SM65-51	4
		400mm filler weldment for SM65-55	6
		400mm filler weldment for SM65-60	6
19	Turn table (50mm height)	Optional accessories(just for show)	0



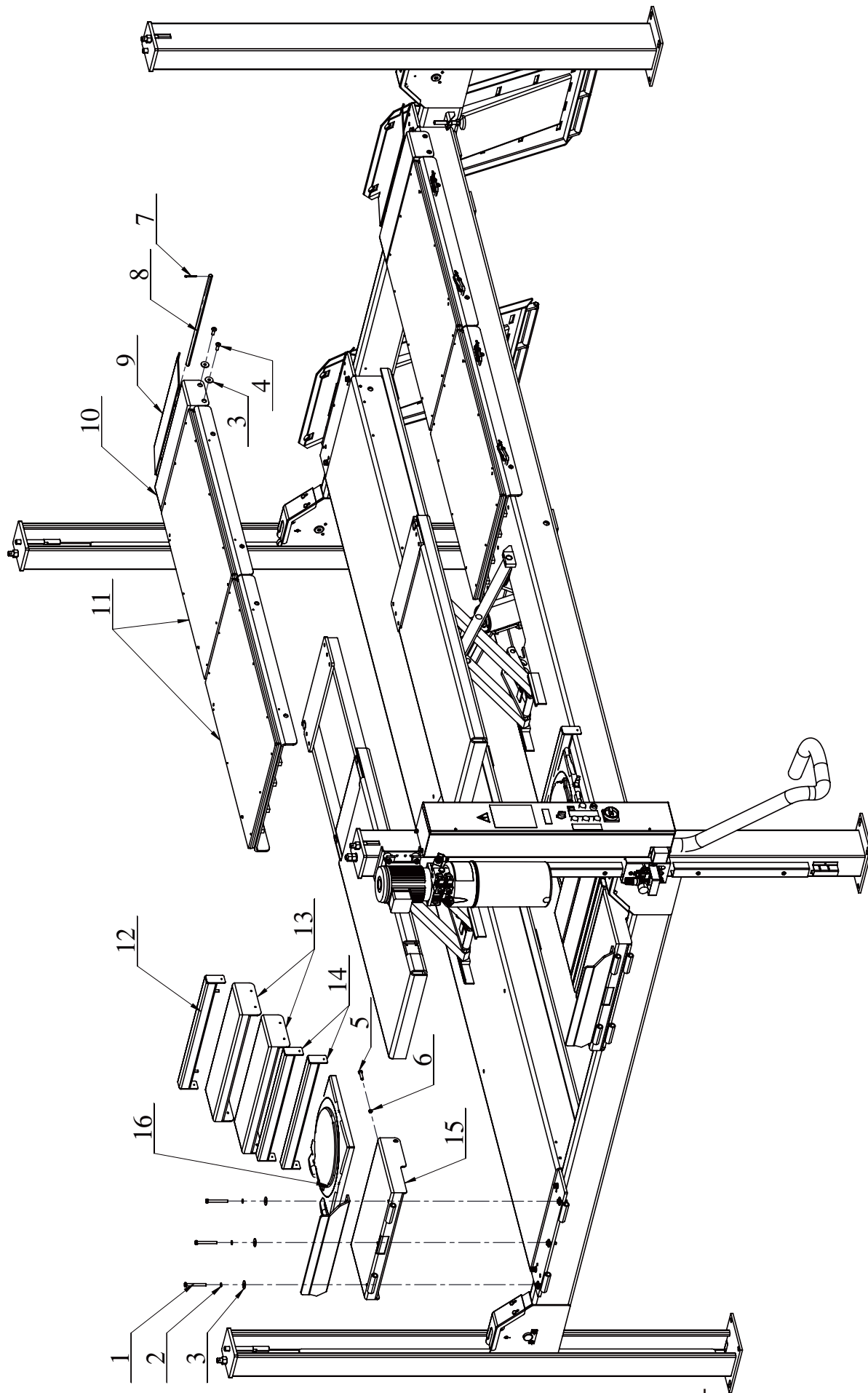
Detail for PB-SM65-2

	PartNo.	Description	Qty
1	MOT40-1100	PU column weldment	1
2	MOT40-1200	Vice column weldment	3
3	SM65-60-1400ZP	PU crossbeam assembly	1
	SM65-60-1400	PU crossbeam weldment	1
4	SM65-60-1500ZP	Vice crossbeam assembly	1
	SM65-60-1500	Vice crossbeam weldment	1
5	SM65-60-1100ZP	Mian runway assembly(SM65-60)	1
	SM65-60-1100	Mian runway weldment(SM65-60)	
	SM65-55-1100N	Mian runway assembly(SM65-55)	1
	SM65-55-1100N	Mian runway weldment(SM65-55)	
	SM65-51-1100N	Mian runway assembly(SM65-51)	1
	SM65-51-1100N	Mian runway weldment(SM65-51)	
6	SM65-60-1200	Vice runway weldment(SM65-60)	1
	SM65-55-1200N	Vice runway weldment(SM65-55)	1
	SM65-51-1200N	Vice runway weldment(SM65-51)	1
7	SM65-1131G	Wheel stop	1
8	B42-10	Big flat washer $\phi 10$	6
9	B40-10	Spring washer $\phi 10$	6
10	B12-10*30	Hexagon bolt M10*30 10.9 grand	6
11	B12-12*30	Hexagon bolt M12*30 10.9 grand	8
12	B40-12	Spring washer $\phi 12$	8
13	B41-12	Flat washer $\phi 12$	8
14	B91-2*1600	Flxeible pipe	1
15	MOT40-1500ZP	Drive on ramp assembly	2
15.1	MOT40-1500	Ramp weldment	2
15.2	FC5992Y	Nylon roller	4
15.3	FC5991Y	Shaft	2
15.4	B60-16	Circlips for shaft $\phi 16$	4
15.5	MOT40-1503	Shaft	2
15.6	B52-5*40	Cotter pin $\phi 5 \times 40$	4



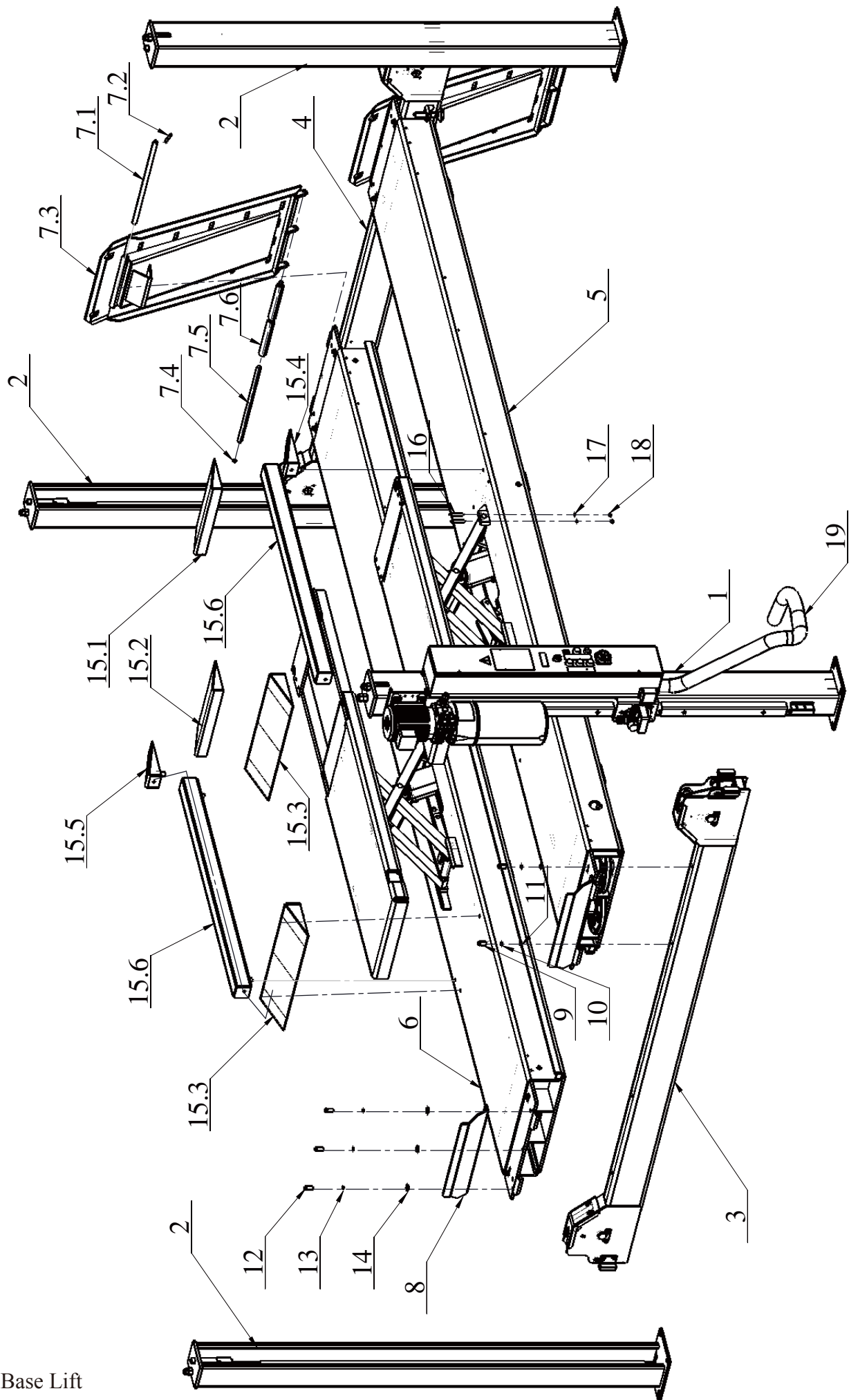
Detail for PB-SM65-3

	PartNo.	Description	Qty
1	SM65-2300G	End fixed filler weldment	2
2	SM65-2400G	Long fixed filler weldment	6
3	SM65-2500G	400mm Filler weldment(SM65-60)	2
		400mm Filler weldment(SM65-55)	2
		400mm Filler weldment(SM65-51)	0
4	SM65-2600G	400mm Filler weldment(SM65-60)	2
		400mm Filler weldment(SM65-55)	0
		400mm Filler weldment(SM65-51)	0
5	SM65-60-2100	Baseplate weldment	2
6	SM65-60-2200	290mm Filler weldment	2
7	SM65-60-2300	620mm Filler weldment	1
8	SM65-2700B	End fixed filler weldment	2
9	SM60-1338G	Wheel stop	2
10	MOT40-1503	Shaft	2
11	B52-5*40	Cotter pin $\phi 5 \times 40$	4
12	B12-10*90	Hexagon bolt M10*90 10.9 grand	6
13	B40-10	Spring washer $\phi 10$	6
14	B42-10	Big flat washer $\phi 10$	42
15	B23-10*30	Cross recessed pan head screw M10*30	36
16	FC7117Y	Bridge of turn table	4
17	Turn table (38mm height)	Optional accessories (just for show)	0

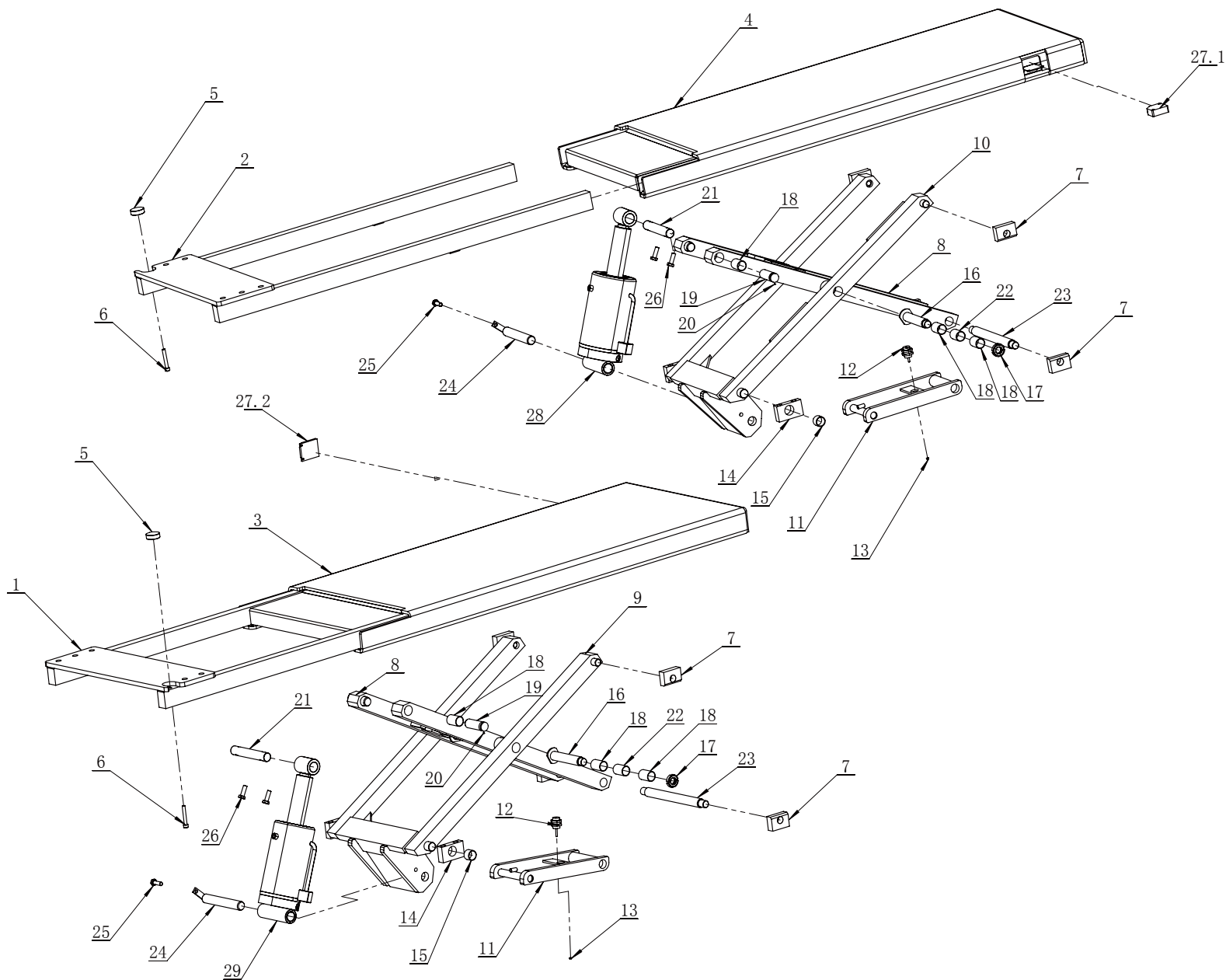


Detail for PB-SM65-4

	PartNo.	Description	Qty
1	B12-10*90	Hexagon bolt M10*90 10.9grand	6
2	B40-10	Spring washer ϕ 10	6
3	B42-10	Big flat washer ϕ 10	34
4	B23-10*30	Cross recessed pan head screw M10*30	28
5	B10-8*40	Hexagon bolt M8*40	6
6	B30-8	Nut M8	6
7	B52-5*40	Cotter pin ϕ 5*40	4
8	MOT40-1503	Shaft	2
9	SM60-1338G	Stop runway weldment	2
10	SM55LT-51-2300G	Fixed filler weldment	2
11	SM65-2000G	Slip plates assembly	4
12	SM55LT-51-2100	Fixed filler weldment	2
13	SM55LT-51-2400	200mm filler weldment	4
14	SM55LT-51-2200	50mm filler weldment	4
15	SM55LT-51-2500G	End fixed weldment	2
16	Turn table (50mm height)	Optinal accessories (just for show)	2
17	SM65-60-2500	70mm filler weldment(not show)	2
18	SM65-60-2600	100mm filler weldment (not show)	2



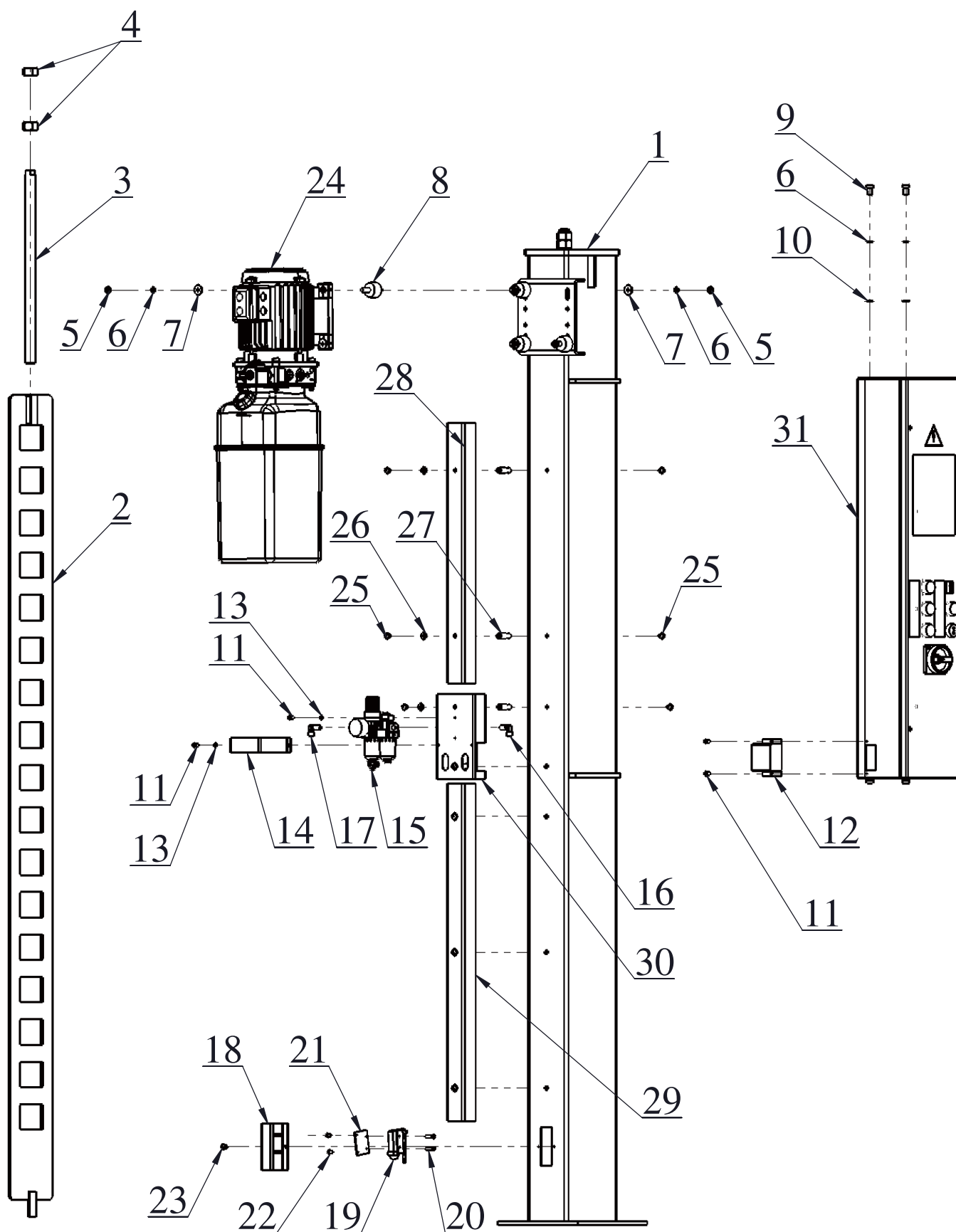
Detail for PB-SM65-5			
	PartNo.	Description	Qty
1	MOT40-1100B	PU column weldment	1
2	MOT40-1200	Vice column weldment	3
3	SM65-60-1600ZP	PU crossbeam assembly	1
	SM65-60-1600	PU crossbeam weldment	
4	SM65-60-1500ZP	Vice crossbeam assembly	1
	SM65-60-1500	Vice crossbeam weldment	
5	SM55LT-51-1000NZP	Main runway assembly with lifting table	1
	SM55LT-51-1100NZP	Main runway assembly(no lifting table)	
	SM55LT-51-1100N	Main runway weldment	
6	SM55LT-51-1200NZP	Vice runway assembly with lifting table	1
	SM55LT-51-1200N	Vice runway weldment(no lifting table)	
7	MOT40-1500ZP	Ramp assembly	2
7.1	MOT40-1503	Shaft	2
7.2	B52-5*40	Cotter pin $\phi 5 \times 40$	4
7.3	MOT40-1500	Ramp weldment	2
7.4	B60-16	Circlips for shaft $\phi 16$	4
7.5	FC5991Y	shaft	2
7.6	FC5992Y	Nylon tube	4
8	SM65-1131G	Wheel stop	2
9	B12-12*30	Hexagon bolt M12*30 10.9 galvanize	8
10	B40-12	Lock washer $\phi 12$	8
11	B41-12	Flat washer $\phi 12$	8
12	B12-10*30	Hexagon bolt M10*30 10.9 galvanize	6
13	B40-10	Lock washer $\phi 10$	6
14	B41-10	Flat washer $\phi 10$	6
15	LRMP-SM55LT	Ramp kit for lifting table	1
15.1	SM55LT-51-1800-1	Lifting table ramp weldment	1
15.2	SM55LT-51-1800-2	Lifting table ramp weldment	1
15.3	SM55LT-51-1800-3	Lifting table ramp weldment	2
15.4	SM55LT-51-1800-4	Lifting table ramp weldment	1
15.5	SM55LT-51-1800-4DC	Lifting table ramp weldment	1
15.6	SM55LT-51-1800-5	Lifting table ramp weldment	2
16	B202-8*60	Hexagon socket cap screw M8*60 8.8grand	4
17	B41-8	Flat washer $\phi 8$	4
18	B33-8	Nylon lock nut M8	4
19	B91-2*1600	Flexible pipe	1



Lifting table assembly for SM55LT-51

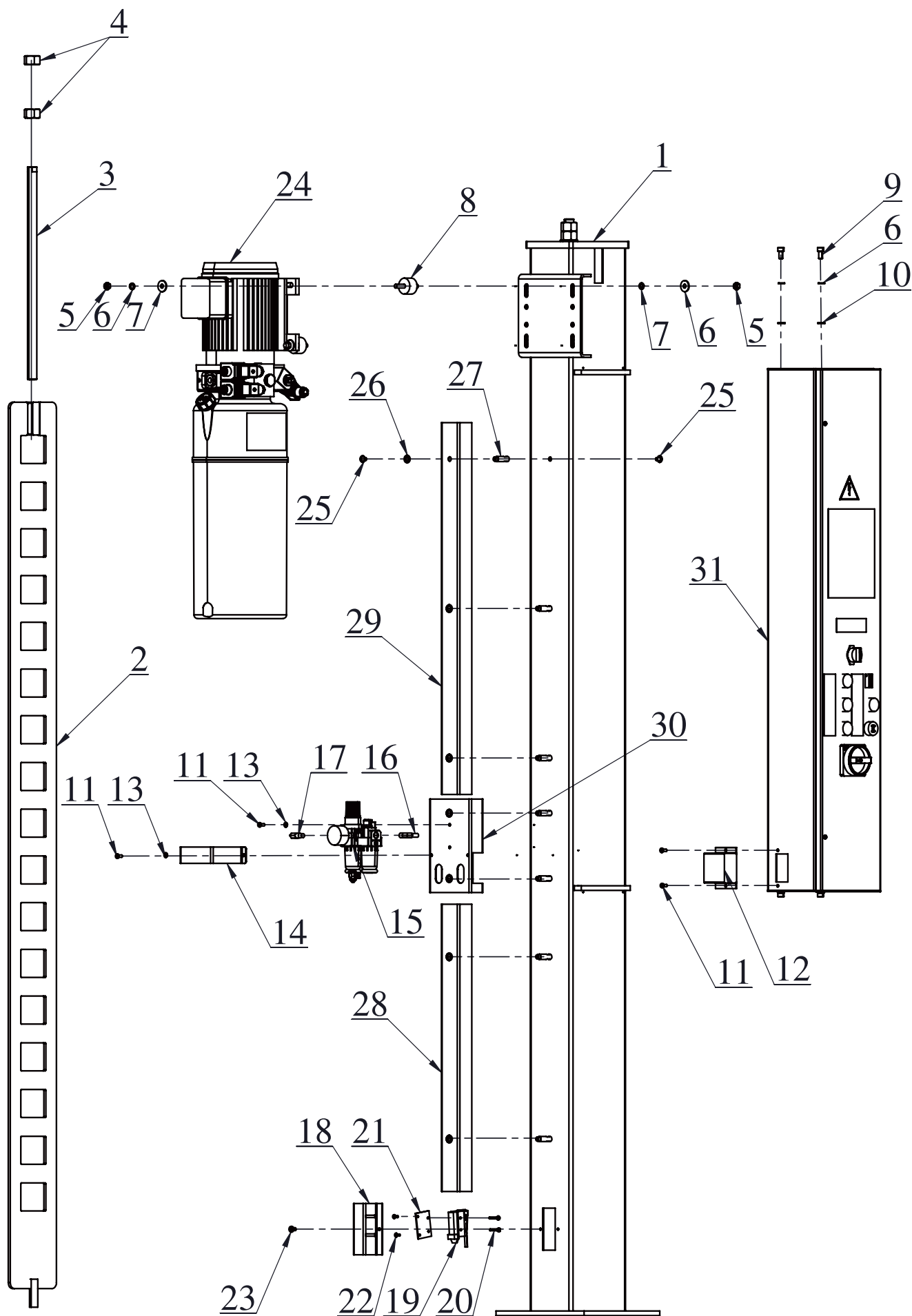
Detail for PB-SM65-6

	PartNo.	Description	Qty
1	SM55LT-51-1700	Extension arm weldment 1	1
2	SM55LT-51-1700DC	Extension arm weldment2	1
3	SM55LT-51-1600	Lifting table weldment 1	1
4	SM55LT-51-1600DC	Lifting table weldment2	1
5	SM55LT-51-1705	Limit handle	2
6	B20-8*55	hexagon socket cap screws M8*55	2
7	SM55LT-51-1005	Slider block	8
8	SM55LT-51-1500	Inner Scissor weldment	2
9	SM55LT-51-1400A	Outside scissor weldment A	1
10	SM55LT-51-1400B	Outside scissor weldment B	1
11	SM55LT-51-1900	Lock system weldment	2
12	CJPB-15*10	Air cylinder	2
13	B35-5	Cap nut M5	2
14	SM55LT-51-1001	Fixed block	2
15	B78-2520	Bearing SF-1 2520	4
16	SM55LT-51-1003	Shaft	4
17	XG130007	Nylon Lock nut	4
18	B78-2540	Bearing SF-1 2540	12
19	SM55LT-51-1007	Shaft	4
20	B22-8*16	Six pyramid end screw set M8*16	4
21	SM55LT-51-1015	Shaft	2
22	B78-2530	Bearing SF-1 2530	
23	SM55LT-51-1006	Shaft	2
24	SM55LT-51-1008	Shaft for cylinder	2
25	B10-8*20	Hexagon bolt t M8*20	2
26	B11-10*35	Hexagon bolt M10*35 8.8 grand	4
27	LRK-5050-115	Optoelectronic switch kit	1
27.1	LRK-5050-115-1	Optoelectronic Switch	1
27.2	LRK-5050-115-2	Switch reflector	1
28	R520-ZY1	Main hydraulic cylider	1
29	R520-ZY2	Vice hydraulic cylider	1



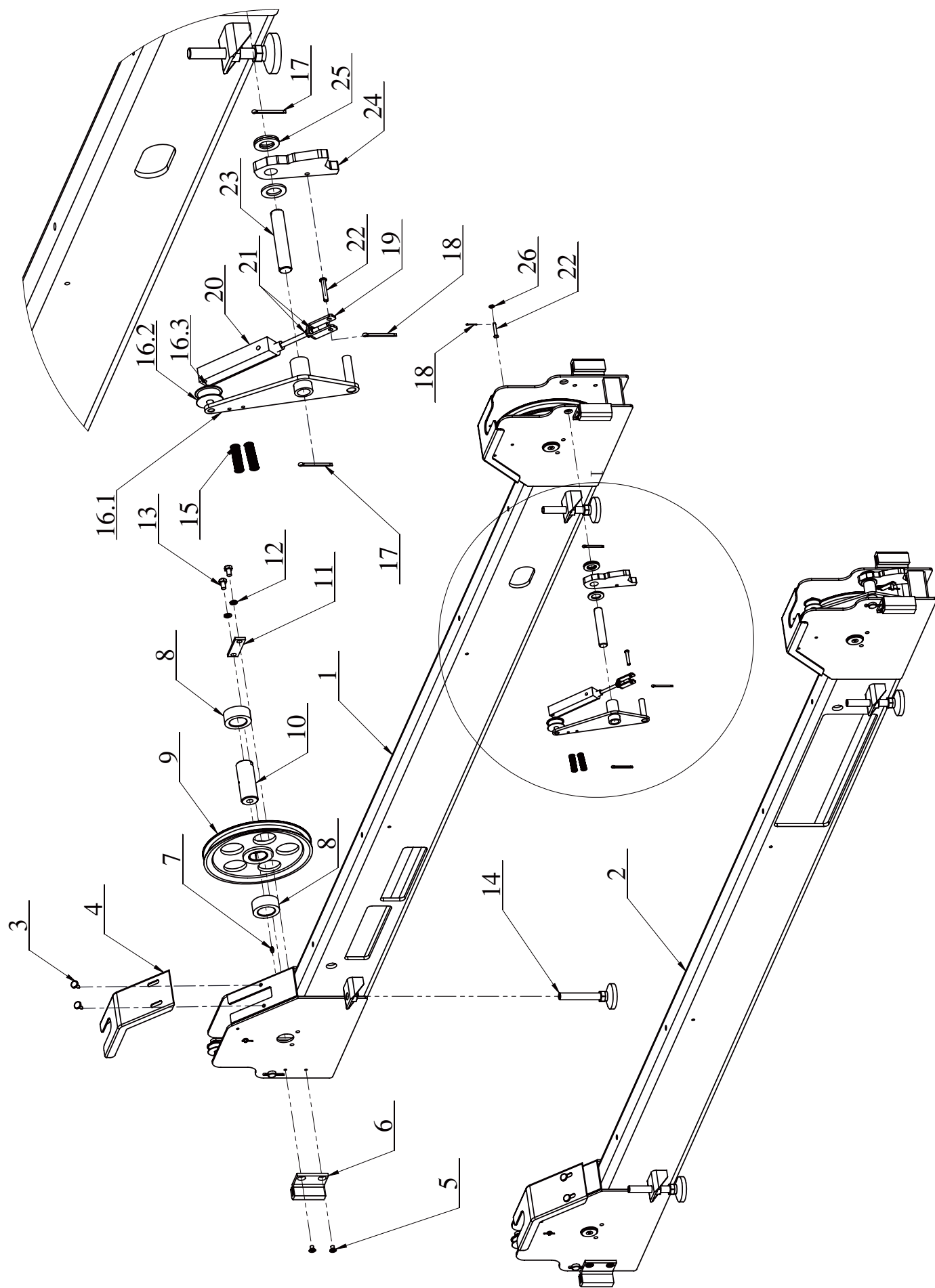
Detail for PB-SM65-7

	PartNo.	Description	Qty
1	MOT40-1100	PU columnweldment	1
2	MOT40-1300	Latch bar weldment	1
3	MOT40-1303	Bolt	1
4	B30-20	Nut M20	2
5	B30-8	Nut M8	8
6	B40-8	Lock washer $\phi 8$	12
7	B42-8	Big washer $\phi 8$	8
8	PV-2005	Power unit bolt	4
9	B20-8*16	Hexagon socket cap screwsM8*16	4
10	B41-8	Flat washer $\phi 8$	4
11	B23-5*12	Cross recessed pan head screwM5*12	2
12	MOT40-1002	Cover plate	1
13	B41-5	Flat washer $\phi 5$	4
14	MOT40-1003	Retainer	1
15	S130080	Air maintance	1
16	EPL6-N02	Fitting	1
17	EPL8-N02	Fitting	1
18	MOT40-1001	Cover	1
19	AZ-7120	Limit switch	1
20	B23-4*25	Cross recessed pan head screw M4*25	2
21	PV4-1017	switch holder	1
22	B23-4*10	Cross recessed pan head screwM4*10	2
23	B23-4*8	Cross recessed pan head screw M4*8	2
24	PU	Power unit	1
25	41659	Hexagon socket bolts with flange M6*10	14
26	G3T-1005	Rubber washer	7
27	G3T-1004	Stud	7
28	MOT40-1104G	Plastic cover(615mm)	1
29	MOT40-1003G	Plastic cover(796mm)	1
30	MOT40-1105	Base plate for air maintance	1
31	MOT40-1400	Control box assembly	1



Detail for PB-SM65-8

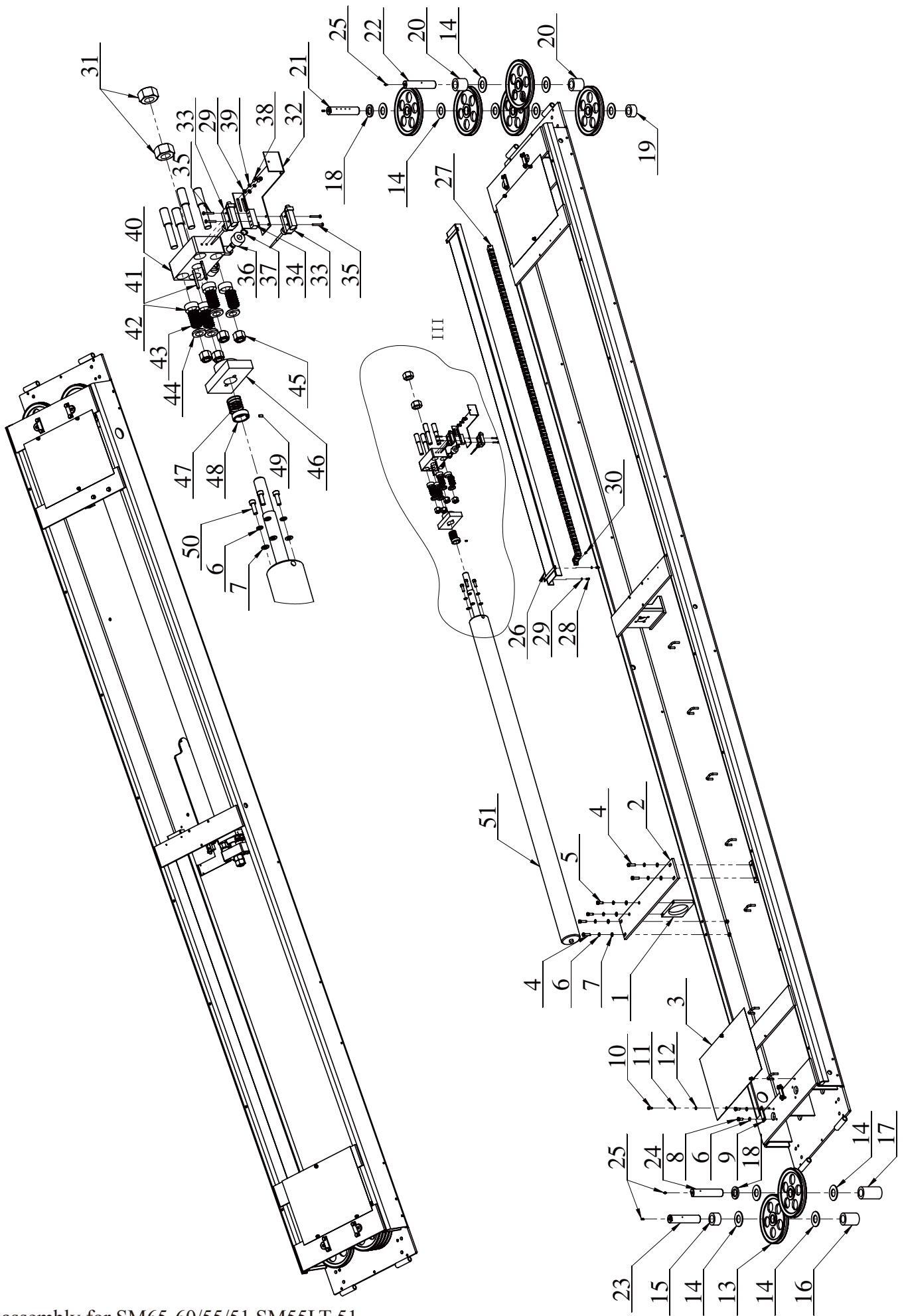
	PartNo.	Description	Qty
1	MOT40-1100B	PU columnweldment	1
2	MOT40-1300	Latch bar weldment	1
3	MOT40-1303	Bolt	1
4	B30-20	Nut M20	2
5	B30-8	Nut M8	8
6	B40-8	Lock washer $\phi 8$	12
7	B42-8	Big washer $\phi 8$	8
8	PV-2005	Power unit bolt	4
9	B20-8*16	Hexagon socket cap screwsM8*16	4
10	B41-8	Flat washer $\phi 8$	4
11	B23-5*12	Cross recessed pan head screwM5*12	2
12	MOT40-1002	Cover plate	1
13	B41-5	Flat washer $\phi 5$	4
14	MOT40-1003	Retainer	1
15	S130080	Air maintance	1
16	EPL6-N02	Fitting	1
17	EPL8-N02	Fitting	1
18	MOT40-1001	Cover	1
19	AZ-7120	Limit switch	1
20	B23-4*25	Cross recessed pan head screw M4*25	2
21	PV4-1017	switch holder	1
22	B23-4*10	Cross recessed pan head screwM4*10	2
23	B23-4*8	Cross recessed pan head screw M4*8	2
24	PU	Power unit	1
25	41659	Hexagon socket bolts with flange M6*10	14
26	G3T-1005	Rubber washer	7
27	G3T-1004	Stud	7
28	MOT40-1104G	Plastic cover(615mm)	1
29	MOT40-1003G	Plastic cover(796mm)	1
30	MOT40-1105	Base plate for air maintance	1
31	MOT40-1400B	Control box assembly for LT lift	1



Crossbeam for SM65-60/55/51, SM55LT-51

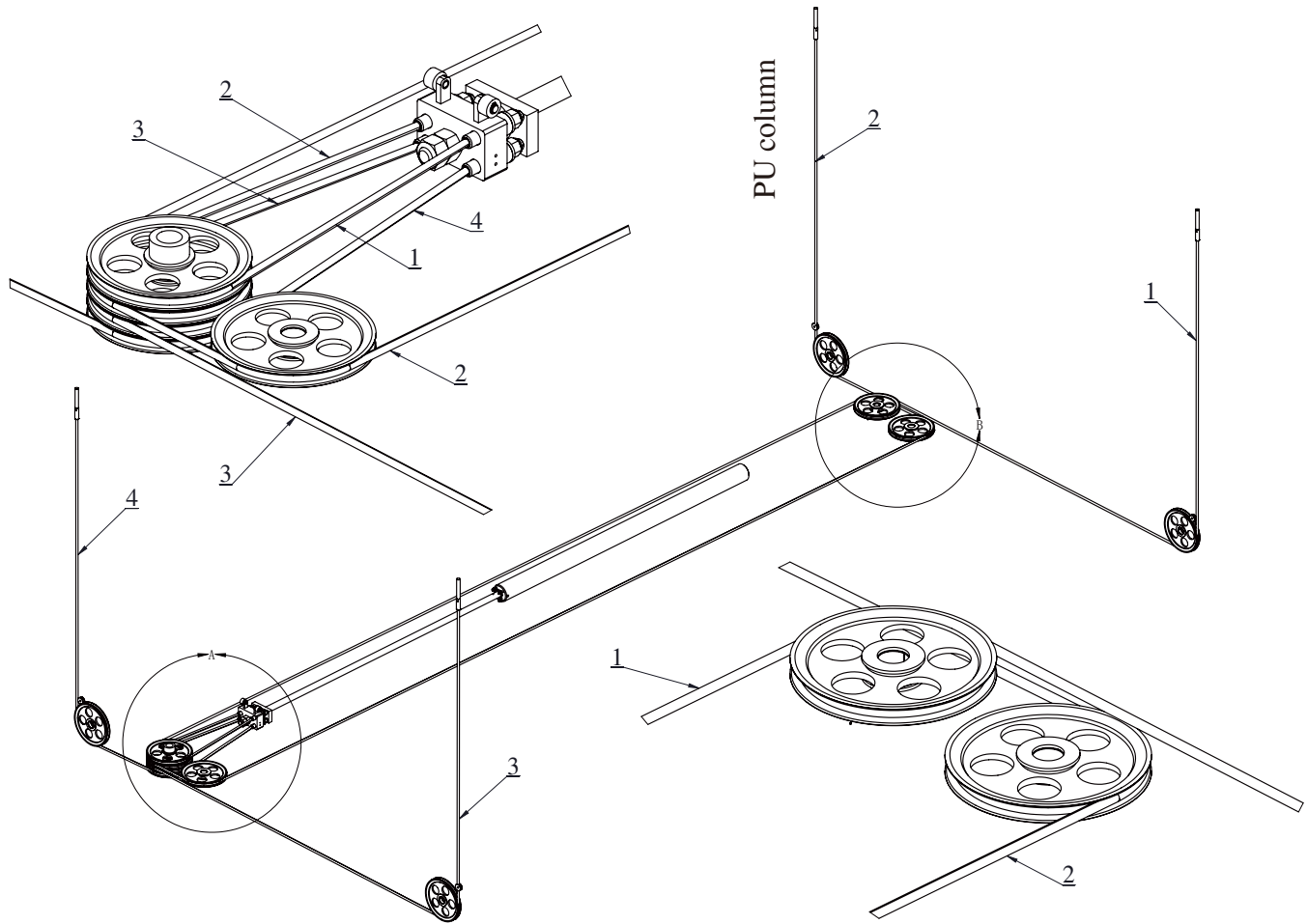
Detail for PB-SM65-9

	PartNo.	Description	Qty
1.1	SM65-60-1400ZP	PU crossbeam assembly for SM65	1
	SM65-60-1400	PU crossbeam weldment for SM65	
1.2	SM65-60-1600ZP	PU crossbeam assembly for SM55LT	1
	SM65-60-1600	PU crossbeam weldment for SM55LT	
2	SM65-60-1500ZP	Vice crossbeam assembly for SM65/55LT	1
	SM65-60-1500	Vice crossbeam weldment for SM65/55LT	
3	460440	Plastic plug	8
4	FC5985Y	Plastic cover	4
5	B24-8*12	Cross recessed pan head screw M8*12	16
6	FC622Y	Slider block	8
7	B85-6	Oil cup M6	4
8	S130286Y	Spacer	8
9	SM65-60-1013	Sheave with bearing	4
10	SM65-60-1402	Sheave pin	4
11	H4P-3006	Lock plate	4
12	B40-10	Spring washer $\phi 10$	8
13	B10-10*16	Hexagon bolt M10*16	8
14	BMW-2300G	Adjustment bolt	4
15	FC522-25Y	Spring	8
16	S110435Y	Kicker assembly	4
16.1	S121272Y	Kicker weldment	4
16.2	FC553-21Y	Roll sleeve	4
16.3	B60-9	Circlips for shaft $\phi 9$	4
17	B52-4*40	Cotter pin 4*40	8
18	B52-2*20	Cotter pin 2*20	8
19	FC5993Y	U plate	4
20	S130061	Air cylinder	4
21	40622	Nut 1/4"-28NF	8
22	S130287Y	Pin	8
23	FC5901-7Y	Shaft	4
24	FC5986Y	Locking latch	4
25	B41-20	Flat washer $\phi 20$	8
26	B41-6	Flat washer $\phi 6$	4



Detail for PB-SM65-10			
	PartNo.	Description	Qty
1	SM65-60-1008	Support plate	1
2	SM65-60-1109	Connect plate (Only for SM65-60/55)	1
3	SM65-60-1015	Cover plate	2
4	B11-10*35	Hexagon bolt M10*35 8.8 grade (Only for SM65-60/55)	4
5	B10-10*25	Hexagon bolt M10*25	2
6	B40-10	Spring washer φ10	18
7	B41-10	Flat washer φ10	10
8	B10-10*20	Hexagon bolt M10*20	8
9	H4P-3006	Lock plate	4
10	B20-8*16	Hexagon socket cap screw M8*16	6
11	B40-8	Spring washer φ8	6
12	B41-8	Flat washer φ8	6
13	SM65-60-1013	Sheave with bearing	7
14	S130246Y	Spacer	11
15	SM65-60-1003	Spacer(37mm)	1
16	SM65-60-1004	Spacer(81.4mm)	1
17	SM65-60-1002	Spacer(110.4mm)	1
18	SM65-60-1014	Spacer(8mm)	2
19	SM65-60-1001	Spacer(31.8mm)	1
20	SM65-60-1005	Spacer(59.2mm)	2
21	SM65-60-1012	Sheave pin	1
22	SM65-60-1011	Sheave pin	1
23	SM65-60-1009	Sheave pin	1
24	SM65-60-1010	Sheave pin	1
25	B85-6	Oil cup M6	4
26	SM65-60-1113	Support plate for drag chain	1
27	B92-25*2280	drag chain	1
28	B20-5*12	Hexagon socket cap screw M5*12	4
29	B41-5	Flat washer φ5	8
30	B23-4*8	Cross recess pan head screw M4*8	2
31	B30-30*1.5	Nut M30*1.5	2
32	SM55LT-51-1002G	Switch support plate	1

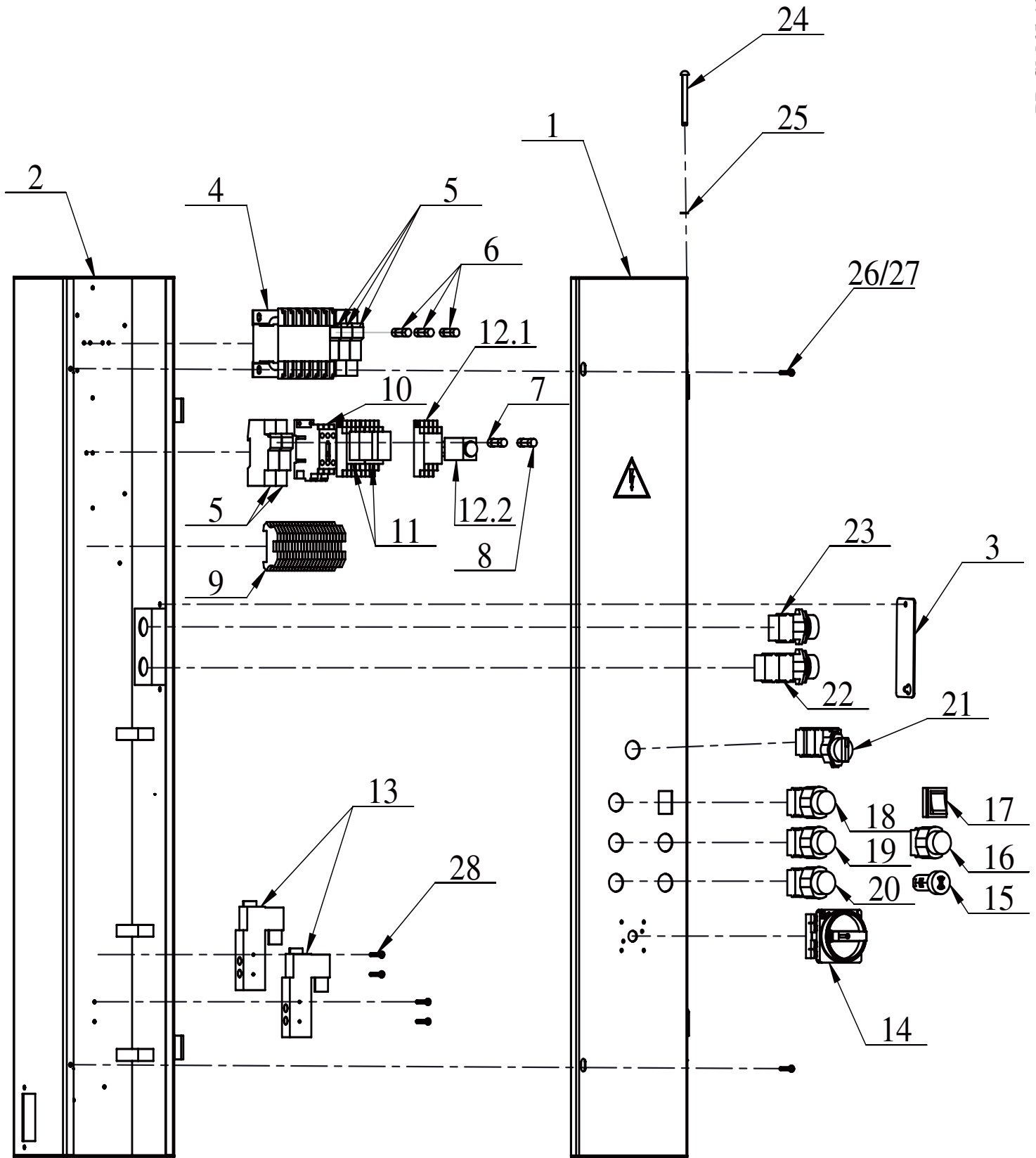
33	TZ-7166	Limit switch	2
34	PV4-3030	Aquare bar	1
35	B23-4*30	Cross recess pan head screw M4*30	4
36	SM60-1122	Roller	4
37	B60-14	Snap ring $\phi 14$	2
38	B20-5*12	Hexagon socket cap screw M5*12	2
39	B40-5	Spring washer $\phi 5$	2
40	SM65-60-1006	Cable support bar weldment	1
41	B51-6*70	Spring-type straight pin 6*70	2
42	SM60-1129	Cable lock ring	4
43	SM60-1128	Spring	4
44	SM60-1130	Cable lock ring	4
45	B33-18	Nylon lock nut M18	4
46	SM60-1125	Piston slider	1
47	SM60-1127	Spring	1
48	SM65-60-1116	Lock ring	1
49	B21-6*10	Hexagon socket screw with flat point M6*10	1
50	B20-10*35	Hexagon socket cap screw M10*35	4
51	SM65-9100	Hydraulic cylinder	1



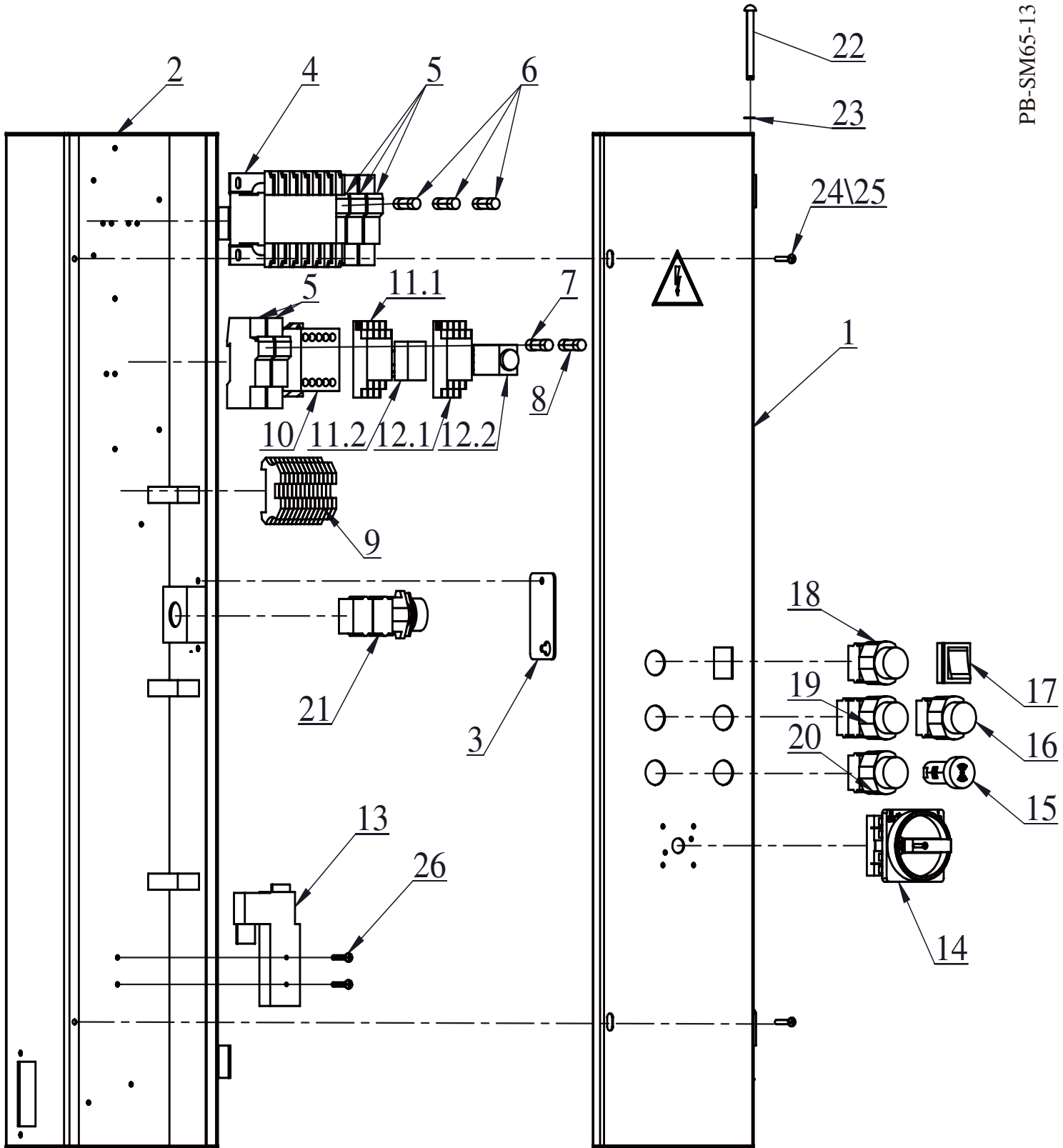
PB-SM65-11

Detail for PB-SM65-11

	PartNo.	Description	Qty
SM65-60			
1	SM65-60-1016-1	Cable(11640mm)	1
2	SM65-60-1016-2	Cable (10355mm)	1
3	SM65-60-1016-4	Cable (5598mm)	1
4	SM65-60-1016-3	Cable (3780mm)	1
SM65-55			
1	SM65-60-1016-5	Cable (11140mm)	1
2	SM65-60-1016-6	Cable (9855mm)	1
3	SM65-60-1016-4	Cable (5598mm)	1
4	SM65-60-1016-3	Cable (3780mm)	1
SM65-51			
1	SM65-60-1016-7	Cable (10740mm)	1
2	SM65-60-1016-8	Cable (9455mm)	1
3	SM65-60-1016-4	Cable (5598mm)	1
4	SM65-60-1016-3	Cable (3780mm)	1
SM55LT-51			
1	SM65-60-1016-11	Cable(10460mm)	1
2	SM65-60-1016-12	Cable(9190mm)	1
3	SM65-60-1016-10	Cable(5318mm)	1
4	SM65-60-1016-9	Cable(3498mm)	1

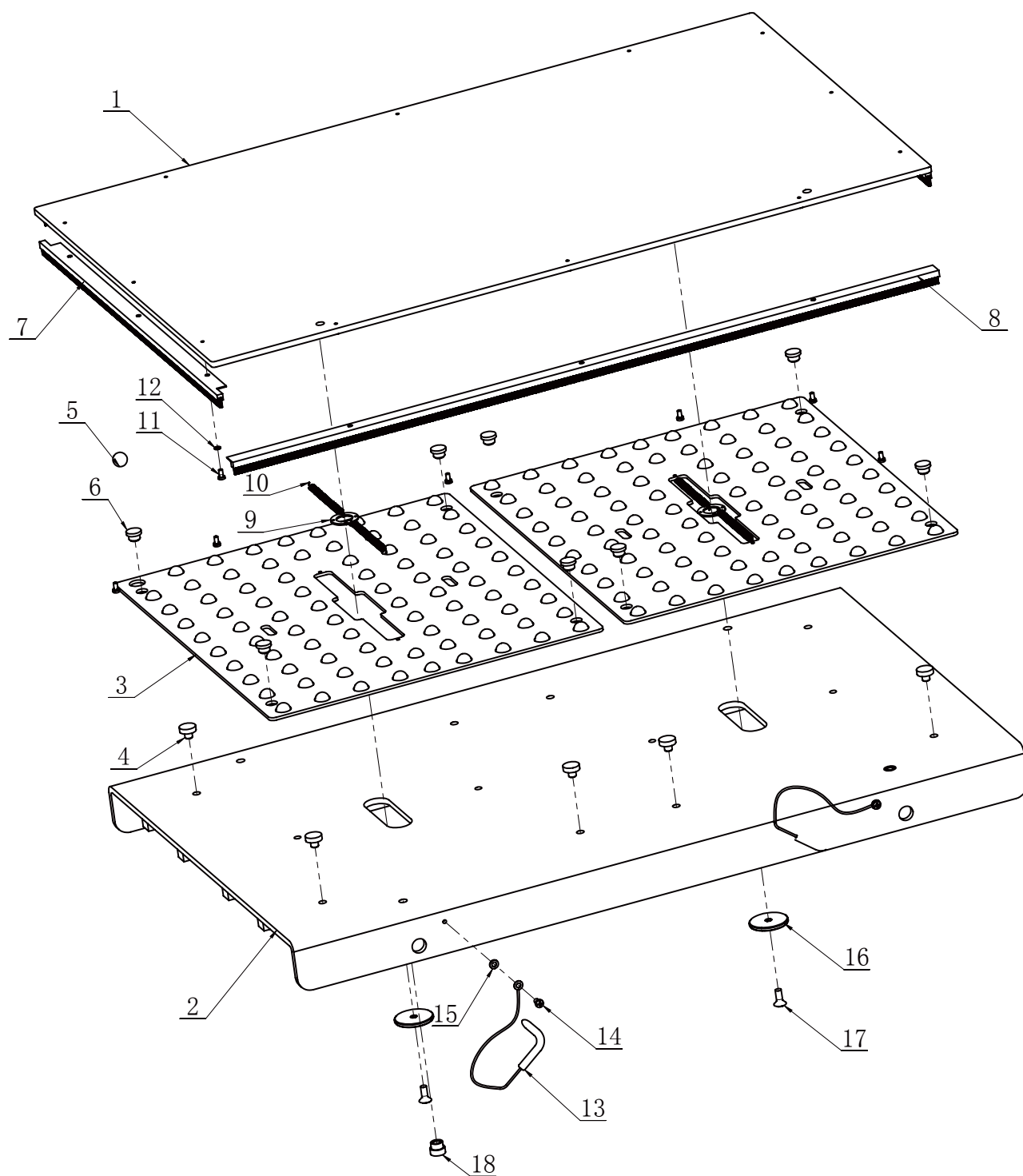


Detail for PB-SM65-12(MOT40-1400B)			
	PartNo.	Description	Qty
1	MOT40-1416	Control box cover weldment	1
2	MOT40-1411	Control box button weldment	1
3	PV4-1032	Cover plate	1
4	JBK3-400/230V/24V	Voltage changer	1
5	LS501	Fuse base	5
6	RT18-16	Fuse(16A)	3
7	RT18-2	Fuse(2A) left	1
8	RT18-6	Fuse(6A) right	1
9	DK2.5-22/NSM40LT	Terminals component	1
10.1	XTCG012B00B5	Contactor	1
10.2	XTCGXFAC11	Additional contact	1
11.1	FS4COECO	Intermediate relay base	2
11.2	DRM570524LT	Intermediate relay	2
12.1	RXZE1M2C	Time Relay base	1
12.2	RXL2TMB7	Time Relay	1
13	3V210-06AC24V	Exchange valve	2
14	ER254B 4P	Power switch	1
15	AD16-22SM/R	Buzzer	1
16	LA39-A2-12/G	Down to lock button	1
17	KCD1-201N/5A/250VAC	Light switch	1
18	LA39-A2-12/W	Upper button	1
19	LA39-A2-21/K	Down button	1
20	LA39-A2-20/K	Down button in danger zone	1
21	LA39-A2-32-X/K	Switch button	1
22	LA39-A2-30/R	Emergency button for help	1
23	LA39-A2-10/Y	oil supplementary button	1
24	PV4-1036	Hinge B	2
25	B60-7	Snap ring $\phi 7$	2
26	B23-5*30	Cross recess head screw M5*30	2
27	B30-5	Nut M5	4
28	B23-4*30	Cross recess head screw M4*30	4



Electrical control box for SM65-60/55/51

Detail for PB-SM65-13(MOT40-1400)			
	PartNo.	Description	Qty
1	MOT40-1406	Control box cover weldment	1
2	MOT40-1401	Control box button weldment	1
3	SM40BMW-47-3213	Cover plate	1
4	JBK3-400/230V/24V	Voltage changer	1
5	LS501	Fuse base	5
6	RT18-16	Fuse(16A)	3
7	RT18-2	Fuse(2A) left	1
8	RT18-6	Fuse(6A) right	1
9	DK2.5-14/bmw	Terminals component	1
10	AS16-30-01-20	Contactor	1
11.1	FS4COECO	Intermediate relay base	1
11.2	DRM570524LT	Intermediate relay	1
12.1	RXZE1M2C	Time Relay base	1
12.2	RXL2TMB7	Time Relay	1
13	3V210-06AC24V	Exchange valve	2
14	ER254B 4P	Power switch	1
15	AD16-22SM/R	Buzzer	1
16	LA39-A2-10/G	Down to lock button	1
17	KCD1-201N/5A/250VAC	Light switch	1
18	LA39-A2-21/W	Upper button	1
19	LA39-A2-31/K	Down button	1
20	LA39-A2-20/K	Down button in danger zone	1
21	LA39-A2-30/R	Emergency button	1
22	PV4-1036	Hinge B	2
23	B60-7	Snap ring $\phi 7$	2
24	B23-5*30	Cross recess head screw M5*30	2
25	B30-5	Nut M5	4
26	B23-4*30	Cross recess head screw M4*30	2



Sliding plate assembly for SM65/SM55LT Lift

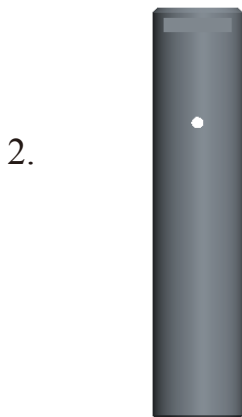
Detail for PB-SM65-14(SM65-2000G)			
Item	PartNo.	Description	Qty
1	SM65-2100G	Weldment ,upper sliding plate	1
2	SM65-2200G	Weldment ,down sliding plate	1
3	SM65-2001G	Rear slip plate ball retainer	2
4	SM65-2002	Nylon bolt	8
5	FC5190-7	Plastic ball ϕ 19.05	168
6	SM60-1521-1	Nylon bolt	8
7	SM65-2006G	Dustproof brush	2
8	SM65-2005G	Dustproof brush	2
9	SM60-1522	Spring Support Ring	2
10	NH4D-1011	Spring	4
11	B23-5*10	Cross recessed pan head M5*10	12
12	B40-5	Spring washer ϕ 5	12
13	H4P-7500	Fixed pin	2
14	B23-6*10	Cross recessed pan headM6*10	2
15	B41-6	Flat washer ϕ 6	2
16	SM65-2003	Nylon disk	2
17	B26-8*25	Hexagon socket countersunk head screwsM8*16	2
18	SM65-2007	Guide sleeve	2

V . Spare Parts List

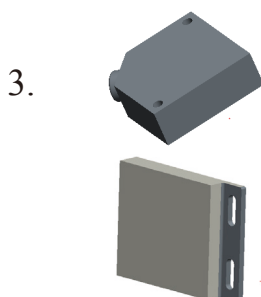
For SM65-60/55/51,SM55LT-51



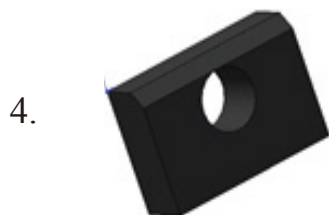
Part.No	Description	Qty	Dim
SM65-60-1013	Sheave with bearing	11	Φ222*22
See PB-SM65-9/10,For SM65/SM55LT-51			



Part.No	Description	Qty	Dim
SM65-60-1402	Sheave pin for crossbeam	4	Φ40*102
SM65-60-1009	Sheave pin for runway	1	Φ40*180
SM65-60-1010	Sheave pin for runway	1	Φ40*180
SM65-60-1011	Sheave pin for runway	1	Φ40*180
SM65-60-1012	Sheave pin for runway	1	Φ40*180
See PB-SM65-9/10,For SM65/SM55LT-51			



Part.No	Description	Qty
LRK-5050-115	Optoelectronic switch kit	1
LRK-5050-115-1	Optoelectronic switch	1
LRK-5050-115-2	Switch reflector	1
See PB-SM65-6,For SM55LT-51		

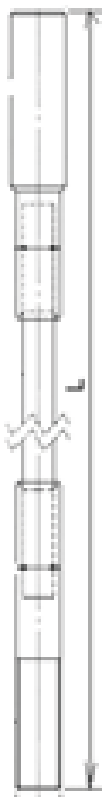


Part.No	Description	Qty
SM55LT-51-1005	Slider block on lifting table	8
See PB-SM65-6,For SM55LT-51		



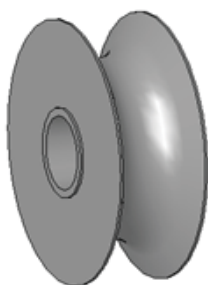
Part.No	Description	Qty
CJPB-15*10	Air cylinder on lifting table	2
See PB-SM65-6,For SM55LT-51		

6.



Part.No.	Description	Qty	Dim
For SM65-60			
SM65-60-1016-1	Cable	1	11640mm
SM65-60-1016-2	Cable	1	10355mm
SM65-60-1016-3	Cable	1	3780mm
SM65-60-1016-4	Cable	1	5598mm
For SM65-55			
SM65-60-1016-5	Cable	1	11140mm
SM65-60-1016-6	Cable	1	9855mm
SM65-60-1016-3	Cable	1	3780mm
SM65-60-1016-4	Cable	1	5598mm
For SM65-51			
SM65-60-1016-7	Cable	1	10740mm
SM65-60-1016-8	Cable	1	9455mm
SM65-60-1016-3	Cable	1	3780mm
SM65-60-1016-4	Cable	1	5598mm
For SM55LT-51			
SM65-60-1016-9	Cable	1	3498mm
SM65-60-1016-10	Cable	1	5318mm
SM65-60-1016-11	Cable	1	10460mm
SM65-60-1016-12	Cable	1	9190mm
See PB-SM65-11			

7.



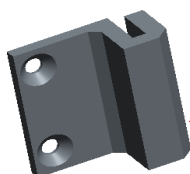
Part.No	Description	Qty
FC553-21Y	Nylon wheel for guiding cable	4
See PB-SM65-9,For SM65/SM55LT		

8.



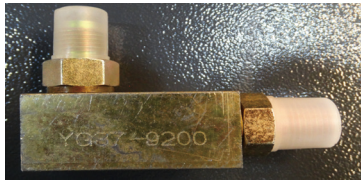
Part.No	Description	Qty
S130061Y	Air cylinder for crossbeam	4
See PB-SM65-9,For SM65/SM55LT		

9.



Part.No	Description	Qty
FC5706-16Y	Slider block for yoke end	8
See PB-SM65-9,For SM65/SM55LT		

10.



Part.No	Description	Qty
SM60-9200	Throttle valve	1
For SM65 main cylinder		

11.



Part.No	Description	Qty
IFC-6T-10	Flow restricted valve	1
I12-9802-2.1	Valve block	1
SM55-9802-1	Fitting	1
SVW6353-9802-1	Fitting	1
For SM55LT main cylinder		

12.



Part.No	Description	Qty
SM60-1128	Spring on cable end	4
See PB-SM65-10,For SM65/SM55LT		

13.



Part.No	Description	Qty
SM60-1125	Nylon block on cable end	1
See PB-SM65-10 ,For SM65/SM55LT		

14.



Part.No	Description	Qty
Fc522-25Y	Spring on yoke end	8
See PB-SM65-9,For SM65/SM55LT		

15.



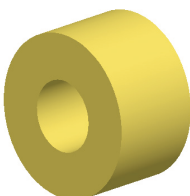
Part.No	Description	Qty
S130246Y	Washer between sheaves	11
See PB-SM65-10,For SM65/SM55LT		

16.



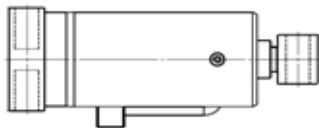
Part.No	Description	Qty	Remark
SM65-9100	Cylinder for main lift	1	Stroke=1802
See PB-SM65-10,For SM65/SM55LT			

17.



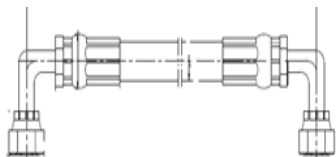
Part.No	Description	Qty
SM60-1122	Roller on the cable end	2
See PB-SM65-10 For SM65/SM55LT		

18.



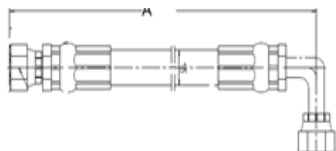
Part.No	Description	Qty	Remark
R520-ZY1	Cylinder	1	ODΦ125 for lifting table
R520-ZY2	Cylinder	1	ODΦ115 for lifting table
See PB-SM65-6, For SM55LT lifting table			

19.



Part.No	Description	Qty	Remark
SM50-9801-2	Hose for lifting table	1	A=3630
SM50-9801-3	Hose for lifting table	1	A=2000
SM50-9801-4	Hose for lifting table	1	A=4500
For SM55LT			

20.



Part.No	Description	Qty	Remark
SM65-9801-4	Hose for main lift	1	A=5300(-51 lift)
SM65-9801-3	Hose for main lift	1	A=5700(-55 lift)
SM65-9801-2	Hose for main lift	1	A=6200(-60 lift)
SM50-9801-1	Hose for main lift	1	A=5570(-55LT)
SM50-9801-5	Hose for lifting table	1	A=1900(-55LT)
For SM65-60/55/51, SM55LT			

21.

Part.No	Description	Qty	Remark
BZSM65-60-06	package for install	1	
Bolts for installing the Power unit and runway			

22.

Part.No	Description	Qty	Remark
BZMOT40-14	package for install SM65-60/55/51	1	
BZMOT40-15	Package for install SM55LT-51	1	
Air maintenance and hydraulic fitting for connecting to PU			

Other hydraulic components

Part.No	Description	Qty	Remark
SM65-9180	Seal kit for main cylinder	1	
R520-ZY1-9180	Seal kit for lifting table cylinder	1	
R520-ZY2--9180	Seal kit for lifting table cylinder	1	

ATTACHMENT

Four column lifting platform

SM65-60

SM65-55

SM65-51

SM55LT-51

Maintenance schedule:

Notes for execution of the visual and
functional testing

Notes for execution of the visual and functional testing

In the scope of periodical inspections, the followings must be checked in particular:

1. Information on the lifting platform	Object to be checked
Nameplate Labeling Summary of the manual	Fastening Readability Completeness
2.Detailed operating instructions	Condition Readability
3.Warnings	Condition Noticeability
4. Protection against unauthorized use	Condition Function Mobility Safety key
5. Actuators	
Lifting, lowering Tilting, tipping Turning, pivoting Switching Opening and closing (of the loading tailgate) Driving Supports	Condition Function Mobility Clear assignment Permanent labeling of the direction of movement Protection against unintentional actuation Locking mechanism of the actuators with multiple controls
6. Emergency shutdown, Emergency drainage	Condition Function Mobility
7. Signalling devices, devices for communication	Condition Function Noticeability Reliability
8. Devices for the stable installation	
Spirit level Supports Spindles Bottom pan Elimination of the spring travel	Condition Function Mobility Wear Deformation Corrosion Cracks
9. Supporting structure	Cracks Deformation Corrosion Mobility of guides, pulleys, hinges, telescopes, Wear of guides, pulleys, hinges, fastening and securing of removable parts Effectiveness of locking mechanisms

10. Load suspension devices	
Protection against sliding Roll-off protection Holding device Protection of the hinged bracket	Condition Function
Safety fence	Condition Corrosion Fastening and securing of removable parts Effectiveness of locking mechanisms Mobility of movable parts
Ground	Surefootedness Deformation Corrosion Fastening and securing of removable parts
Parallel motion on operating platforms	Condition Function Wear Cracks Corrosion
Stowable operating platform	Condition and effectiveness of the locking mechanism
Stairs	Surefootedness Deformation Corrosion Damage Fastening and securing of removable parts Welded connections
11. Steel wire rope Cable connections	Wear Corrosion Wire breakages Wire break nests Pinch points Loosening of the outer layer Bird-caging
Sheaves and pulleys	Cracks Signs of wear Burr formation in the groove Correct aligning of the groove
Rope winding Clamping device Securing at rope bearings Protection against coming off of the rope	Condition Function
12. Steel link chains, chain linkings	Mobility Wear Cracks Securing of the studs, e.g. by rivet head, ring

Chain wheels Sprockets	Condition Function
Clamping device Securing of the chain guide	Condition Function
13. Spindles	Storage Deformation Contamination Wear of the threads Notches Striations Grooves, applications Efficiency of the covering
Main nut	Wear of the thread (play)
Compensation ring	Bearing Condition Notches Striations
14. Racks	Fastening Wear Contamination Joints of jointed racks
Pinions	Cracks Wear Contamination Fastening and play of the spindle
15. Hydraulics	Leakage Leak test Venting
Oil reservoir	Condition and readability of the display Control of the oil quantity Efficiency of the shut-off device in case of lack of oil
Lines Line connections	Fastening Damages Deformation Corrosion
Hoses Hose connections	Fastening Damage Age Brittleness Porosity
Cylinders	Fastening Cracks Pipe connections and hose connections Tightness of the sleeves
Pistons	Surface of the piston rod Striations Contamination

Filters	External condition
Pressure control valve	External condition Lead seal undamaged
16. Pneumatics	
Lines Line connections	Leakage Fastening Damage Deformation Corrosion
Hoses Hose connections	Fastening Damage Age Brittleness Porosity
Cylinders	Fastening, cracks, pipe connections and hose connections Tightness of the sleeves
Pistons	Surface of the piston rod, striations, contamination
Relief valve	External condition, lead seal undamaged
Gauge, pressure reducer	External condition and effectiveness
17. Driving mechanisms (without bogie)	Connections of parts of the driving mechanism shock-free starting
Brakes, self-locking gearbox, couplings	Wear, effectiveness
18. Driving carriage, bogie	
Service brakes, emergency brakes	Wear, effectiveness
Drawbar protection	Condition, effectiveness
Positive guide, guide rail Rail joints, end stops, cow-catcher Protection against derailling	Deformation, cracks, condition of the fastening
19. Points of access and points of loading	Surefootedness, deformation of handrails, damage Corrosion, securing of removable parts
20. Electrical equipment	
Lines	Damage, fastening, strain relief of external lines
Protective earth	Damage, fastening
21. Insulation on aerial work platforms, as far as the aerial work platform is intended for work on or near unprotected, live parts of electrical installations	
Insulation work platform/lifting equipment as well as lifting equipment/driving carriage	Contamination, damage, insulation resistance
22. Special safety devices	
Emergency limit switch, slack rope switch, rope break switch, chain fracture switch, control locks, switch-off strips, restart protection, anti-tipping device (for stowable work platforms), safety catch, completeness	Effectiveness, fastening, condition Deformation, effectiveness of the switch elements, contamination, condition of pressure springs

These notes do not claim to be complete, and they must be matched to the lifting platforms to be examined.

ATTACHMENT

Four column lifting platforms
Inspection log

Inspection log for lifting platforms

Type: _____

Serial number: _____

Year of construction: _____

Operator: _____

Day of first commissioning: _____

BlitzRotary GmbH
Hüfinger Straße 55
D-78199 Bräunlingen



Telephone +49.771.9233.0
Fax +49.771.9233.99
europe@rotarylif.com
www.rotarylif.com

Test Report

Of the examination before the first commissioning by technical expert / surveyor
The lifting platform underwent an examination regarding operational readiness on _____

The following/no*) faults found.

Test scope _____

Still pending _____

Partial tests

There are no*) reasons against continued operation, retesting is not*) required.

The technical expert/surveyor

(Place ,date)

(Signature)

Name and address

(in block letters) _____

Job title _____

Employed at _____

Operator or Representative

Deficiencies noted

(Place ,date)

(Signature)

Deficiencies fixed

(Place ,date)

(Signature)

Retesting

The lifting platform underwent retesting on _____

The deficiencies which were pointed out in the examination have not*) been fixed yet.

There are no*) reasons against continued operation, retesting is not*) required.

The technical expert/surveyor

(Place ,date)

(Signature)

Name

and

address

(in block letters) _____

Job title _____

Employed at _____

Test Report

Of the examination before the first commissioning by technical expert / surveyor
The lifting platform underwent an examination regarding operational readiness on _____

The following/no*) faults found.

Test scope _____

Still pending _____

Partial tests _____

There are no*) reasons against continued operation, retesting is not*) required.

The technical expert/surveyor

(Place ,date)

(Signature)

Name and address

(in block letters) _____

Job title _____

Employed at _____

Operator or Representative

Deficiencies noted

(Place ,date)

(Signature)

Deficiencies fixed

(Place ,date)

(Signature)

Retesting

The lifting platform underwent retesting on _____

The deficiencies which were pointed out in the examination have not*) been fixed yet.

There are no*) reasons against continued operation, retesting is not*) required.

The technical expert/surveyor

(Place ,date)

(Signature)

Name

and

address

(in block letters) _____

Job title _____

Employed at _____

Test Report

Of the examination before the first commissioning by technical expert / surveyor
The lifting platform underwent an examination regarding operational readiness on _____

The following/no*) faults found.

Test scope _____

Still pending _____

Partial tests

There are no*) reasons against continued operation, retesting is not*) required.

The technical expert/surveyor

(Place ,date)

(Signature)

Name and address
(in block letters) _____

Job title _____

Employed at _____

Operator or Representative

Deficiencies noted

(Place ,date)

(Signature)

Deficiencies fixed

(Place ,date)

(Signature)

Retesting

The lifting platform underwent retesting on _____

The deficiencies which were pointed out in the examination have not*) been fixed yet.

There are no*) reasons against continued operation, retesting is not*) required.

The technical expert/surveyor

(Place ,date)

(Signature)

Name

and

address

(in block letters) _____

Job title _____

Employed at _____

Test Report

Of the examination before the first commissioning by technical expert / surveyor
The lifting platform underwent an examination regarding operational readiness on _____

The following/no*) faults found.

Test scope _____

Still pending _____

Partial tests _____

There are no*) reasons against continued operation, retesting is not*) required.

The technical expert/surveyor

(Place ,date)

(Signature)

Name and address
(in block letters) _____

Job title _____

Employed at _____

Operator or Representative

Deficiencies noted

(Place ,date)

(Signature)

Deficiencies fixed

(Place ,date)

(Signature)

Retesting

The lifting platform underwent retesting on _____

The deficiencies which were pointed out in the examination have not*) been fixed yet.

There are no*) reasons against continued operation, retesting is not*) required.

The technical expert/surveyor

(Place ,date)

(Signature)

Name

and

address

(in block letters) _____

Job title _____

Employed at _____

Test Report

Of the examination before the first commissioning by technical expert / surveyor
The lifting platform underwent an examination regarding operational readiness on _____

The following/no*) faults found.

Test scope _____

Still pending _____

Partial tests

There are no*) reasons against continued operation, retesting is not*) required.

The technical expert/surveyor

(Place ,date)

(Signature)

Name and address
(in block letters) _____

Job title _____

Employed at _____

Operator or Representative

Deficiencies noted

(Place ,date)

(Signature)

Deficiencies fixed

(Place ,date)

(Signature)

Retesting

The lifting platform underwent retesting on _____

The deficiencies which were pointed out in the examination have not*) been fixed yet.

There are no*) reasons against continued operation, retesting is not*) required.

The technical expert/surveyor

(Place ,date)

(Signature)

Name

and

address

(in block letters) _____

Job title _____

Employed at _____

Test Report

Of the examination before the first commissioning by technical expert / survey or
The lifting platform underwent an examination regarding operational readiness on _____

The following/no*) faults found.

Test scope _____

Still pending _____

Partial tests

There are no*) reasons against continued operation, retesting is not*) required.

The technical expert/surveyor

(Place ,date)

(Signature)

Name and address

(in block letters) _____

Job title _____

Employed at _____

Operator or Representative

Deficiencies noted

(Place ,date)

(Signature)

Deficiencies fixed

(Place ,date)

(Signature)

Retesting

The lifting platform underwent retesting on _____

The deficiencies which were pointed out in the examination have not*) been fixed yet.

There are no*) reasons against continued operation, retesting is not*) required.

The technical expert/surveyor

(Place ,date)

(Signature)

Name

and

address

(in block letters) _____

Job title _____

Employed at _____

Test Report

Of the examination before the first commissioning by technical expert / surveyor
The lifting platform underwent an examination regarding operational readiness on _____

The following/no*) faults found.

Test scope _____

Still pending _____

Partial tests _____

There are no*) reasons against continued operation, retesting is not*) required.

The technical expert/surveyor

(Place ,date)

(Signature)

Name and address

(in block letters) _____

Job title _____

Employed at _____

Operator or Representative

Deficiencies noted

(Place ,date)

(Signature)

Deficiencies fixed

(Place ,date)

(Signature)

Retesting

The lifting platform underwent retesting on _____

The deficiencies which were pointed out in the examination have not*) been fixed yet.

There are no*) reasons against continued operation, retesting is not*) required.

The technical expert/surveyor

(Place ,date)

(Signature)

Name

and

address

(in block letters) _____

Job title _____

Employed at _____

Test Report

Of the examination before the first commissioning by technical expert / surveyor
The lifting platform underwent an examination regarding operational readiness on _____

The following/no*) faults found.

Test scope _____

Still pending _____

Partial tests

There are no*) reasons against continued operation, retesting is not*) required.

The technical expert/surveyor

(Place ,date)

(Signature)

Name and address

(in block letters) _____

Job title _____

Employed at _____

Operator or Representative

Deficiencies noted

(Place ,date)

(Signature)

Deficiencies fixed

(Place ,date)

(Signature)

Retesting

The lifting platform underwent retesting on _____

The deficiencies which were pointed out in the examination have not*) been fixed yet.

There are no*) reasons against continued operation, retesting is not*) required.

The technical expert/surveyor

(Place ,date)

(Signature)

Name

and

address

(in block letters) _____

Job title _____

Employed at _____

Test Report

Of the examination before the first commissioning by technical expert / surveyor
The lifting platform underwent an examination regarding operational readiness on _____

The following/no*) faults found.

Test scope _____

Still pending _____

Partial tests

There are no*) reasons against continued operation, retesting is not*) required.

The technical expert/surveyor

(Place ,date)

(Signature)

Name and address

(in block letters) _____

Job title _____

Employed at _____

Operator or Representative

Deficiencies noted

(Place ,date)

(Signature)

Deficiencies fixed

(Place ,date)

(Signature)

Retesting

The lifting platform underwent retesting on _____

The deficiencies which were pointed out in the examination have not*) been fixed yet.

There are no*) reasons against continued operation, retesting is not*) required.

The technical expert/surveyor

(Place ,date)

(Signature)

Name

and

address

(in block letters) _____

Job title _____

Employed at _____

Test Report

Of the examination before the first commissioning by technical expert / survey or
The lifting platform underwent an examination regarding operational readiness on _____

The following/no*) faults found.

Test scope _____

Still pending _____

Partial tests _____

There are no*) reasons against continued operation, retesting is not*) required.

The technical expert/surveyor

(Place ,date)

(Signature)

Name and address
(in block letters) _____

Job title _____

Employed at _____

Operator or Representative

Deficiencies noted

(Place ,date)

(Signature)

Deficiencies fixed

(Place ,date)

(Signature)

Retesting

The lifting platform underwent retesting on _____

The deficiencies which were pointed out in the examination have not*) been fixed yet.

There are no*) reasons against continued operation, retesting is not*) required.

The technical expert/surveyor

(Place ,date)

(Signature)

Name _____ and _____ address
(in block letters) _____

Job title _____

Employed at _____

Test Report

Of the examination before the first commissioning by technical expert / surveyor
The lifting platform underwent an examination regarding operational readiness on _____

The following/no*) faults found.

Test scope _____

Still pending _____

Partial tests

There are no*) reasons against continued operation, retesting is not*) required.

The technical expert/surveyor

(Place ,date)

(Signature)

Name and address

(in block letters)

Job title

Employed at

Operator or Representative

Deficiencies noted

(Place ,date)

(Signature)

Deficiencies fixed

(Place ,date)

(Signature)

Retesting

The lifting platform underwent retesting on _____

The deficiencies which were pointed out in the examination have not*) been fixed yet.

There are no*) reasons against continued operation, retesting is not*) required.

The technical expert/surveyor

(Place ,date)

(Signature)

Name

and

address

(in block letters)

Job title

Employed at

Test Report

Of the examination before the first commissioning by technical expert / survey or

The lifting platform underwent an examination regarding operational readiness on _____

The following/no*) faults found.

Test scope _____

Still pending _____

Partial tests

There are no*) reasons against continued operation, retesting is not*) required.

The technical expert/surveyor

(Place ,date)

(Signature)

Name and address

(in block letters) _____

Job title _____

Employed at _____

Operator or Representative

Deficiencies noted

(Place ,date)

(Signature)

Deficiencies fixed

(Place ,date)

(Signature)

Retesting

The lifting platform underwent retesting on _____

The deficiencies which were pointed out in the examination have not*) been fixed yet.

There are no*) reasons against continued operation, retesting is not*) required.

The technical expert/surveyor

(Place ,date)

(Signature)

Name

and

address

(in block letters) _____

Job title _____

Employed at _____

Alterations and substantial

repairs

Type

Date/Name

[illegible]

--

**Contact Your Nearest Authorized Rotary Parts Distributor
For Genuine Rotary Replacement Parts.
Please see the parts breakdown.**

DATE	REV.	CHANGE MADE
04-06-15	A	New annex manual for SM65/SM55LT Lift release
06-01-15	B	Updated for the lifting table ramp of SM55LT

BlitzRotary GmbH
Hüfinger Straße 55
D-78199 Bräunlingen



Tel +49.771.9233.0
Fax +49.771.9233.99
info@blitzrotary.com
www.blitzrotary.com

USA: +1.812.273.1622 (Headquarter)
Canada: +1.905.812.9920
United Kingdom: +44.178.747.7711
AustralAsia: +60.3.7660.0285

Latin America/Caribbean: +1.812.273.1622
Middle East/Northern Africa: +49.771.9233.0
Southern Africa: 1.812.273.1622
Brazil: +55.11.4534.1995

